

DAC31x1 单通道 14 位、12 位和 10 位 500MSPS 数模转换器

1 特性

- 单通道
- 分辨率
 - DAC3151: 10 位
 - DAC3161: 12 位
 - DAC3171: 14 位
- 最大采样率: 500MSPS
- 引脚兼容系列
- 输入接口:
 - 并行低压差分信令 (LVDS) 输入
 - 单或双 DDR 数据时钟
 - 内部先入先出 (FIFO)
- 芯片到芯片同步
- 功率耗散: 375mW
- 20MHz IF 时的频谱性能
 - SNR:
 - DAC3151: 62dBFS
 - DAC3161: 72dBFS
 - DAC3171: 76dBFS
 - SFDR:
 - DAC3151: 76dBc
 - DAC3161: 77dBc
 - DAC3171: 78dBc
- 电流源型数模转换器 (DAC)
- 合规范围: -0.5V 至 +1V
- 封装: 64 引脚 VQFN (9mm x 9mm)

2 应用

- 无线基础设施
 - PA 偏置, 包络跟踪, TX
- 雷达
- 软件定义的无线电
- 信号和波形发生器
- 电缆前端设备

3 说明

DAC3151、DAC3161 和 DAC3171 (DAC31x1) 为一系列单通道、500MSPS 数模转换器 (DAC)。该系列搭配使用位宽为 10 位、

12 位或 14 位的低压差分信令 (LVDS) 数字总线与输入先入先出 (FIFO)。此 14 位 DAC3171 还支持一个 DDR 7 位 LVDS 接口模式。为了实现精确的信号同步, FIFO 输入和输出指针可在多个器件上同步。DAC 输出为电流源, 合规范围为 -0.5V 至 +1V 并与 GND 端接。DAC31x1 与 DAC31x4 双通道 10 位、12 位和 14 位 500 MSPS 数模转换器兼容。

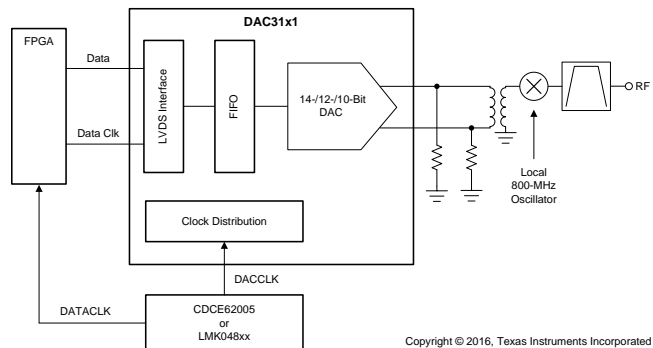
DAC31x1 采用 VQFN-64 封装, 可在 -40°C 至 85°C 的额定工业温度范围内运行。

器件信息⁽¹⁾

器件型号	封装	封装尺寸 (标称值)
DAC3151	VQFN (64)	9.00mm x 9.00mm
DAC3161		
DAC3171		

(1) 如需了解所有可用封装, 请参阅数据表末尾的封装选项附录。

DAC31x1 系统框图



目录

1	特性	1	7.4	Device Functional Modes	37
2	应用	1	7.5	Programming	38
3	说明	1	7.6	Register Map	38
4	修订历史记录	2	8	Application and Implementation	49
5	Pin Configuration and Functions	4	8.1	Application Information	49
6	Specifications	12	8.2	Typical Application	49
6.1	Absolute Maximum Ratings	12	9	Power Supply Recommendations	52
6.2	ESD Ratings	12	10	Layout	53
6.3	Recommended Operating Conditions	12	10.1	Layout Guidelines	53
6.4	Thermal Information	13	10.2	Layout Example	53
6.5	Electrical Characteristics: DC Specifications	13	11	器件和文档支持	54
6.6	Electrical Characteristics: AC Specifications	15	11.1	器件支持	54
6.7	Electrical Characteristics: Digital Specifications	15	11.2	相关链接	54
6.8	Timing Requirements	16	11.3	接收文档更新通知	54
6.9	Typical Characteristics	19	11.4	社区资源	54
7	Detailed Description	29	11.5	商标	54
7.1	Overview	29	11.6	静电放电警告	55
7.2	Functional Block Diagrams	30	11.7	Glossary	55
7.3	Feature Description	33	12	机械、封装和可订购信息	55

4 修订历史记录

注：之前版本的页码可能与当前版本有所不同。

Changes from Revision C (September 2016) to Revision D	Page
• Changed description for pins 1,2 from "and CLKVDD2" to "/ 2" in <i>Pin Functions: DAC3151</i> table	5
• Changed description for pins 1,2 from "and CLKVDD2" to "/ 2" in <i>Pin Functions: DAC3161</i> table	7
• Changed description for pins 1,2 from "and CLKVDD2" to "/ 2" in <i>Pin Functions: DAC3171 7-Bit Interface Mode</i>	9
• Changed description for pins 1,2 from "and CLKVDD2" to "/ 2" in <i>Pin Functions: DAC3171 14-Bit Interface Mode</i>	11
• Deleted all instances of sampling rates > 500 MSPS from Table 34	52
• Changed VDDDA33 to VDDA33 (typo) in Table 34	52
• Changed VDDA33 value from 0.9 V to 3.3 V in Table 34	52

Changes from Revision B (January 2016) to Revision C	Page
• Added last sentence to RESETB pin description in <i>Pin Functions: DAC3151</i> table	4
• Added last sentence to RESETB pin description in <i>Pin Functions: DAC3161</i> table	6
• Added last sentence to RESETB pin description in <i>Pin Functions: DAC3171 7-Bit Interface Mode</i> table	8
• Added last sentence to RESETB pin description in <i>Pin Functions: DAC3171 14-Bit Interface Mode</i> table	10
• Changed LVDS to LVPECL in ALIGNP, ALIGNN amplifier in Figure 66	30
• Changed LVDS to LVPECL in ALIGNP, ALIGNN amplifier in Figure 67	31
• Changed LVDS to LVPECL in ALIGNP, ALIGNN amplifier in Figure 68	32
• Added <i>Programming</i> section	38

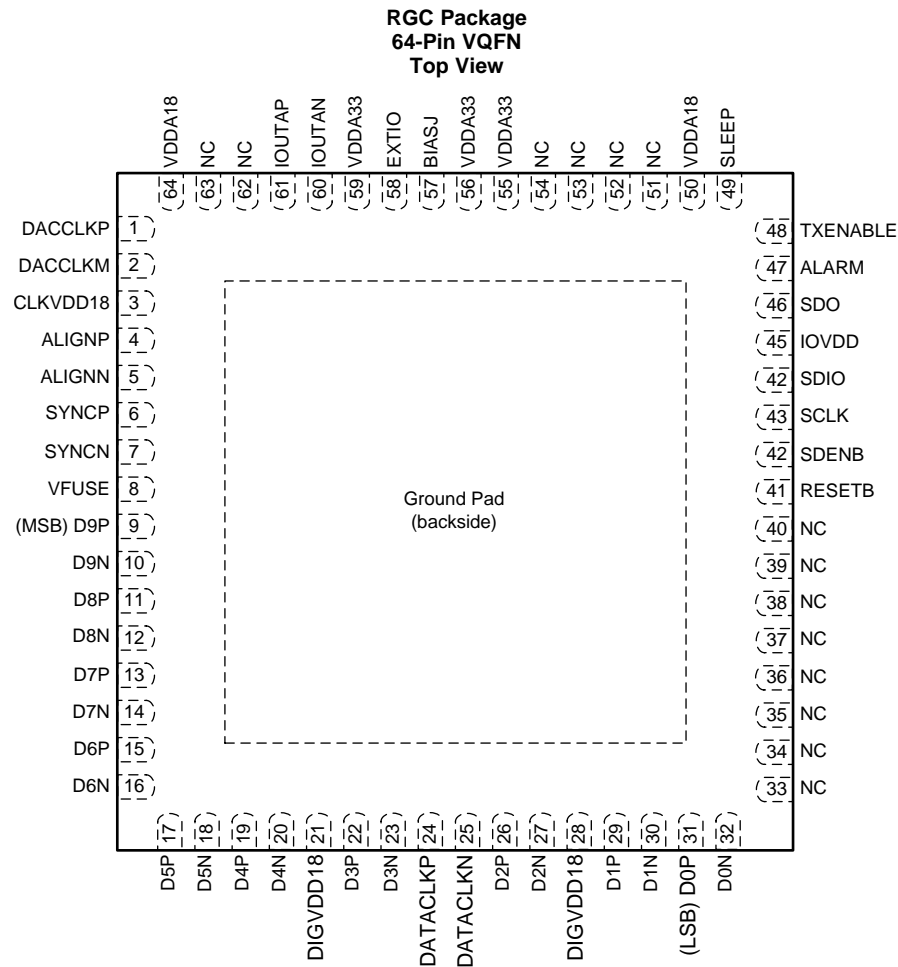
Changes from Revision A (August 2013) to Revision B
Page

• 已添加 ESD 额定值表、特性说明部分、器件功能模式、应用和实施部分、电源建议部分、布局部分、器件和文档支持部分以及机械、封装和可订购信息部分。	1
• 已添加 简化原理图	1
• Changed the register default values and added missing electrical characteristics for LVPECL signal	15
• Changed Figure 66	30
• Changed Figure 67	31
• Changed Figure 68	32
• Changed Figure 69	33

Changes from Original (August 2013) to Revision A
Page

• 已更改 从“产品预览”改为“生成数据”	1
-----------------------------	---

5 Pin Configuration and Functions

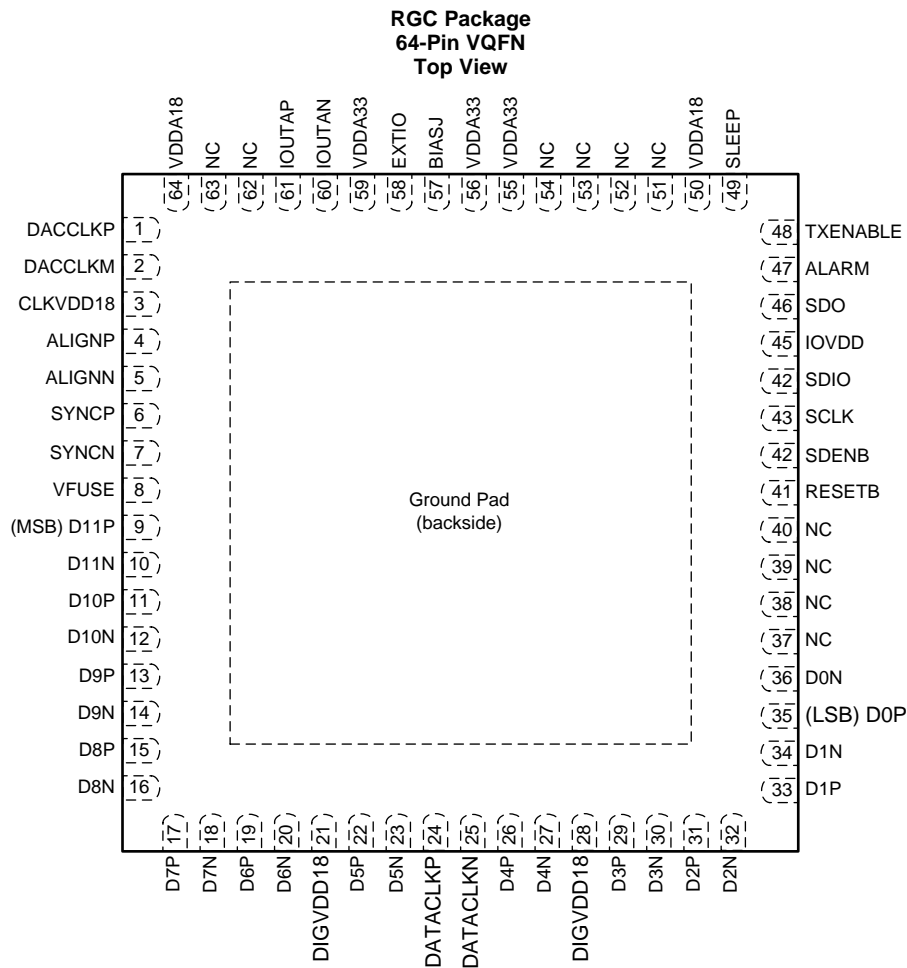


Pin Functions: DAC3151

PIN		I/O	DESCRIPTION
NAME	NO.		
CONTROL OR SERIAL			
SCLK	43	I	Serial interface clock. Internal pull-down.
SDENB	42	I	Serial data enable. Internal pullup.
SDIO	44	I/O	Bi-directional serial data in 3 pin mode (default). In 4-pin interface mode (register <code>sif4_ena</code> (config 0, bit 9)), the SDIO pin in an input only. Internal pull-down.
SDO	46	O	Uni-directional serial interface data in 4 pin mode (register <code>sif4_ena</code> (config 0, bit 9)). The SDO pin is tri-stated in 3-pin interface mode (default). Internal pull-down.
RESETB	41	I	Serial interface reset input. Active low. Initialized internal registers during high to low transition. Asynchronous. Internal pullup. A reset event after every power cycle may be needed to reinitialize all SPI registers to their default values.
ALARM	47	O	CMOS output for ALARM condition.
TXENABLE	48	I	Transmit enable active high input. TXENABLE must be high for the DATA to the DAC to be enabled. When TXENABLE is low, the digital logic section is forced to all 0, and any input data is ignored. Internal pull-down.
SLEEP	49	I	Puts device in sleep, active high. Internal pull-down.

Pin Functions: DAC3151 (continued)

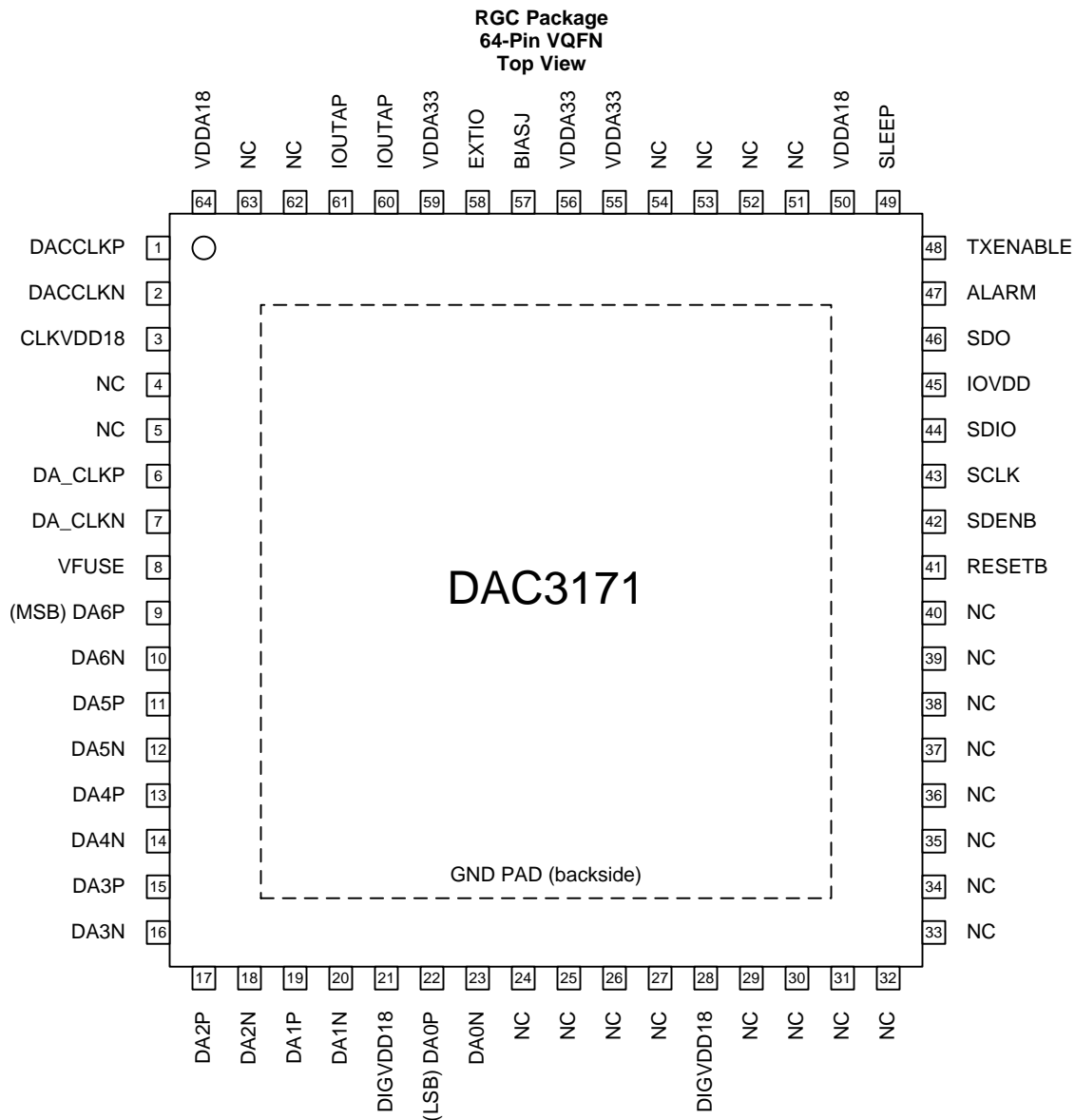
PIN		I/O	DESCRIPTION
NAME	NO.		
DATA INTERFACE			
DATA[9:0]P, DATA[9:0]N	9, 10, 19, 20, 22, 23, 26, 27, 29, 30, 31, 32	I	LVDS input data bits for both channels. Each positive or negative LVDS pair has an internal 100-Ω termination resistor. The data format relative to DATACLKP and DATACLKN clock is Double Data Rate (DDR) with two data transfers per DATAACKP and DATAACKN clock cycle. The data format is interleaved with channel A (rising edge) and channel B (falling edge). In the default mode (reverse bus not enabled): DATA13P and DATA13N are most significant data bit (MSB) DATA0P and DATA0N are least significant data bit (LSB)
DATACLKP, DATACLKN	24, 25	I	DDR differential input data clock. Edge to center nominal timing. Channel A rising edge, channel B falling edge in multiplexed output mode.
SYNCP, SYNCPN	6, 7	I	Reset the FIFO or to be used as a syncing source. These two functions are captured with the rising edge of DATACLKP and DATACLKN. The signal captured by the falling edge of DATACLKP and DATACLKN.
ALIGNP, ALIGNN	4, 5	I	LVPECL FIFO output synchronization. This positive and negative pair is captured with the rising edge of DACCLKP and DACCLKN. It is used to reset the clock dividers and for multiple DAC synchronization. If unused it can be left unconnected.
OUTPUT OR CLOCK			
DACCLKP, DACCLKN	1, 2	I	LVPECL clock input for DAC core with a self-bias of approximately CLKVDD18 / 2.
IOUTAP, IOUTAN	61, 60	O	A-channel DAC current output. An offset binary data pattern of 0x0000 at the DAC input results in a full scale current source and the most positive voltage on the IOUTAP pin. Similarly, a 0xFFFF data input results in a 0 mA current source and the least positive voltage on the IOUTAP pin.
REFERENCE			
EXTIO	58	I/O	Used as external reference input when internal reference is disabled. Requires a 0.1-μF decoupling capacitor to GND when used as reference output.
BIASJ	57	O	Full-scale output current bias. For 20-mA full-scale output current, connect a 960-Ω resistor to GND.
POWER SUPPLY			
IOVDD	45	I	Supply voltage for CMOS IO's. 1.8 V to 3.3 V.
CLKVDD18	3	I	1.8 V clock supply
DIGVDD18	21, 28	I	1.8 V digital supply. Also supplies LVDS receivers.
VDDA18	50, 64	I	Analog 1.8 V supply
VDDA33	55, 56, 59	I	Analog 3.3 V supply
VFUSE	8	I	Digital supply voltage. (1.8 V) This supply pin is also used for factory fuse programming. Connect to DVDD pins for normal operation.
NC	33, 34, 39, 40, 51, 52, 53, 54, 62, 63	–	Not used. These pins can be left open or tied to GROUND in actual application use. It is recommended to turn off pin 33-40 (register lvdsdata_ena) to save power.


Pin Functions: DAC3161

PIN		I/O	DESCRIPTION
NAME	NO.		
CONTROL OR SERIAL			
SCLK	43	I	Serial interface clock. Internal pull-down.
SDENB	42	I	Serial data enable. Internal pullup.
SDIO	44	I/O	Bi-directional serial data in 3 pin mode (default). In 4-pin interface mode (register <code>sif4_ena</code> (config 0, bit 9)), the SDIO pin in an input only. Internal pull-down.
SDO	46	O	Uni-directional serial interface data in 4 pin mode (register <code>sif4_ena</code> (config 0, bit 9)). The SDO pin is tri-stated in 3-pin interface mode (default). Internal pull-down.
RESETB	41	I	Serial interface reset input. Active low. Initialized internal registers during high to low transition. Asynchronous. Internal pullup. A reset event after every power cycle may be needed to reinitialize all SPI registers to their default values.
ALARM	47	O	CMOS output for ALARM condition.
TXENABLE	48	I	Transmit enable active high input. TXENABLE must be high for the DATA to the DAC to be enabled. When TXENABLE is low, the digital logic section is forced to all 0, and any input data is ignored. Internal pull-down.
SLEEP	49	I	Puts device in sleep, active high. Internal pull-down.

Pin Functions: DAC3161 (continued)

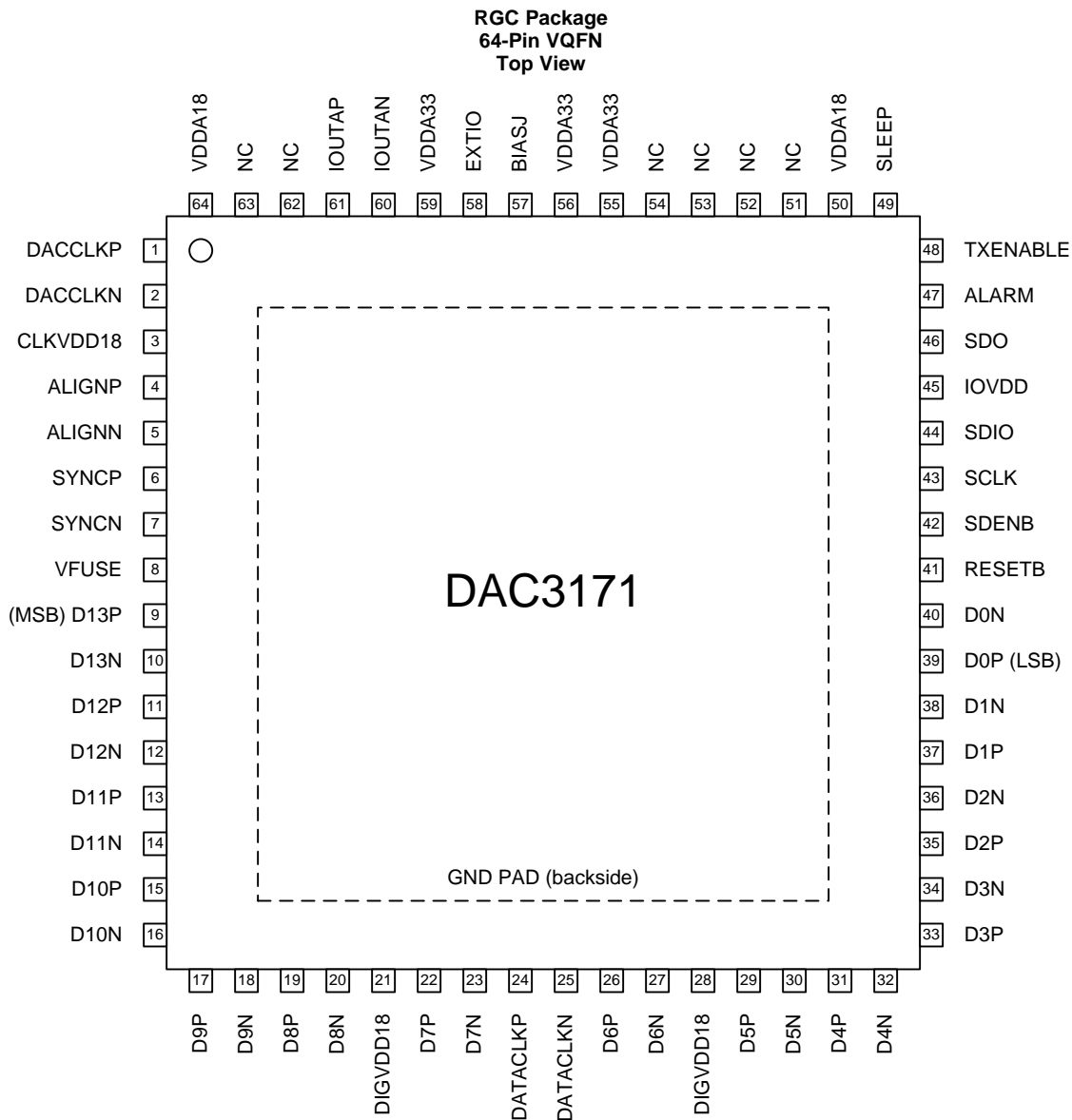
PIN		I/O	DESCRIPTION
NAME	NO.		
DATA INTERFACE			
DATA[11:0]P, DATA[11:0]N	9, 10, 19, 20, 22, 23, 26, 27, 29, 30, 35, 36	I	LVDS input data bits for both channels. Each positive or negative LVDS pair has an internal 100-Ω termination resistor. The data format relative to DATACLKP and DATACLKN clock is Double Data Rate (DDR) with two data transfers per DATAACKP and DATAACKN clock cycle. The data format is interleaved with channel A (rising edge) and channel B (falling edge). In the default mode (reverse bus not enabled): DATA13P and DATA13N are most significant data bit (MSB) DATA0P and DATA0N are least significant data bit (LSB)
DATACLKP, DATACLKN	24, 25	I	DDR differential input data clock. Edge to center nominal timing. Channel A rising edge, channel B falling edge in multiplexed output mode.
SYNCP, SYNCN	6, 7	I	Reset the FIFO or to be used as a syncing source. These two functions are captured with the rising edge of DATACLKP and DATACLKN. The signal captured by the falling edge of DATACLKP and DATACLKN.
ALIGNP, ALIGNN	4, 5	I	LVPECL FIFO output synchronization. This positive or negative pair is captured with the rising edge of DACCLKP and DACCLKN. It is used to reset the clock dividers and for multiple DAC synchronization. If unused it can be left unconnected.
OUTPUT OR CLOCK			
DACCLKP, DACCLKN	1, 2	I	LVPECL clock input for DAC core with a self-bias of approximately CLKVDD18 / 2.
IOUTAP, IOUTAN	61, 60	O	A-channel DAC current output. An offset binary data pattern of 0x0000 at the DAC input results in a full scale current source and the most positive voltage on the IOUTAP pin. Similarly, a 0xFFFF data input results in a 0 mA current source and the least positive voltage on the IOUTAP pin.
REFERENCE			
EXTIO	58	I/O	Used as external reference input when internal reference is disabled. Requires a 0.1-μF decoupling capacitor to GND when used as reference output.
BIASJ	57	O	Full-scale output current bias. For 20-mA full-scale output current, connect a 960-Ω resistor to GND.
POWER SUPPLY			
IOVDD	45	I	Supply voltage for CMOS IO's. 1.8 V to 3.3 V.
CLKVDD18	3	I	1.8 V clock supply
DIGVDD18	21, 28	I	1.8 V digital supply. Also supplies LVDS receivers.
VDDA18	50, 64	I	Analog 1.8 V supply
VDDA33	55, 56, 59	I	Analog 3.3 V supply
VFUSE	8	I	Digital supply voltage. (1.8 V) This supply pin is also used for factory fuse programming. Connect to DVDD pins for normal operation.
NC	37, 38, 39, 40, 51, 52, 53, 54, 62, 63	–	Not used. These pins can be left open or tied to GROUND in actual application use. It is recommended to turn off pin 37-40 (register lvdsdata_ena) to save power.


Pin Functions: DAC3171 7-Bit Interface Mode

PIN		I/O	DESCRIPTION
NAME	NO.		
CONTROL OR SERIAL			
SCLK	43	I	Serial interface clock. Internal pulldown.
SDENB	42	I	Serial data enable. Internal pullup.
SDIO	44	I/O	Bi-directional serial data in 3 pin mode (default). In 4-pin interface mode (register XYZ), the SDIO pin in an input only. Internal pulldown.
SDO	46	O	Uni-directional serial interface data in 4 pin mode (register XYZ). The SDO pin is tri-stated in 3-pin interface mode (default). Internal pulldown.
RESETB	41	I	Serial interface reset input. Active low. Initialized internal registers during high to low transition. Asynchronous. Internal pullup. A reset event after every power cycle may be needed to reinitialize all SPI registers to their default values.
ALARM	47	O	CMOS output for ALARM condition.

Pin Functions: DAC3171 7-Bit Interface Mode (continued)

PIN		I/O	DESCRIPTION
NAME	NO.		
TXENABLE	48	I	Transmit enable active high input. TXENABLE must be high for the DATA to the DAC to be enabled. When TXENABLE is low, the digital logic section is forced to all 0, and any input data is ignored. Internal pulldown.
SLEEP	49	I	Puts device in sleep, active high. Internal pulldown.
DATA INTERFACE			
DA[6:0]P, DA[6:0]N	9, 10, 19, 20, 22, 23	I	LVDS positive input data bits for channel A. Each positive or negative LVDS pair has an internal 100-Ω termination resistor. The data format relative to DA_CLKP and DA_CLKN clock is Double Data Rate (DDR) with two data transfers per DA_CLKP and DA_CLKN clock cycle. The data format is 7 MSBs (rising edge) or 7 LSBs (falling edge). In the default mode (reverse bus not enabled): D6P and D6N are most significant data bit (MSB) D0P and D0N are least significant data bit (LSB)
DA_CLKP, DA_CLKN	6, 7	I	DDR differential input data clock for channel A. Edge to center nominal timing. Assumes SPI register field dual_ena (bit0 of Config3) is set. Otherwise, DA_CLKP and DA_CLKN will be on pins 24 or 25 as in DAC3171 14-bit Interface Mode.
OUTPUT OR CLOCK			
DACCLKP, DACCLKN	1, 2	I	LVPECL clock input for DAC core with a self-bias of approximately CLKVDD18 / 2.
IOUTAP, IOUTAN	61, 60	O	A-channel DAC current output. An offset binary data pattern of 0x0000 at the DAC input results in a full scale current source and the most positive voltage on the IOUTA1 pin. Similarly, a 0xFFFF data input results in a 0 mA current source and the least positive voltage on the IOUTA1 pin. The IOUTA2 pin is the complement of IOUTA1.
REFERENCE			
EXTIO	58	I/O	Used as external reference input when internal reference is disabled. Requires a 0.1-μF decoupling capacitor to GND when used as reference output.
BIASJ	57	O	Full-scale output current bias. For 20-mA full-scale output current, connect a 960-Ω resistor to GND.
POWER SUPPLY			
IOVDD	45	I	Supply voltage for CMOS IO's. 1.8 V to 3.3 V.
CLKVDD18	3	I	1.8 V clock supply
DIGVDD18	21, 28	I	1.8 V digital supply. Also supplies LVDS receivers.
VDDA18	50, 64	I	Analog 1.8 V supply
VDDA33	55, 56, 59	I	Analog 3.3 V supply
VFUSE	8	I	Digital supply voltage. (1.8 V) This supply pin is also used for factory fuse programming. Connect to DVDD pins for normal operation.
NC	4, 5, 24, 25, 26, 27, 29, 30-39, 40, 51, 52, 53, 62, 63	–	Not used. Pin 4 can be left open or tied to DIGVDD18, and other pins can be left open or tied to GROUND in actual application use. It is recommended to turn off pin 24, 25, 26, 27, 29, 30-39, and 40 (register lvdsdataack_ena, lvdsdata_ena) to save power.


Pin Functions: DAC3171 14-Bit Interface Mode

PIN		I/O	DESCRIPTION
NAME	NO.		
CONTROL OR SERIAL			
SCLK	43	I	Serial interface clock. Internal pulldown.
SDENB	42	I	Serial data enable. Internal pullup.
SDIO	44	I/O	Bi-directional serial data in 3 pin mode (default). In 4-pin interface mode (register sif4_ena (config 0, bit 9)), the SDIO pin in an input only. Internal pulldown.
SDO	46	O	Uni-directional serial interface data in 4 pin mode (register sif4_ena (config 0, bit 9)). The SDO pin is tri-stated in 3-pin interface mode (default). Internal pulldown.
RESETB	41	I	Serial interface reset input. Active low. Initialized internal registers during high to low transition. Asynchronous. Internal pullup. A reset event after every power cycle may be needed to reinitialize all SPI registers to their default values.
ALARM	47	O	CMOS output for ALARM condition.

Pin Functions: DAC3171 14-Bit Interface Mode (continued)

PIN		I/O	DESCRIPTION
NAME	NO.		
TXENABLE	48	I	Transmit enable active high input. TXENABLE must be high for the DATA to the DAC to be enabled. When TXENABLE is low, the digital logic section is forced to all 0, and any input data is ignored. Internal pulldown.
SLEEP	49	I	Puts device in sleep, active high. Internal pulldown.
DATA INTERFACE			
DATA[13:0]P, DATA[13:0]N	9, 10-19, 20, 22, 23, 26, 27, 29, 30-39, 40	I	LVDS input data bits for both channels. Each positive or negative LVDS pair has an internal 100- Ω termination resistor. The data format relative to DATACLKP and DATACLKN clock is Double Data Rate (DDR) with two data transfers per DATAACKP and DATAACKN clock cycle. The data format is interleaved with channel A (rising edge) and channel B (falling edge). In the default mode (reverse bus not enabled): DATA13P and DATA13N are most significant data bit (MSB) DATA0P and DATA0N are least significant data bit (LSB)
DATACLKP, DATACLKN	24, 25	I	DDR differential input data clock. Edge to center nominal timing. Channel A rising edge, channel B falling edge in multiplexed output mode.
SYNCP, SYNCPN	6, 7	I	Reset the FIFO or to be used as a syncing source. These two functions are captured with the rising edge of DATACLKP and DATACLKN. The signal captured by the falling edge of DATACLKP and DATACLKN.
ALIGNP, ALIGNN	4, 5	I	LVPECL FIFO output synchronization. This positive or negative pair is captured with the rising edge of DACCLKP and DACCLKN. It is used to reset the clock dividers and for multiple DAC synchronization. If unused it can be left unconnected.
OUTPUT OR CLOCK			
DACCLKP, DACCLKN	1, 2	I	LVPECL clock input for DAC core with a self-bias of approximately CLKVDD18 / 2.
IOUTAP, IOUTAN	61, 60	O	A-channel DAC current output. An offset binary data pattern of 0x0000 at the DAC input results in a full scale current source and the most positive voltage on the IOUTAP pin. Similarly, a 0xFFFF data input results in a 0 mA current source and the least positive voltage on the IOUTAP pin.
REFERENCE			
EXTIO	58	I/O	Used as external reference input when internal reference is disabled. Requires a 0.1- μ F decoupling capacitor to GND when used as reference output.
BIASJ	57	O	Full-scale output current bias. For 20-mA full-scale output current, connect a 960- Ω resistor to GND.
POWER SUPPLY			
IOVDD	45	I	Supply voltage for CMOS IO's, 1.8 V to 3.3 V.
CLKVDD18	3	I	1.8 V clock supply
DIGVDD18	21, 28	I	1.8 V digital supply. Also supplies LVDS receivers.
VDDA18	50, 64	I	Analog 1.8 V supply
VDDA33	55, 56, 59	I	Analog 3.3 V supply
VFUSE	8	I	Digital supply voltage. (1.8 V) This supply pin is also used for factory fuse programming. Connect to DVDD pins for normal operation.
NC	51-54, 62, 63	-	Not used. These pins can be left open or tied to GROUND in actual application use.

6 Specifications

6.1 Absolute Maximum Ratings

over operating free-air temperature range (unless otherwise noted)⁽¹⁾

		MIN	MAX	UNIT
Supply voltage	VDDA33 to GND	-0.5	4	V
	VDDA18 to GND	-0.5	2.3	V
	CLKVDD18 to GND	-0.5	2.3	V
	IOVDD to GND	-0.5	4	V
	DIGVDD18 to GND	-0.5	2.3	V
Pin voltage	CLKVDD18 to DIGVDD18	-0.5	0.5	V
	VDDA18 to DIGVDD18	-0.5	0.5	V
	DA[6:0]P, DA[6:0]N, D[13:0]P, D[13:0]N, DATACLKP, DATACLKN, DA_CLKP, DA_CLKPN, SYNCN, SYNCP to GND	-0.5	DIGVDD18 + 0.5	V
	DACCLKP, DACCLKN, ALIGNP, ALIGNN	-0.5	CLKVDD18 + 0.5	V
	TXENABLE, ALARM, SDO, SDIO, SCLK, SDENB, RESETB to GND	-0.5	IOVDD + 0.5	V
	IOUTAP, IOUTAN to GND	-0.7	1.4	V
	EXTIO, BIASJ to GND	-0.5	VDDA33 + 0.5	V
Temperature	Operating junction, T _J		125	°C
	Operating free-air temperature, T _A	-40	85	
	Storage, T _{stg}	-65	150	

(1) Stresses beyond those listed under *Absolute Maximum Ratings* may cause permanent damage to the device. These are stress ratings only, which do not imply functional operation of the device at these or any other conditions beyond those indicated under *Recommended Operating Conditions*. Exposure to absolute-maximum-rated conditions for extended periods may affect device reliability.

6.2 ESD Ratings

		VALUE	UNIT
V _(ESD) Electrostatic discharge	Human body model (HBM), per ANSI/ESDA/JEDEC JS-001, all pins ⁽¹⁾	±2000	V
	Charged device model (CDM), per JEDEC specification JESD22-C101, all pins ⁽²⁾	±500	V

(1) JEDEC document JEP155 states that 500-V HBM allows safe manufacturing with a standard ESD control process.

(2) JEDEC document JEP157 states that 250-V CDM allows safe manufacturing with a standard ESD control process.

6.3 Recommended Operating Conditions

		MIN	NOM	MAX	UNIT
DIGVDD18	Digital power supply, 1.8 V	1.71	1.8	1.89	V
VFUSE	Digital power supply, fuse	1.71	1.8	1.89	V
VDDA18	Analog power supply, 1.8 V	1.71	1.8	1.89	V
CLKVDD18	Clock power supply, 1.8 V	1.71	1.8	1.89	V
VDDA33	Analog power supply, 3.3 V	3.15	3.3	3.45	V
IOVDD ⁽¹⁾	Input/output (IO) power supply	1.71		3.45	V
T _J	Operating junction temperature ⁽²⁾			105	°C
T _A	Operating free-air temperature	-40	25	85	°C

(1) Sets CMOS IO voltage levels. Nominal 1.8 V, 2.5 V or 3.3 V.

(2) Prolonged use above this junction temperature may increase the device failure-in-time (FIT) rate.

6.4 Thermal Information

THERMAL METRIC ⁽¹⁾		DAC31x1	
		RGC (VQFN)	
		64 PINS	
			UNIT
R _{θJA}	Junction-to-ambient thermal resistance	23.0	°C/W
R _{θJC(top)}	Junction-to-case (top) thermal resistance	7.6	°C/W
R _{θJB}	Junction-to-board thermal resistance	2.8	°C/W
ψ _{JT}	Junction-to-top characterization parameter	0.1	°C/W
ψ _{JB}	Junction-to-board characterization parameter	2.8	°C/W
R _{θJC(bot)}	Junction-to-case (bottom) thermal resistance	0.2	°C/W

(1) For more information about traditional and new thermal metrics, see the [Semiconductor and IC Package Thermal Metrics](#) application report.

6.5 Electrical Characteristics: DC Specifications

full temperature range is T_{MIN} = -40°C to T_{MAX} = 85°C, DAC sample rate = 500 MSPS, 50% clock duty cycle, VDDA33 and IOVDD = 3.3 V, VDDA18, CLKVDD18, and DIGVDD18 = 1.8 V, IOUT_{FS} = 20 mA (unless otherwise noted)

PARAMETER	TEST CONDITIONS	DAC3151			DAC3161			DAC3171			UNIT
		MIN	TYP ⁽¹⁾	MAX	MIN	TYP ⁽¹⁾	MAX	MIN	TYP ⁽¹⁾	MAX	
Resolution		10			12			14			Bits
DC ACCURACY											
DNL differential nonlinearity	1 LSB = IOUT _{FS} / 2 ¹⁰ for DAC3151,	±0.04			±0.2			±1			LSB
INL integral nonlinearity	1 LSB = IOUT _{FS} / 2 ¹² for DAC3161, 1 LSB = IOUT _{FS} / 2 ¹⁴ for DAC3171	±0.15			±0.5			±2			LSB
ANALOG OUTPUTS											
Coarse gain linearity		±0.4			±0.4			±0.4			LSB
Offset error	Mid code offset	0.01%			0.01%			0.01%			FSR
Gain error	With external reference	±2%			±2%			±2%			FSR
	With internal reference	±2%			±2%			±2%			
Gain mismatch	With internal reference	-2%		2%	-2%		2%	-2%		2%	FSR
Minimum full scale output current	Nominal full-scale current, IOUT _{FS} = 16 × IBAIS current	2			2			2			mA
Maximum full scale output current		20			20			20			
Output compliance range	IOUT _{FS} = 20 mA	-0.5		1	-0.5		1	-0.5		1	V
Output resistance		300			300			300			kΩ
Output capacitance		5			5			5			pF
REFERENCE OUTPUT											
V _{REF}	Reference output voltage	1.14	1.2	1.26	1.14	1.2	1.26	1.14	1.2	1.26	V
	Reference output current	100			100			100			nA
REFERENCE INPUT											
VEXTIO input voltage range	External reference mode	0.1	1.2	1.25	0.1	1.2	1.25	0.1	1.2	1.25	V
Input resistance		1			1			1			MΩ
Small signal bandwidth		500			500			500			kHz
Input capacitance		100			100			100			pF
TEMPERATURE COEFFICIENTS											
Offset drift		±1			±1			±1			ppm of FSR/°C
Gain drift	With external reference	±15			±15			±15			ppm/°C
	With internal reference	±30			±30			±30			
Reference voltage drift		±8			±8			±8			ppm/°C

(1) Typical values at T_A = 25°C.

Electrical Characteristics: DC Specifications (continued)

full temperature range is $T_{MIN} = -40^{\circ}\text{C}$ to $T_{MAX} = 85^{\circ}\text{C}$, DAC sample rate = 500 MSPS, 50% clock duty cycle, VDDA33 and IOVDD = 3.3 V, VDDA18, CLKVDD18, and DIGVDD18 = 1.8 V, IOU_{FS} = 20 mA (unless otherwise noted)

PARAMETER	TEST CONDITIONS	DAC3151			DAC3161			DAC3171			UNIT
		MIN	TYP ⁽¹⁾	MAX	MIN	TYP ⁽¹⁾	MAX	MIN	TYP ⁽¹⁾	MAX	
POWER CONSUMPTION											
I_{VDDA33}	3.3 V analog supply current	28			28			28 35			mA
$I_{CLKVDD18}$	1.8 V clock and analog supply current (CLKVDD18 and VDDA18)	47			47			47 56			mA
$I_{DIGVDD18}$	1.8 V digital supply current (DIGVDD18 and VFUSE)	110			110			110 125			mA
I_{IOVDD}	1.8 V IO supply current	0.002			0.002			0.002 0.015			mA
P_{dis}	Total power dissipation	375			375			375 442			mW
MODE 1 $f_{DAC} = 491.52$ MSPS, QMC on, IF = 20 MHz, input full word width											
I_{VDDA33}	3.3 V analog supply current	28			28			28			mA
$I_{CLKVDD18}$	1.8 V clock and analog supply current (CLKVDD18 and VDDA18)	37			37			37			mA
$I_{DIGVDD18}$	1.8 V digital supply current (DIGVDD18 and VFUSE)	80			80			80			mA
I_{IOVDD}	1.8 V IO supply current	0.002			0.002			0.002			mA
P_{dis}	Total power dissipation	303			303			303			mW
MODE 2 $f_{DAC} = 320$ MSPS, QMC on, IF = 20 MHz, input full word width											
I_{VDDA33}	3.3 V analog supply current	2.6			2.6			2.6			mA
$I_{CLKVDD18}$	1.8 V clock and analog supply current (CLKVDD18 and VDDA18)	43			43			43			mA
$I_{DIGVDD18}$	1.8 V digital supply current (DIGVDD18 and VFUSE)	106			106			106			mA
I_{IOVDD}	1.8 V IO supply current	0.003			0.003			0.003			mA
P_{dis}	Total power dissipation	277			277			277			mW
MODE 3 Sleep mode, $f_{DAC} = 491.52$ MSPS, DAC in sleep mode, input full word width											
I_{VDDA33}	3.3 V analog supply current	1.6	4		1.6	4		1.6	4	mA	
$I_{CLKVDD18}$	1.8 V clock and analog supply current (CLKVDD18 and VDDA18)	1.8	4		1.8	4		1.8	4	mA	
$I_{DIGVDD18}$	1.8 V digital supply current (DIGVDD18 and VFUSE)	0.7	3		0.7	3		0.7	3	mA	
I_{IOVDD}	1.8 V IO supply current	0.003	0.015		0.003	0.015		0.003	0.015	mA	
P_{dis}	Total power dissipation	10	26		10	26		10	26	mW	
MODE 4 Power-down mode, no clock, DAC in sleep mode, input full word width											
PSRR	Power supply rejection ratio	DC tested	-0.4%	0.4%	-0.4%	0.4%	-0.4%	0.4%	-0.4%	0.4%	FSR/V

6.6 Electrical Characteristics: AC Specifications

full temperature range is $T_{MIN} = -40^{\circ}\text{C}$ to $T_{MAX} = 85^{\circ}\text{C}$, DAC sample rate = 500 MSPS, 50% clock duty cycle, VDDA33 and IOVDD = 3.3 V, VDDA18, CLKVDD18, and DIGVDD18 = 1.8 V, $\text{IOUT}_{FS} = 20\text{ mA}$ (unless otherwise noted)

PARAMETER	TEST CONDITIONS	DAC3151			DAC3161			DAC3171			UNIT
		MIN	TYP ⁽¹⁾	MAX	MIN	TYP ⁽¹⁾	MAX	MIN	TYP ⁽¹⁾	MAX	
ANALOG OUTPUT											
f_{DAC}	Maximum sample rate	500			500			500			MSPS
	Digital latency	26			26			26			ns
AC PERFORMANCE											
SFDR	Spurious free dynamic range	$f_{DAC} = 500\text{ MSPS}, f_{out} = 10.1\text{ MHz}$		81	82		82		dBc		
		$f_{DAC} = 500\text{ MSPS}, f_{out} = 20.1\text{ MHz}$		76	77		78		dBc		
		$f_{DAC} = 500\text{ MSPS}, f_{out} = 70.1\text{ MHz}$		69	70		74		dBc		
IMD3	Intermodulation distortion	$f_{DAC} = 500\text{ MSPS}, f_{out} = 10.1 \pm 0.5\text{ MHz}$		82	83		84		dBc		
		$f_{DAC} = 500\text{ MSPS}, f_{out} = 20.1 \pm 0.5\text{ MHz}$		81	82		84		dBc		
		$f_{DAC} = 500\text{ MSPS}, f_{out} = 70.1 \pm 0.5\text{ MHz}$		73.5	74		75		dBc		
		$f_{DAC} = 500\text{ MSPS}, f_{out} = 150.1 \pm 0.5\text{ MHz}$		61	61		63		dBc		
NSD	Noise spectral density	$f_{DAC} = 500\text{ MSPS}, f_{out} = 10.1\text{ MHz}$		147	158		160		dBc/Hz		
		$f_{DAC} = 500\text{ MSPS}, f_{out} = 20.1\text{ MHz}$		146	156		157		dBc/Hz		
		$f_{DAC} = 500\text{ MSPS}, f_{out} = 70.1\text{ MHz}$		146	153		155		dBc/Hz		
ACLR	Adjacent channel leakage ratio	$f_{DAC} = 491.52\text{ MSPS}, f_{out} = 30.72\text{ MHz}, \text{WCDMA TM1}$		69	77		78		dBc		
		$f_{AC} = 491.52\text{ MSPS}, f_{out} = 153.6\text{ MHz}, \text{WCDMA TM1}$		68	73		74		dBc		

(1) Typical values at $T_A = 25^{\circ}\text{C}$.

6.7 Electrical Characteristics: Digital Specifications

full temperature range is $T_{MIN} = -40^{\circ}\text{C}$ to $T_{MAX} = 85^{\circ}\text{C}$, DAC sample rate = 500 MSPS, 50% clock duty cycle, VDDA33 and IOVDD = 3.3 V, VDDA18, CLKVDD18, and DIGVDD18 = 1.8 V, $\text{IOUT}_{FS} = 20\text{ mA}$ (unless otherwise noted)

PARAMETER	TEST CONDITIONS	DAC3151			DAC3161			DAC3171			UNIT	
		MIN	TYP ⁽¹⁾	MAX	MIN	TYP ⁽¹⁾	MAX	MIN	TYP ⁽¹⁾	MAX		
CMOS DIGITAL INPUTS (RESETB, SDENB, SCLK, SDIO, TXENABLE)												
V_{IH}	High-level input voltage	IOVDD = 3.3 V, 2.5 V, or 1.8 V			$0.6 \times \text{IOVDD}$			$0.6 \times \text{IOVDD}$			V	
V_{IL}	Low-level input voltage	IOVDD = 3.3 V, 2.5 V, or 1.8 V			$0.25 \times \text{IOVDD}$			$0.25 \times \text{IOVDD}$			V	
I_{IH}	High-level input current	IOVDD = 3.3 V, 2.5 V, or 1.8 V			-40	40		-40		40		μA
I_{IL}	Low-level input current	IOVDD = 3.3 V, 2.5 V, or 1.8 V			-40	40		-40		40		μA
CMOS DIGITAL OUTPUTS (SDOUT, SDIO)												
V_{OH}	High-level output voltage	IOVDD = 3.3 V, 2.5 V, or 1.8 V			$0.85 \times \text{IOVDD}$			$0.85 \times \text{IOVDD}$			V	
V_{OL}	Low-level output voltage	IOVDD = 3.3 V, 2.5 V, or 1.8 V			$0.125 \times \text{IOVDD}$			$0.125 \times \text{IOVDD}$			V	
LVPECL DIGITAL INPUTS (DACCLKP, DACCLKN, ALIGNP, ALIGNN)												
V_{com}	Input common mode voltage				0.5			0.5			V	
V_{DIFF}	Differential input peak-to-peak voltage				0.4			1.0			V	
LVDS INTERFACE (D[x:0]P, D[x:0]N, DA[x:0]P, DA[x:0]N, DA_CLKP, DA_CLKN, DATACLKP, DATACLKN, SYNCN, SYNCN)												
$V_{A,B+}$	Logic high differential input voltage threshold				175			175			mV	
$V_{A,B-}$	Logic low differential input voltage threshold				-175			-175			mV	
V_{COM}	Input Common Mode Range	1.0	1.2	2.0	1.0	1.2	2.0	1.0	1.2	2.0	V	
Z_T	Internal termination	85	110	135	85	110	135	85	110	135	Ω	
C_L	LVDS input capacitance				2			2			pF	

(1) Typical values at $T_A = 25^{\circ}\text{C}$.

6.8 Timing Requirements

 with nominal supplies and $I_{OUT_{FS}} = 20 \text{ mA}$ (unless otherwise noted)

			MIN	TYP ⁽¹⁾	MAX	UNIT
ANALOG OUTPUT						
$t_{s(DAC)}$	Output settling time to 0.1%	Transition: Code 0x0000 to 0x3FFF		11		ns
t_{PD}	Output propagation delay	Does not include digital latency		2		ns
$t_{r(IOUT)}$	Output rise time 10% to 90%			200		ps
$t_{f(IOUT)}$	Output fall time 90% to 10%			200		ps
SERIAL PORT TIMING						
$t_{s(SENDB)}$	Setup time, SENDB to rising edge of SCLK		20			ns
$t_{s(SDIO)}$	Setup time, SDIO to rising edge of SCLK		10			ns
$t_{h(SDIO)}$	Hold time, SDIO from rising edge of SCLK		5			ns
$t_{(SCLK)}$	Period of SCLK		100			ns
$t_{(SCLKH)}$	High time of SCLK		40			ns
$t_{(SCLKL)}$	Low time of SCLK		40			ns
$t_{d(DATA)}$	Data output delay after falling edge of SCLK			10		ns
T_{RESET}	Minimum RESTB pulse width			25		ns
LVDS INPUT TIMING						
		datadly	clkdly			
$t_{s(DATA)}$	Setup time ⁽²⁾	D[x:0] valid to DATACLK rising for full word interface mode; DA[x:0] valid to DA_CLK rising or falling for 7-bit mode	0	0	-20	ps
			0	1	-120	ps
			0	2	-220	ps
			0	3	-310	ps
			0	4	-390	ps
			0	5	-480	ps
			0	6	-560	ps
			0	7	-630	ps
			1	0	70	ps
			2	0	150	ps
			3	0	230	ps
			4	0	330	ps
			5	0	430	ps
			6	0	530	ps
7	0	620	ps			

(1) Typical values at 25°C.

(2) Test conditions in config3 setting.

Timing Requirements (continued)

with nominal supplies and $IOUT_{FS} = 20\text{ mA}$ (unless otherwise noted)

			MIN	TYP ⁽¹⁾	MAX	UNIT
$t_{h(DATA)}$	Hold time ⁽²⁾	D[x:0] valid to DATACLK rising for full word interface mode; DA[x:0] valid to DA_CLK rising or falling for 7-bit bus mode	datadly			
			clkdly			
			0	0	310	ps
			0	1	390	ps
			0	2	480	ps
			0	3	560	ps
			0	4	650	ps
			0	5	740	ps
			0	6	850	ps
			0	7	930	ps
			1	0	200	ps
			2	0	100	ps
			3	0	20	ps
			4	0	-60	ps
			5	0	-140	ps
6	0	-220	ps			
7	0	-290	ps			

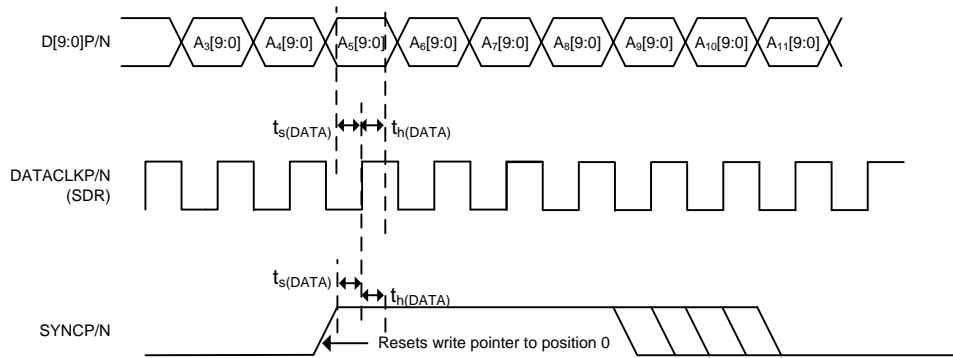


Figure 1. DAC3151 Input Data Timing Diagram

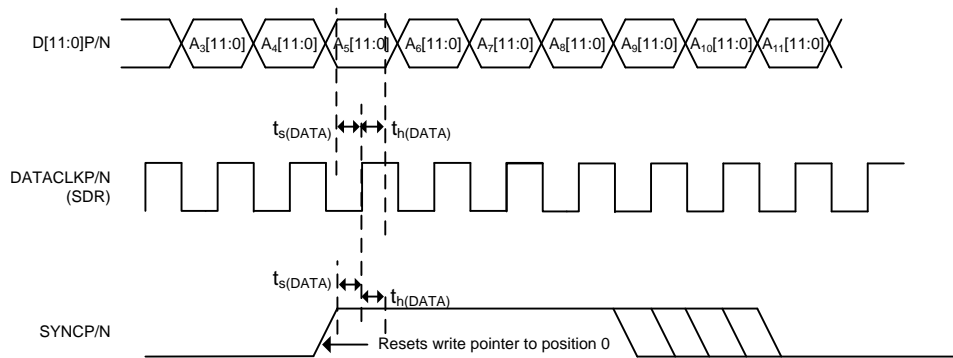
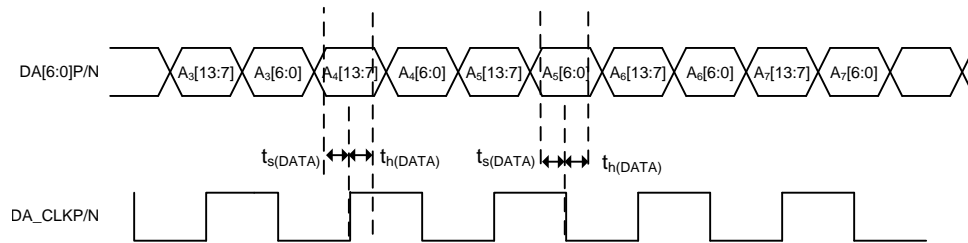
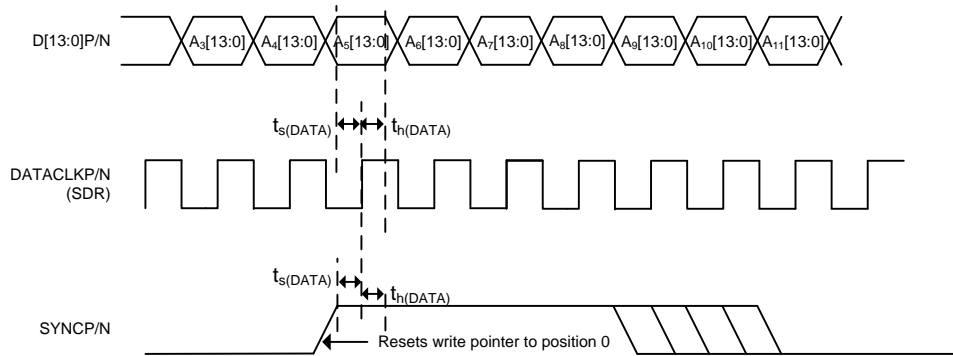


Figure 2. DAC3161 Input Data Timing Diagram


Figure 3. DAC3171 Input Data Timing Diagram for 7-Bit Interface Mode

Figure 4. DAC3171 Input Data Timing for 14-Bit Interface Mode

6.9 Typical Characteristics

all plots are at 25°C, nominal supply voltages, $f_{DAC} = 500$ MSPS, 50% clock duty cycle, 0-dBFS input signal and 20-mA full-scale output current (unless otherwise noted)

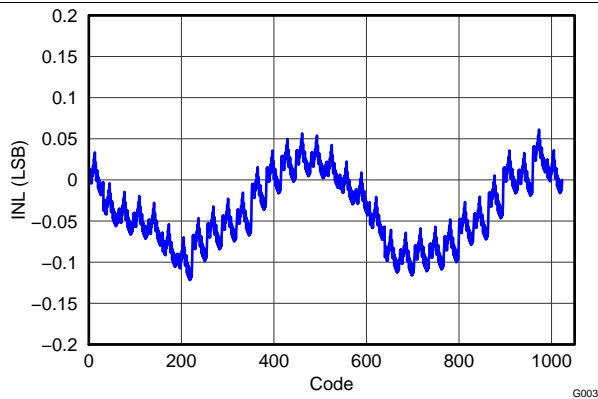


Figure 5. DAC3151 Integral Nonlinearity

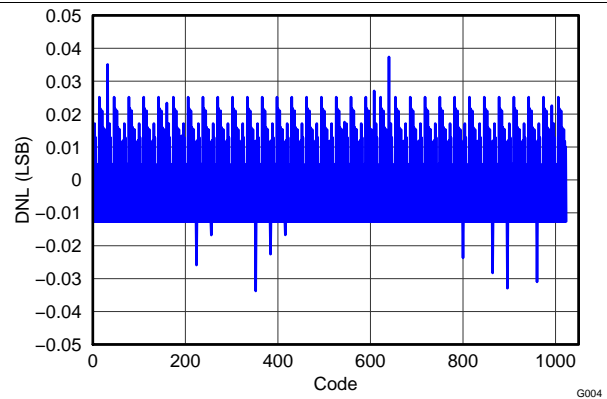


Figure 6. DAC3151 Differential Nonlinearity

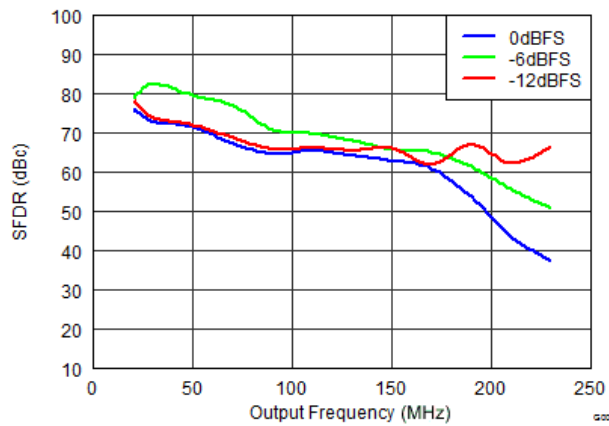


Figure 7. DAC3151 SFDR vs Output Frequency Over Input Scale

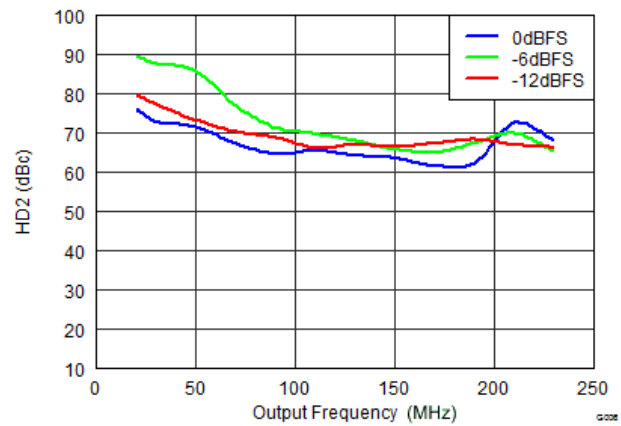


Figure 8. DAC3151 Second-Order Harmonic Distortion vs Output Frequency Over Input Scale

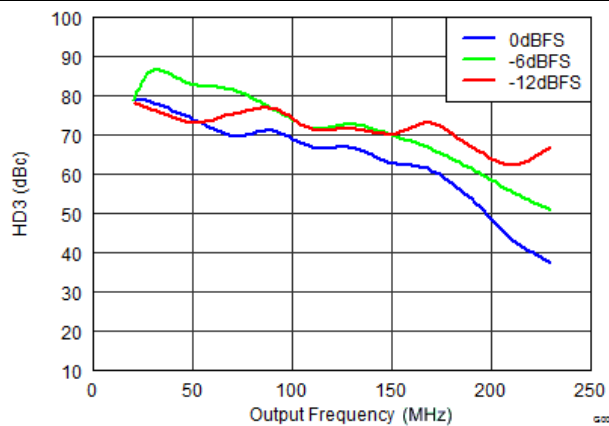


Figure 9. DAC3151 Third-Order Harmonic Distortion vs Output Frequency Over Input Scale

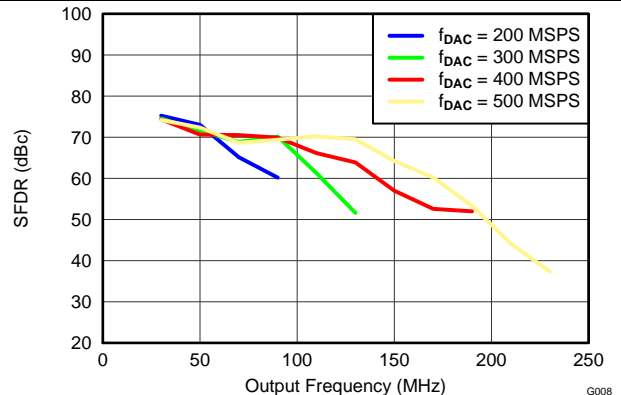


Figure 10. DAC3151 SFDR vs Output Frequency Over f_{DAC}

Typical Characteristics (continued)

all plots are at 25°C, nominal supply voltages, $f_{DAC} = 500$ MSPS, 50% clock duty cycle, 0-dBFS input signal and 20-mA full-scale output current (unless otherwise noted)

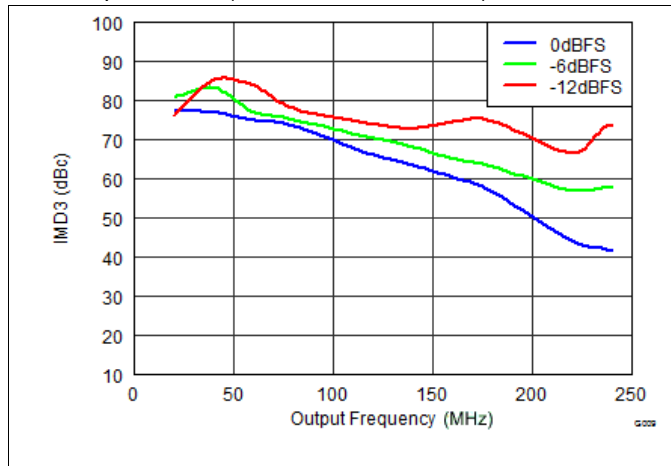


Figure 11. DAC3151 IMD3 vs Output Frequency Over Input Scale

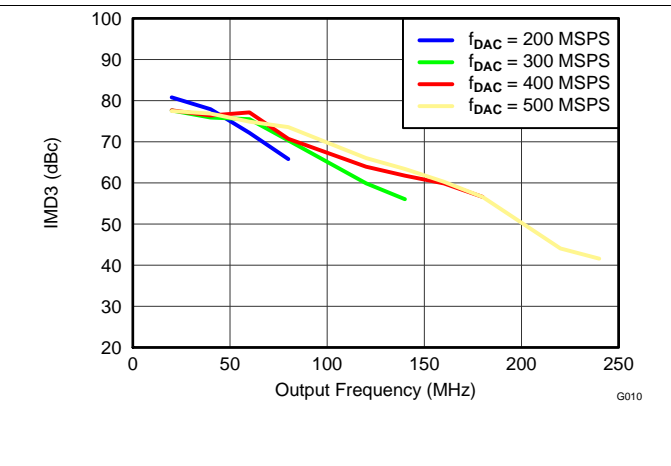


Figure 12. DAC3151 IMD3 vs Output Frequency Over f_{DAC}

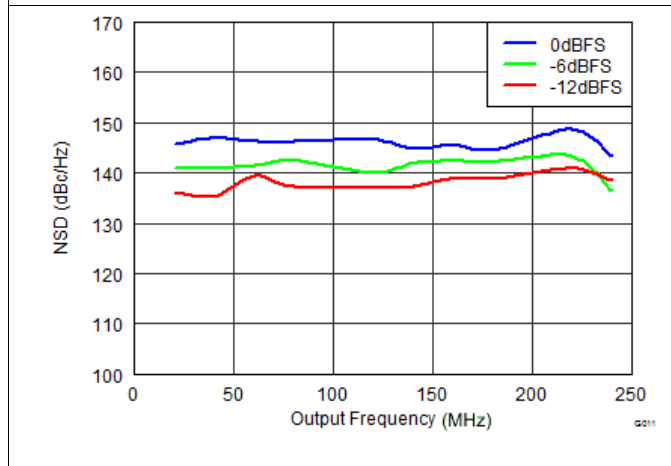


Figure 13. DAC3151 NSD vs Output Frequency Over Input Scale

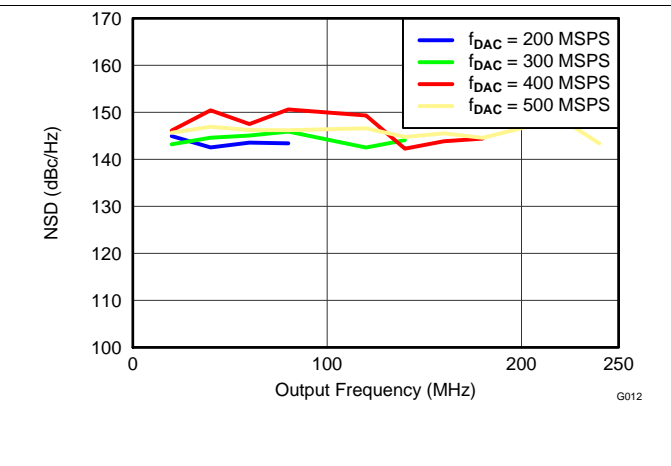


Figure 14. DAC3151 NSD vs Output Frequency Over f_{DAC}

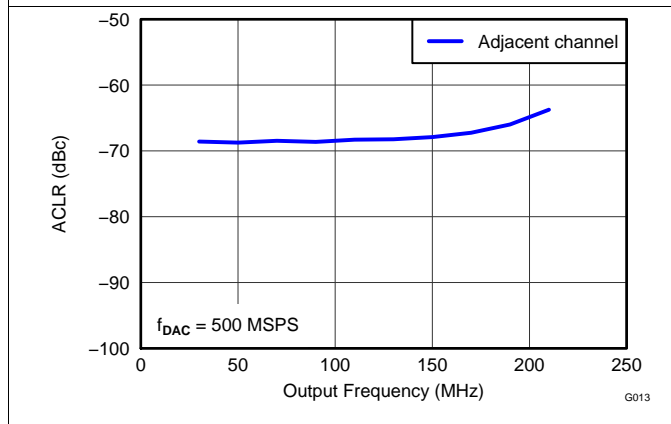


Figure 15. DAC3151 ACLR (Adjacent Channel) vs Output Frequency

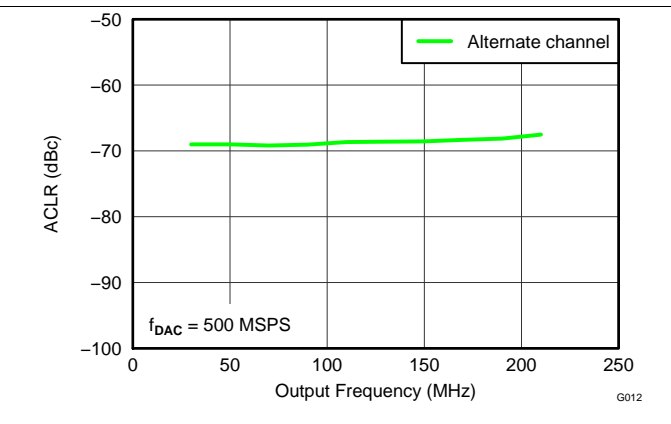


Figure 16. DAC3151 ACLR (Alternate Channel) vs Output Frequency

Typical Characteristics (continued)

all plots are at 25°C, nominal supply voltages, $f_{DAC} = 500$ MSPS, 50% clock duty cycle, 0-dBFS input signal and 20-mA full-scale output current (unless otherwise noted)

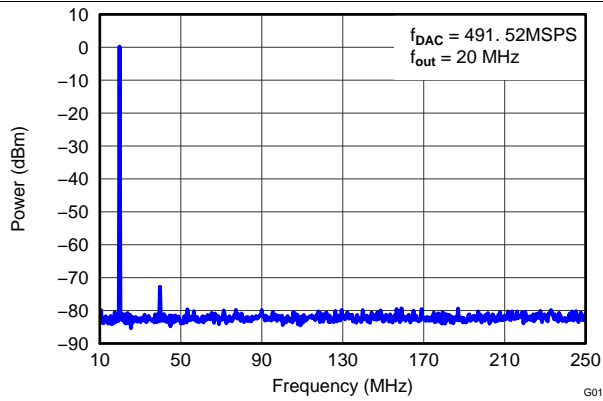


Figure 17. DAC3151 Single-Tone Spectral Plot (IF = 20 MHz)

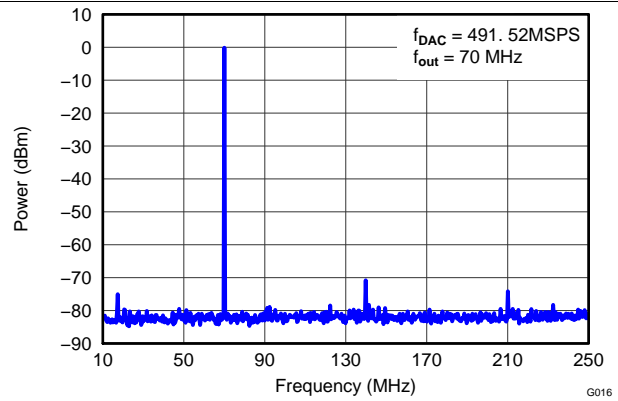


Figure 18. DAC3151 Single-Tone Spectral Plot (IF = 70 MHz)

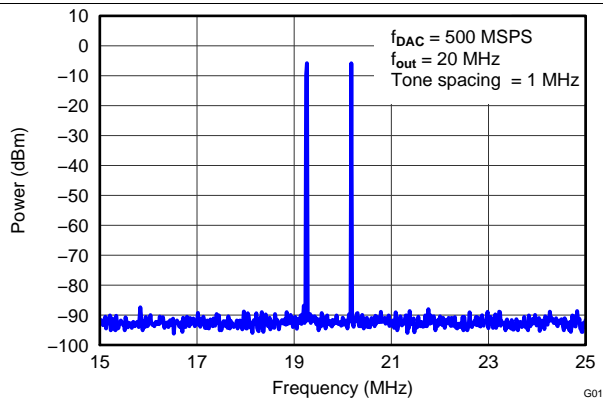


Figure 19. DAC3151 Two-Tone Spectral Plot (IF = 20 MHz)

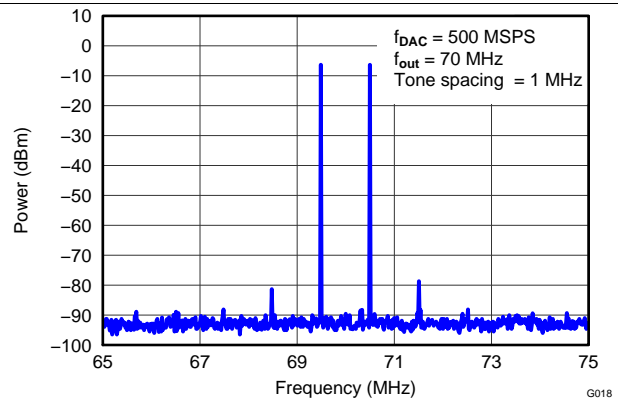


Figure 20. DAC3151 Two-Tone Spectral Plot (IF = 70 MHz)

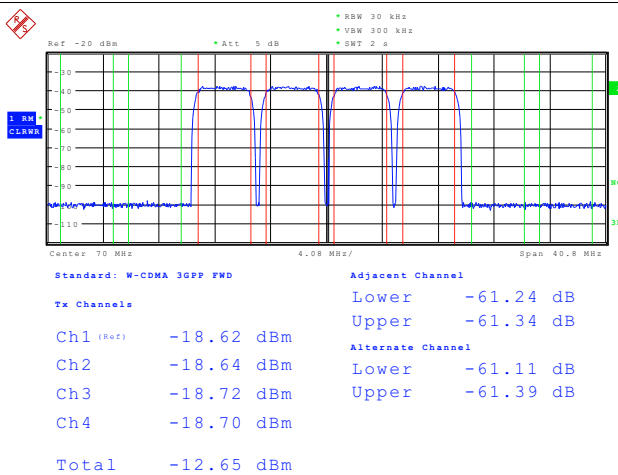


Figure 21. DAC3151 ACPR Four-Carrier WCDMA Test Mode 1

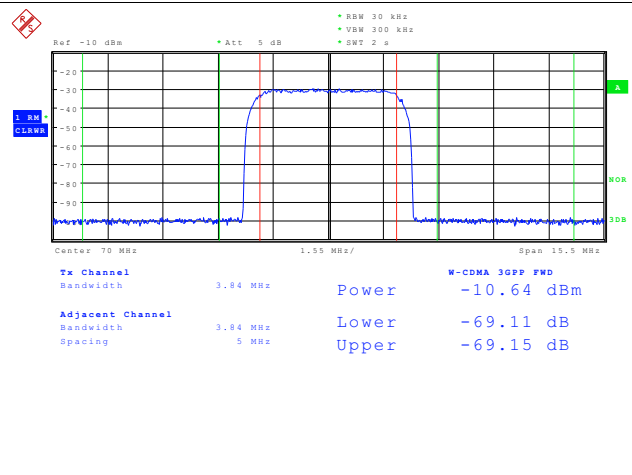


Figure 22. DAC3151 ACPR Single-Carrier WCDMA Test Mode 1

Typical Characteristics (continued)

all plots are at 25°C, nominal supply voltages, $f_{DAC} = 500$ MSPS, 50% clock duty cycle, 0-dBFS input signal and 20-mA full-scale output current (unless otherwise noted)

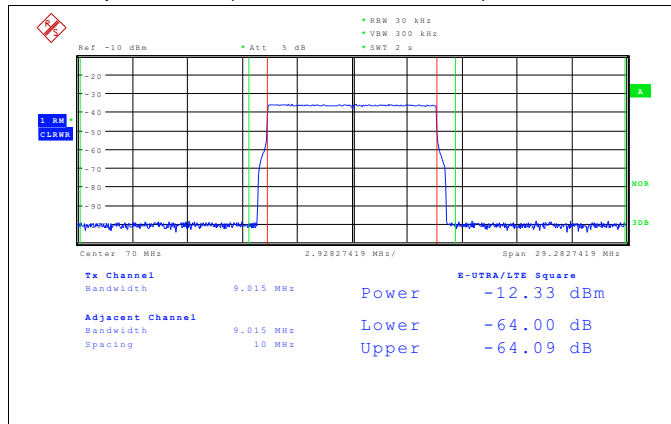


Figure 23. DAC3151 ACPR LTE 10-MHz FDD E-TM 1.1

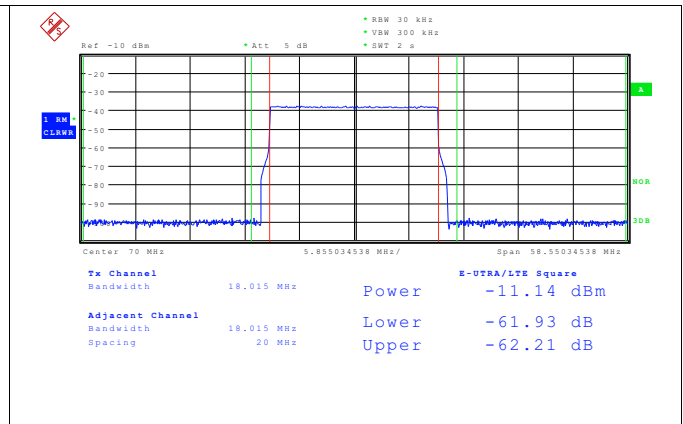


Figure 24. DAC3151 ACPR LTE 20-MHz FDD E-TM 1.1

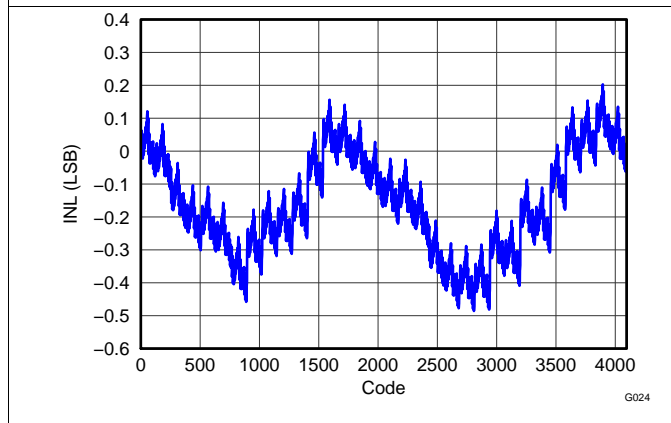


Figure 25. DAC3161 Integral Nonlinearity

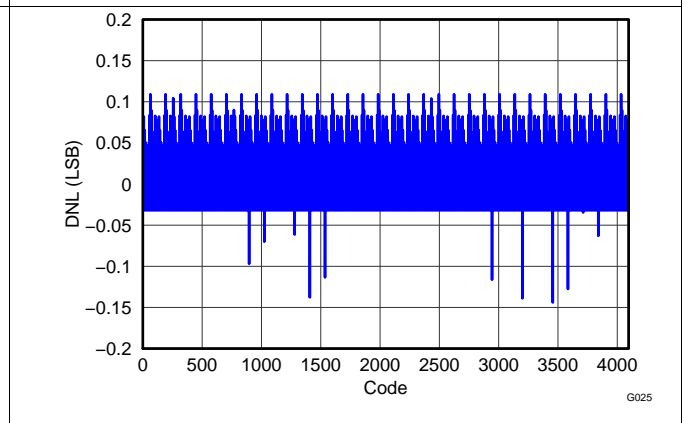


Figure 26. DAC3161 Differential Nonlinearity

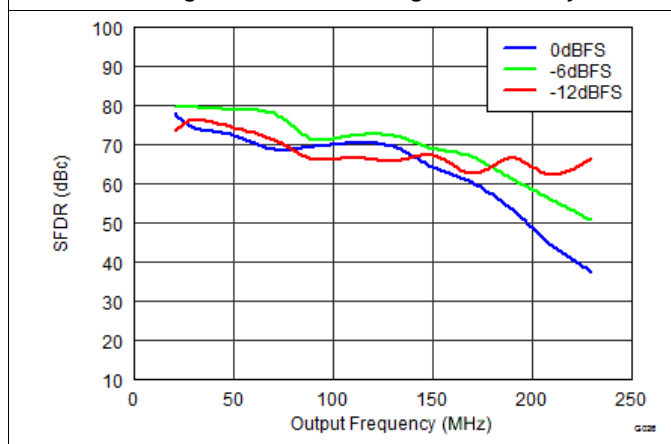


Figure 27. DAC3161 SFDR vs Output Frequency Over Input Scale

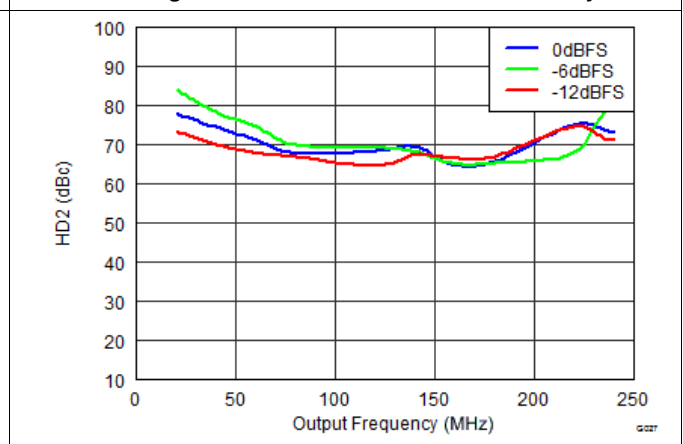


Figure 28. DAC3161 Second-Order Harmonic Distortion vs Output Frequency Over Input Scale

Typical Characteristics (continued)

all plots are at 25°C, nominal supply voltages, $f_{DAC} = 500$ MSPS, 50% clock duty cycle, 0-dBFS input signal and 20-mA full-scale output current (unless otherwise noted)

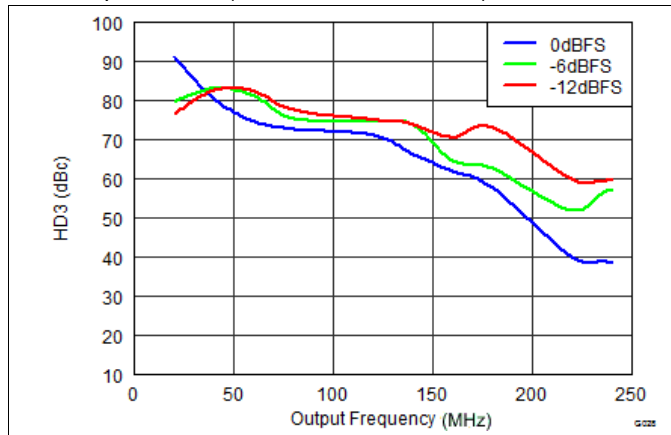


Figure 29. DAC3161 Third-Order Harmonic Distortion vs Output Frequency Over Input Scale

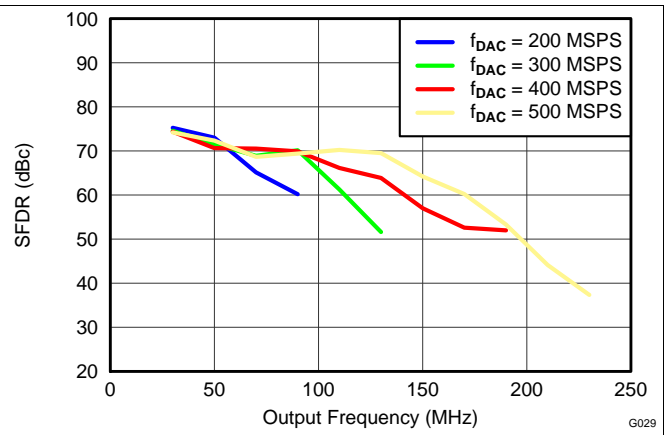


Figure 30. DAC3161 SFDR vs Output Frequency Over f_{DAC}

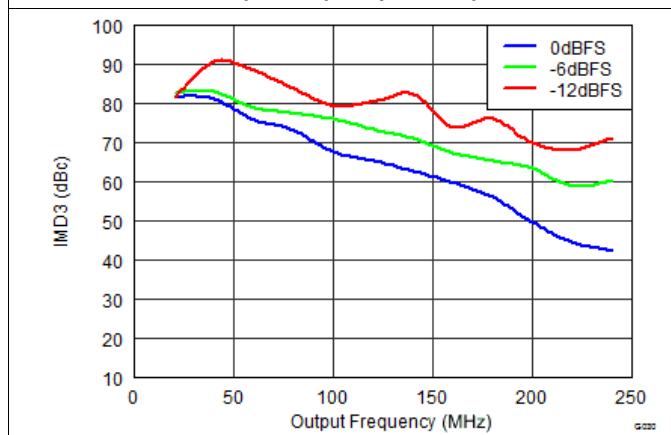


Figure 31. DAC3161 IMD3 vs Output Frequency Over Input Scale

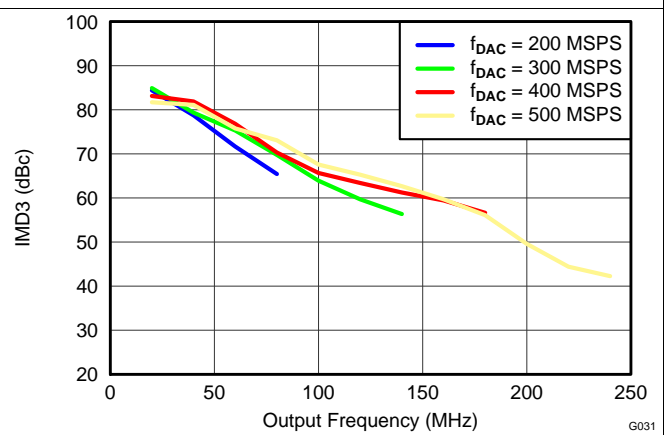


Figure 32. DAC3161 IMD3 vs Output Frequency Over f_{DAC}

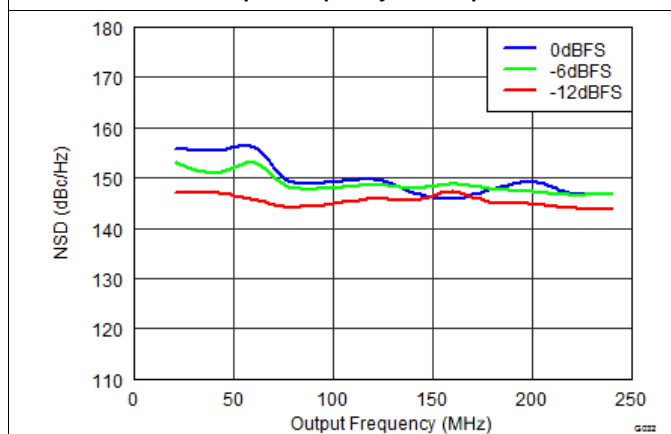


Figure 33. DAC3161 NSD vs Output Frequency Over Input Scale

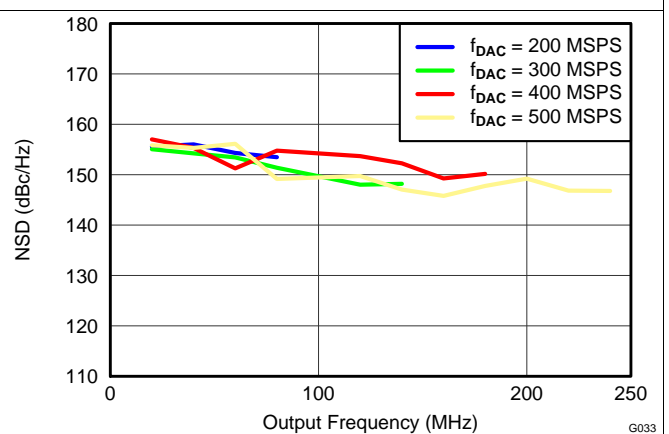
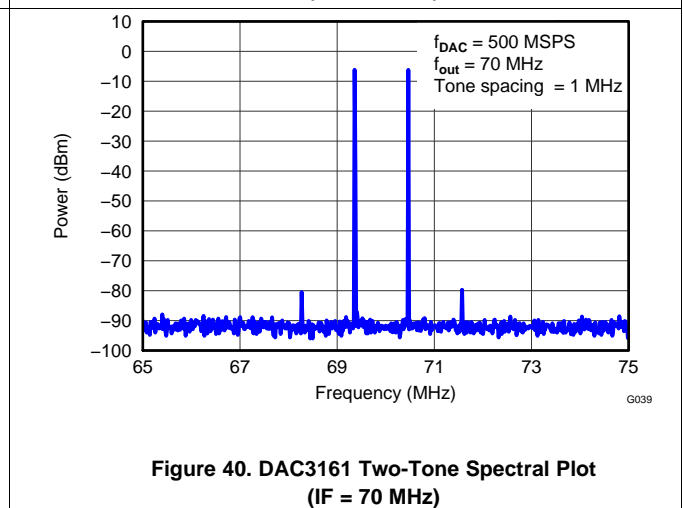
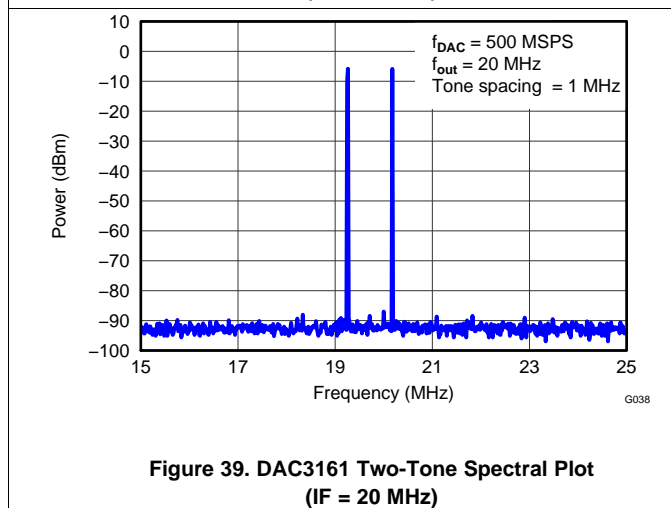
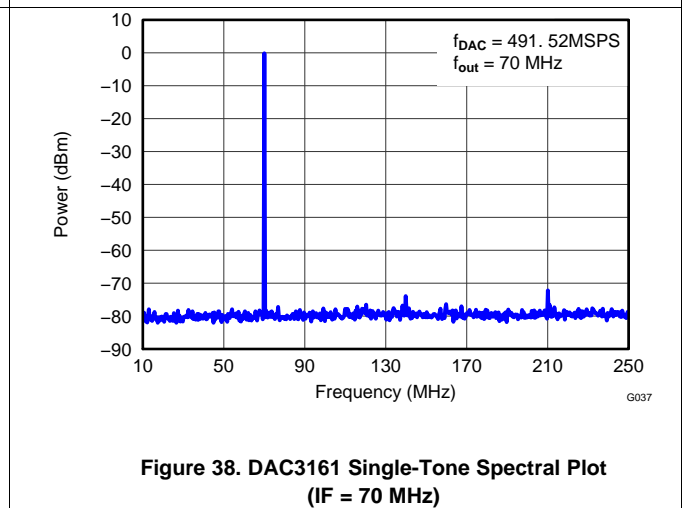
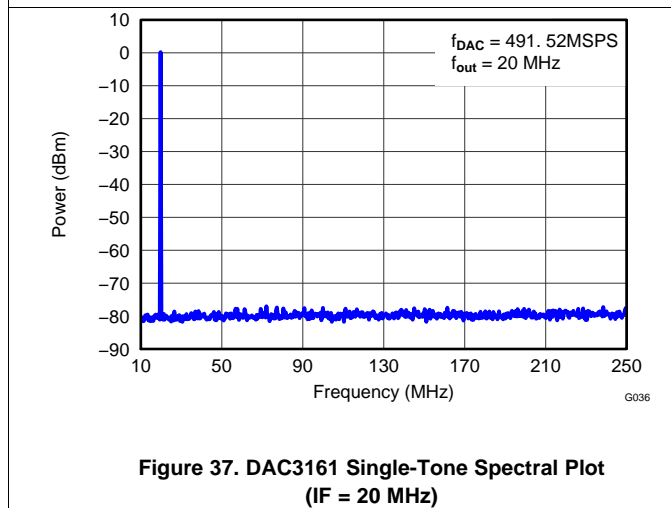
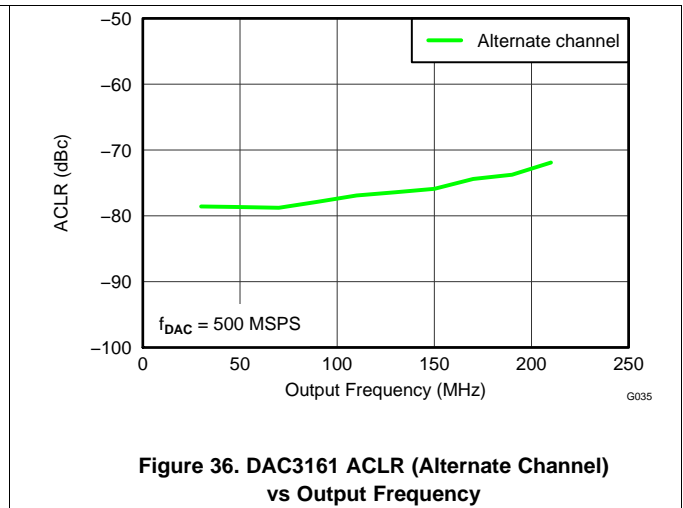
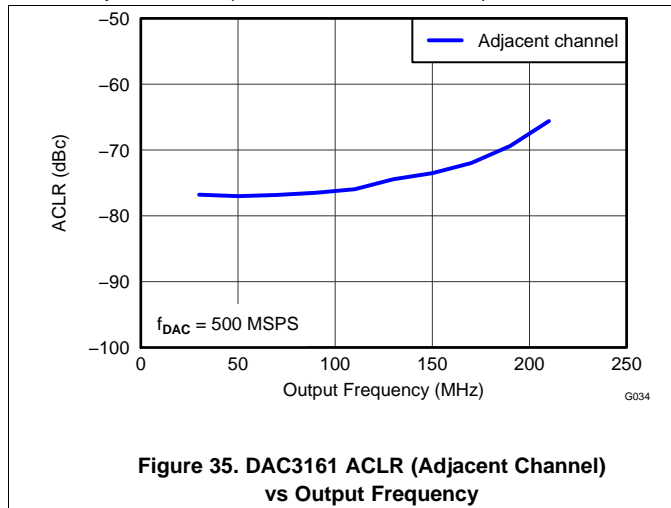


Figure 34. DAC3161 NSD vs Output Frequency Over f_{DAC}

Typical Characteristics (continued)

all plots are at 25°C, nominal supply voltages, $f_{DAC} = 500$ MSPS, 50% clock duty cycle, 0-dBFS input signal and 20-mA full-scale output current (unless otherwise noted)



Typical Characteristics (continued)

all plots are at 25°C, nominal supply voltages, $f_{DAC} = 500$ MSPS, 50% clock duty cycle, 0-dBFS input signal and 20-mA full-scale output current (unless otherwise noted)

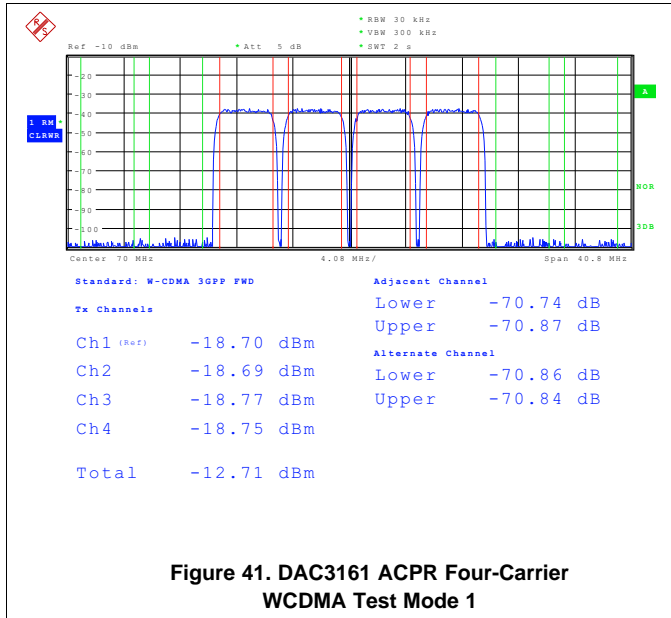


Figure 41. DAC3161 ACPR Four-Carrier WCDMA Test Mode 1

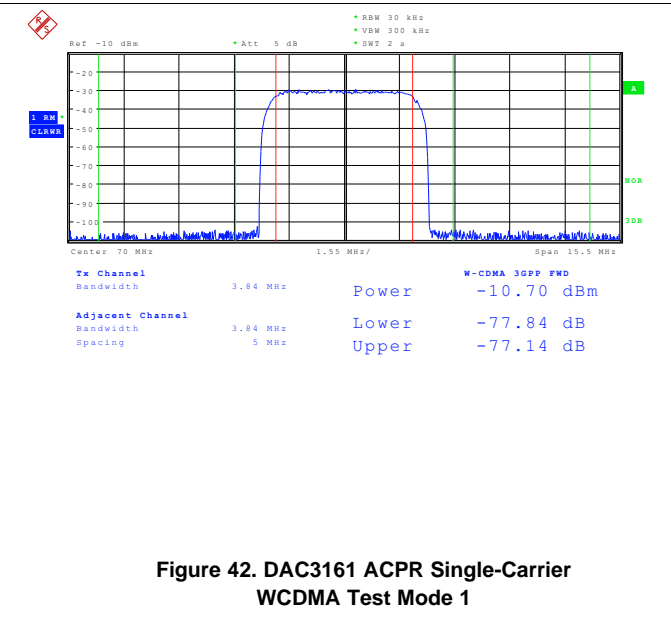


Figure 42. DAC3161 ACPR Single-Carrier WCDMA Test Mode 1

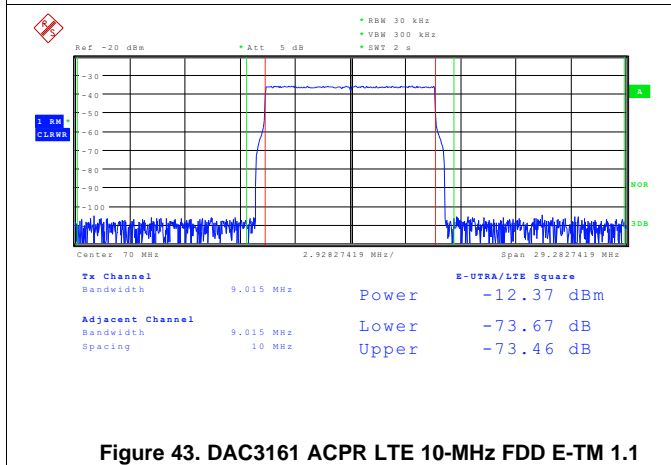


Figure 43. DAC3161 ACPR LTE 10-MHz FDD E-TM 1.1

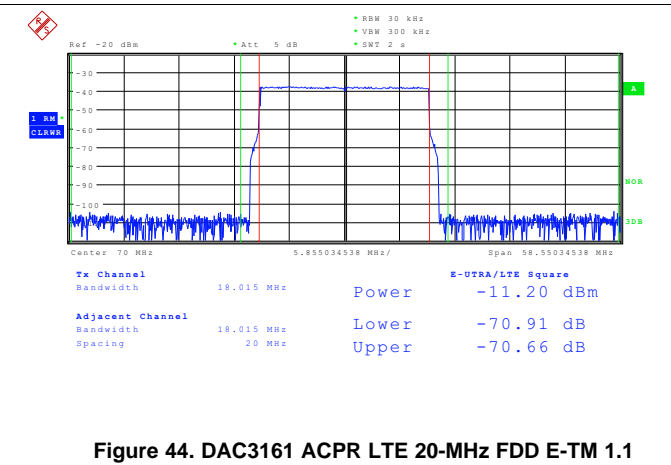


Figure 44. DAC3161 ACPR LTE 20-MHz FDD E-TM 1.1

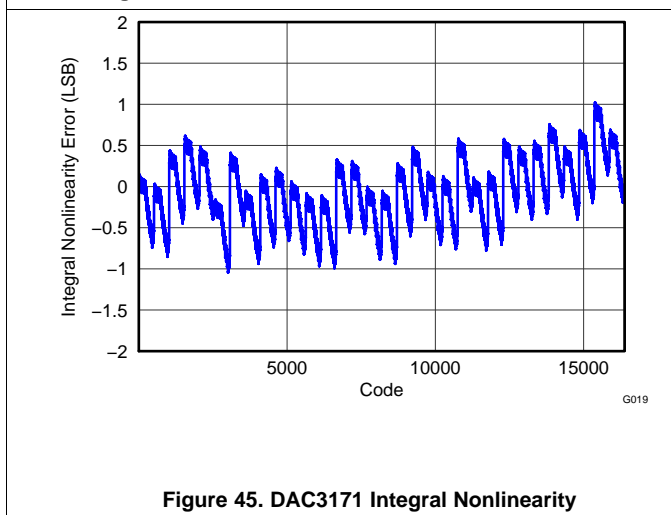


Figure 45. DAC3171 Integral Nonlinearity

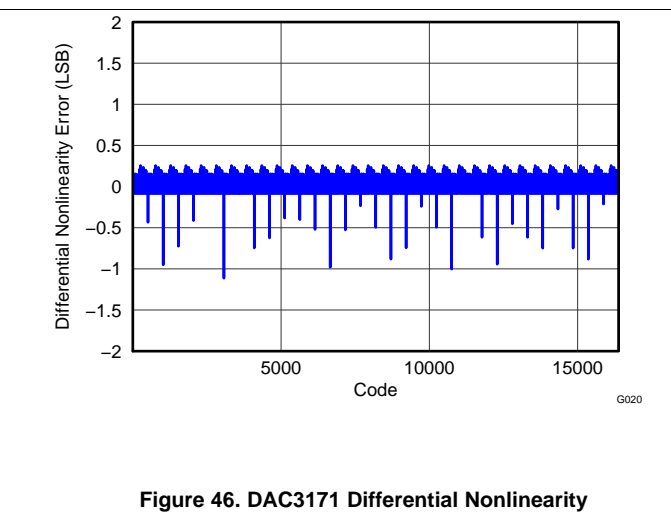


Figure 46. DAC3171 Differential Nonlinearity

Typical Characteristics (continued)

all plots are at 25°C, nominal supply voltages, $f_{DAC} = 500$ MSPS, 50% clock duty cycle, 0-dBFS input signal and 20-mA full-scale output current (unless otherwise noted)

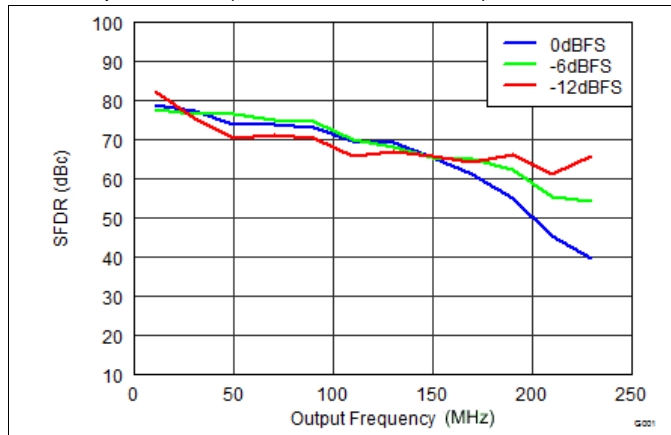


Figure 47. DAC3171 SFDR vs Output Frequency Over Input Scale

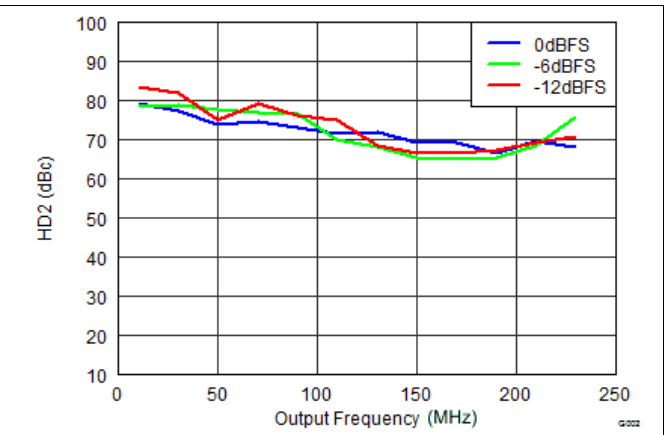


Figure 48. DAC3171 Second-Order Harmonic Distortion vs Output Frequency Over Input Scale

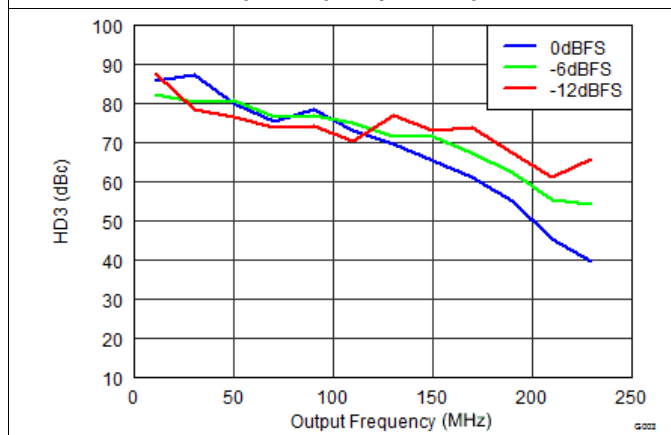


Figure 49. DAC3171 Third-Order Harmonic Distortion vs Output Frequency Over Input Scale

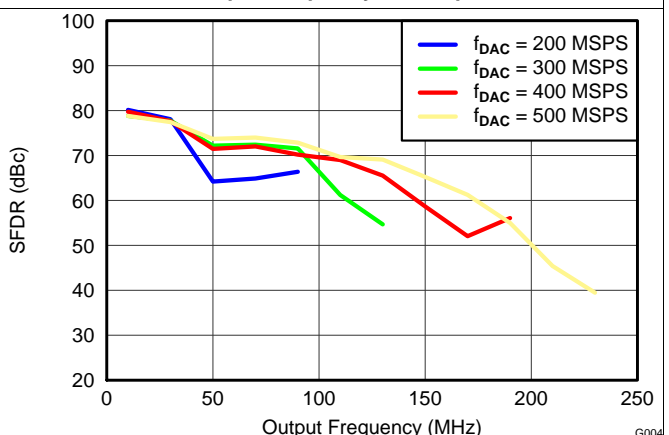


Figure 50. DAC3171 SFDR vs Output Frequency Over f_{DAC}

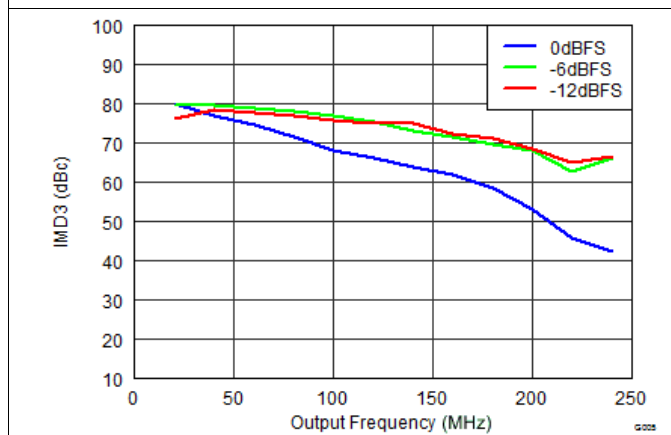


Figure 51. DAC3171 IMD3 vs Output Frequency Over Input Scale

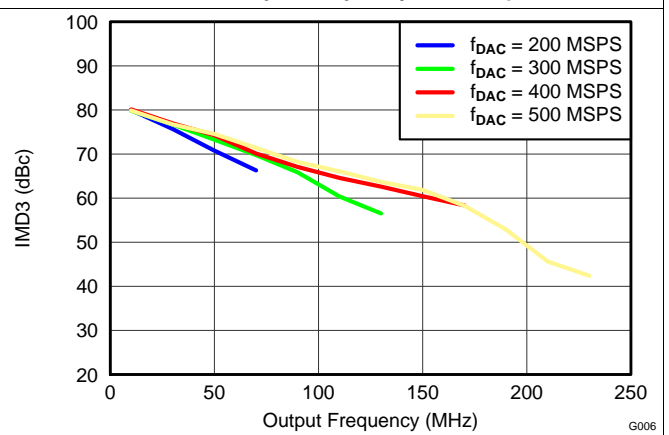


Figure 52. DAC3171 IMD3 vs Output Frequency Over f_{DAC}

Typical Characteristics (continued)

all plots are at 25°C, nominal supply voltages, $f_{DAC} = 500$ MSPS, 50% clock duty cycle, 0-dBFS input signal and 20-mA full-scale output current (unless otherwise noted)

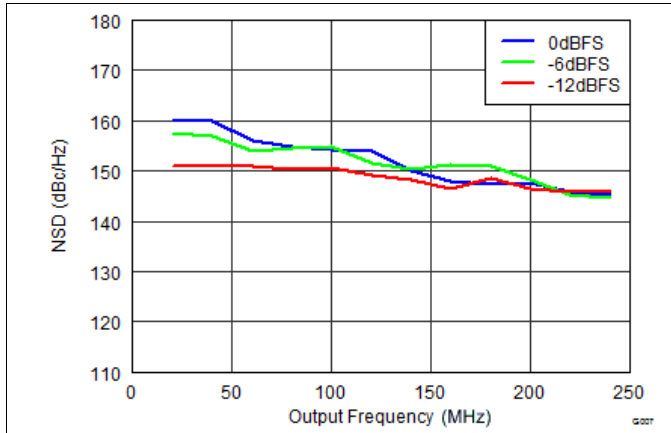


Figure 53. DAC3171 NSD vs Output Frequency Over Input Scale

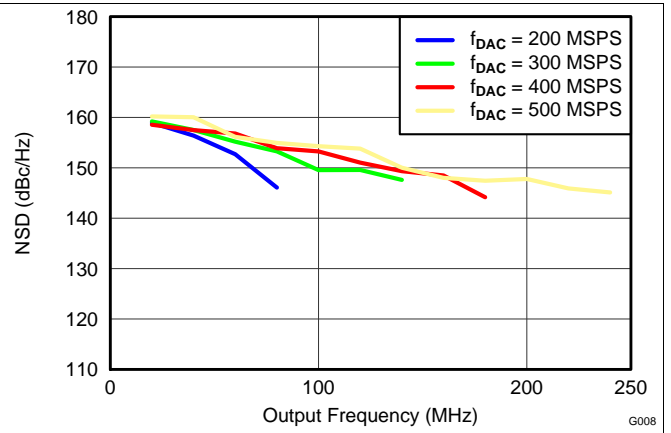


Figure 54. DAC3171 NSD vs Output Frequency Over f_{DAC}

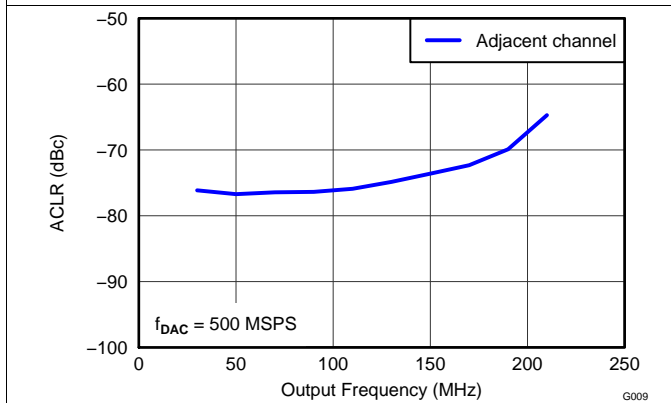


Figure 55. DAC3171 ACLR (Adjacent Channel) vs Output Frequency

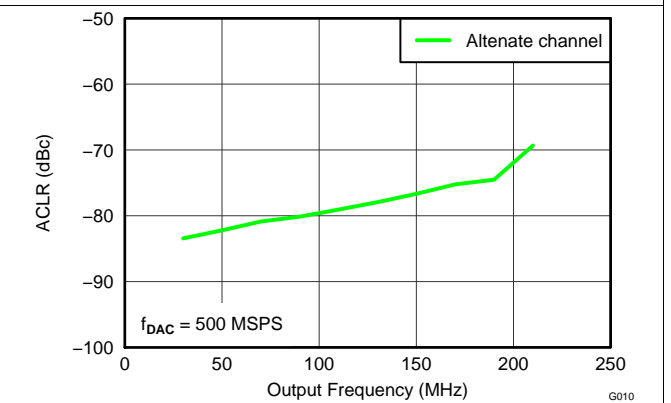


Figure 56. DAC3171 ACLR (Alternate Channel) vs Output Frequency

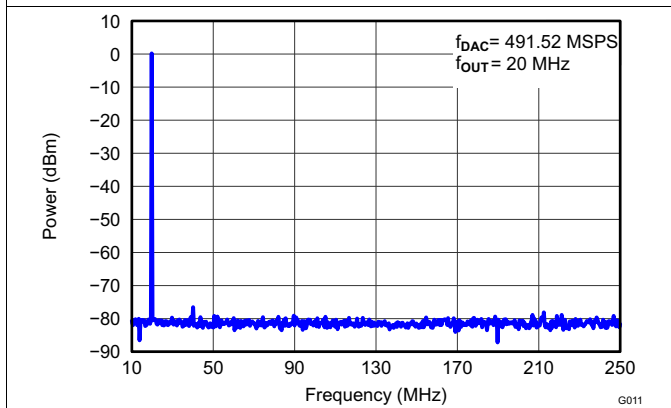


Figure 57. DAC3171 Single-Tone Spectral Plot (IF = 20 MHz)

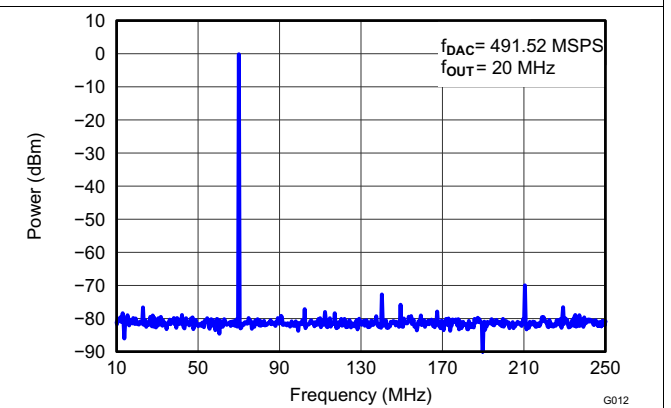


Figure 58. DAC3171 Single-Tone Spectral Plot (IF = 70 MHz)

Typical Characteristics (continued)

all plots are at 25°C, nominal supply voltages, $f_{DAC} = 500$ MSPS, 50% clock duty cycle, 0-dBFS input signal and 20-mA full-scale output current (unless otherwise noted)

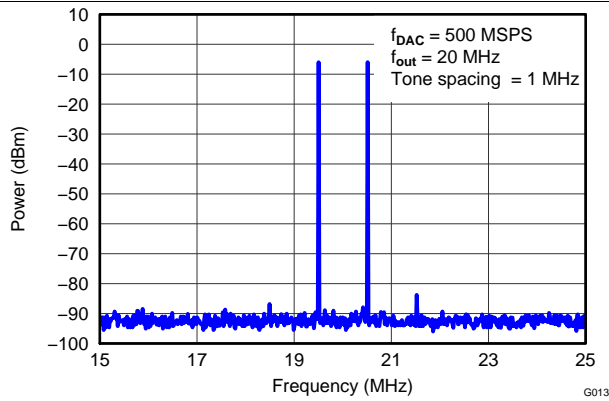


Figure 59. DAC3171 Two-Tone Spectral Plot (IF = 20 MHz)

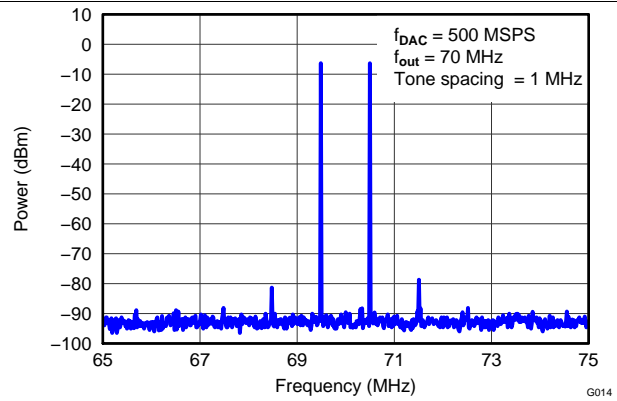


Figure 60. DAC3171 Two-Tone Spectral Plot (IF = 70 MHz)

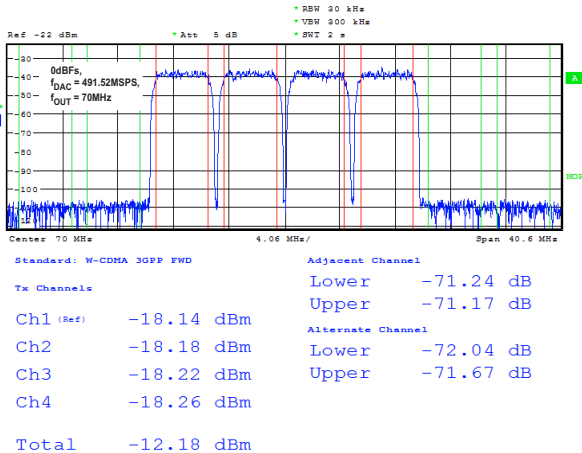


Figure 61. DAC3171 Four-Carrier WCDMA Test Mode 1

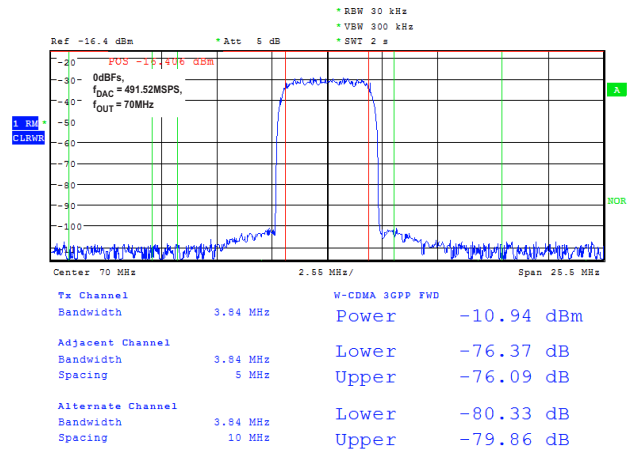


Figure 62. DAC3171 Single-Carrier WCDMA Test Mode 1

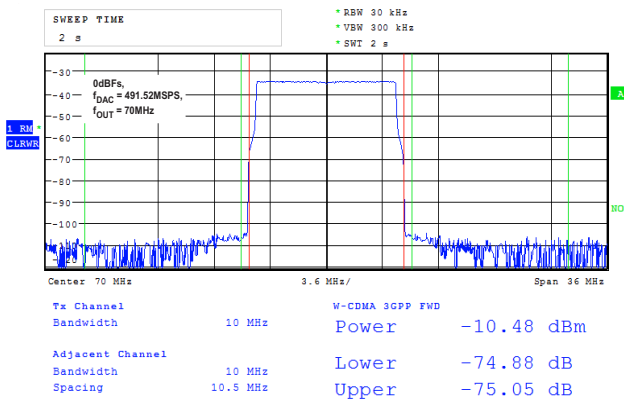


Figure 63. DAC3171 10-MHz Single-Carrier LTE Test Mode 3.1

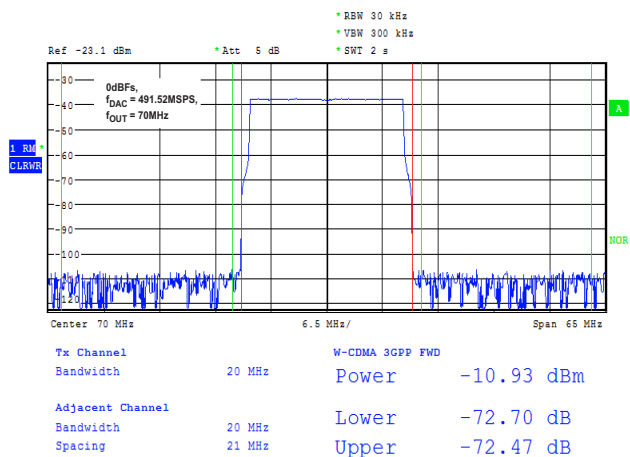
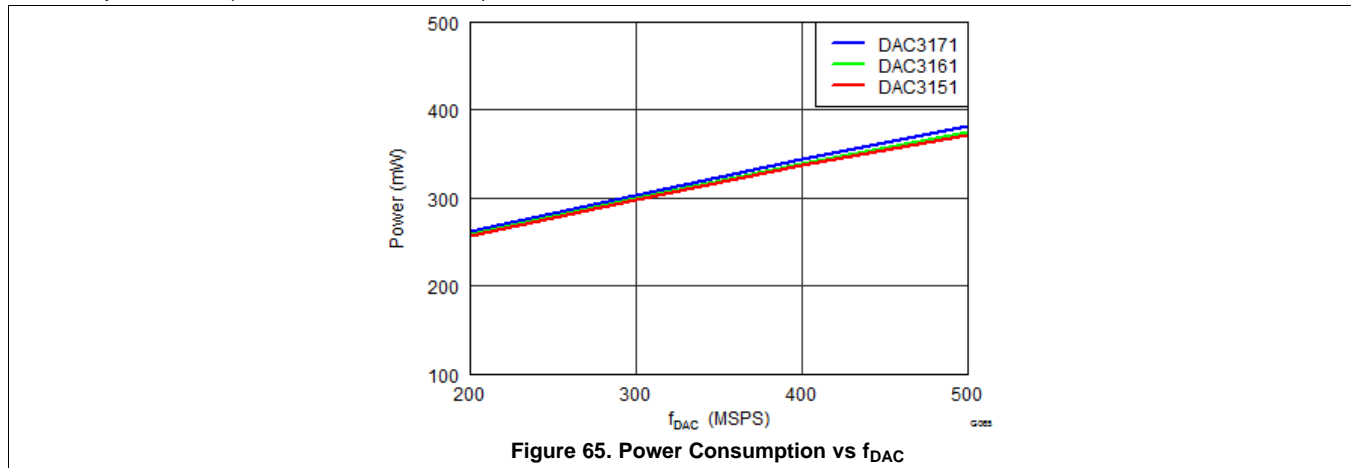


Figure 64. DAC3171 20-MHz Single-Carrier LTE Test Mode 3.1

Typical Characteristics (continued)

all plots are at 25°C, nominal supply voltages, $f_{DAC} = 500$ MSPS, 50% clock duty cycle, 0-dBFS input signal and 20-mA full-scale output current (unless otherwise noted)



7 Detailed Description

7.1 Overview

The DAC3171 is a single channel, 14-bit, 500-MSPS, digital-to-analog converter and uses a 14-bit-wide LVDS digital bus with an input FIFO. The DAC3171 also supports a DDR 7-bit LVDS interface mode.

The DAC3161 is a single channel, 12-bit, 500-MSPS, digital-to-analog converter and uses a 12-bit-wide LVDS digital bus with an input FIFO.

The DAC3151 is a single channel, 10-bit, 500-MSPS, digital-to-analog converter and uses a 10-bit-wide LVDS digital bus with an input FIFO.

These devices (DAC31x1) have separate input data clock and output DAC clock. The FIFO input and output pointers can be synchronized across multiple devices for precise signal synchronization. The DAC outputs are current sourcing and terminate to GND with a compliance range of -0.5 V to $+1$ V. The DAC31x1 are pin compatible with the [DAC31x4](#) family.

7.2 Functional Block Diagrams

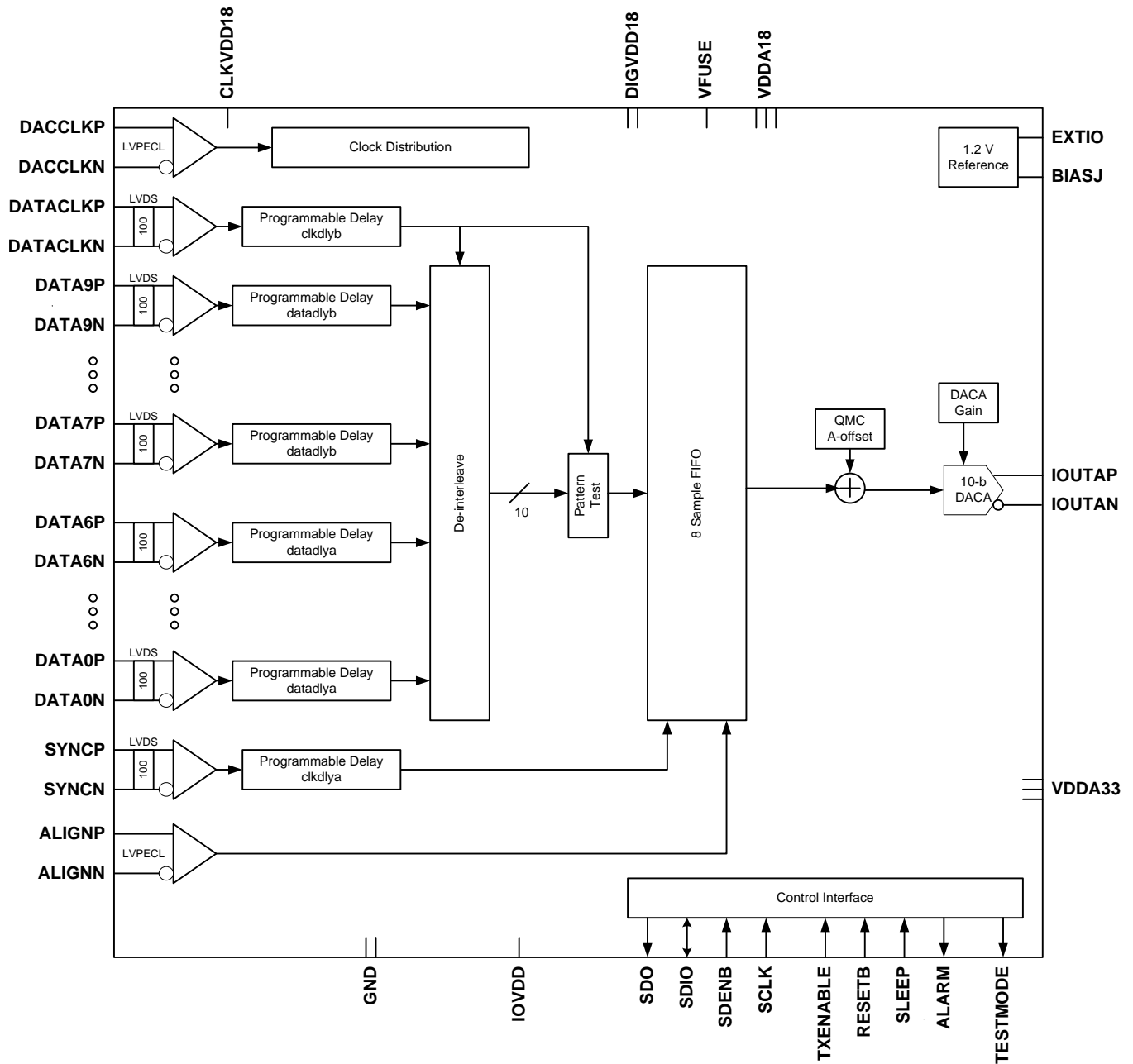


Figure 66. DAC3151 Functional Block Diagram

Functional Block Diagrams (continued)

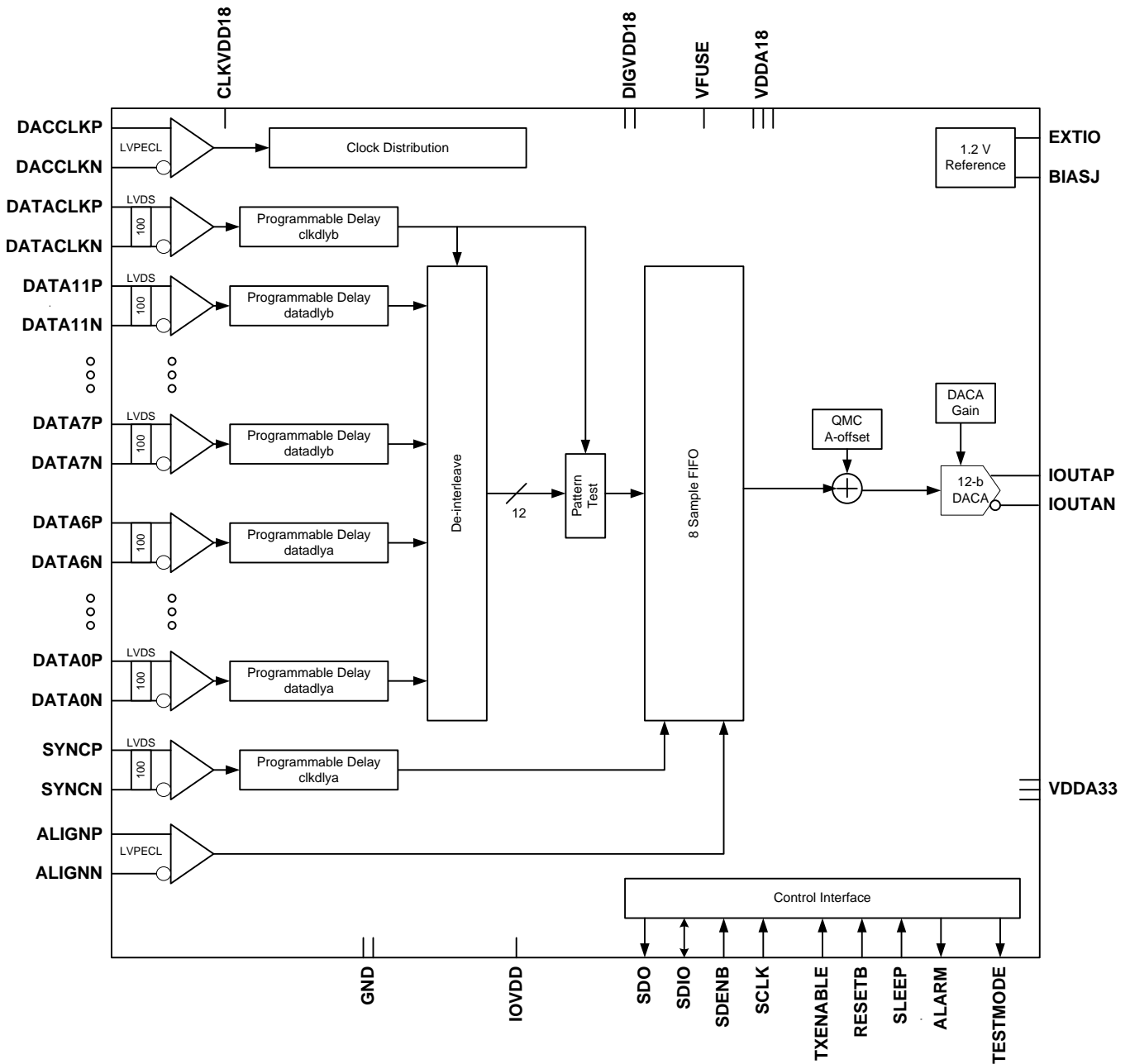


Figure 67. DAC3161 Functional Block Diagram

DAC3151, DAC3161, DAC3171

ZHCSBF0D –AUGUST 2013–REVISED FEBRUARY 2018

www.ti.com.cn

Functional Block Diagrams (continued)

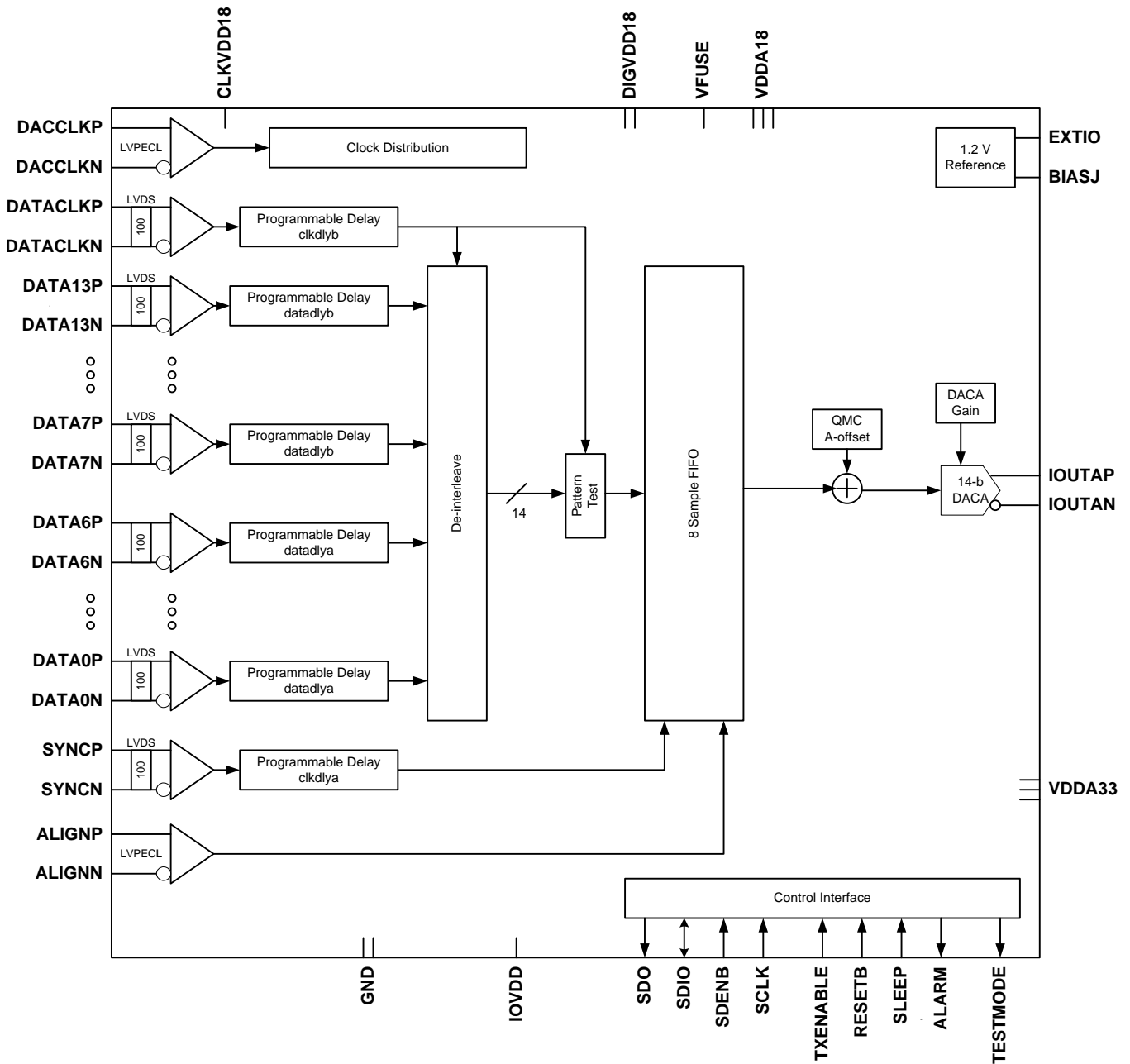


Figure 68. DAC3171 Functional Block Diagram

Functional Block Diagrams (continued)

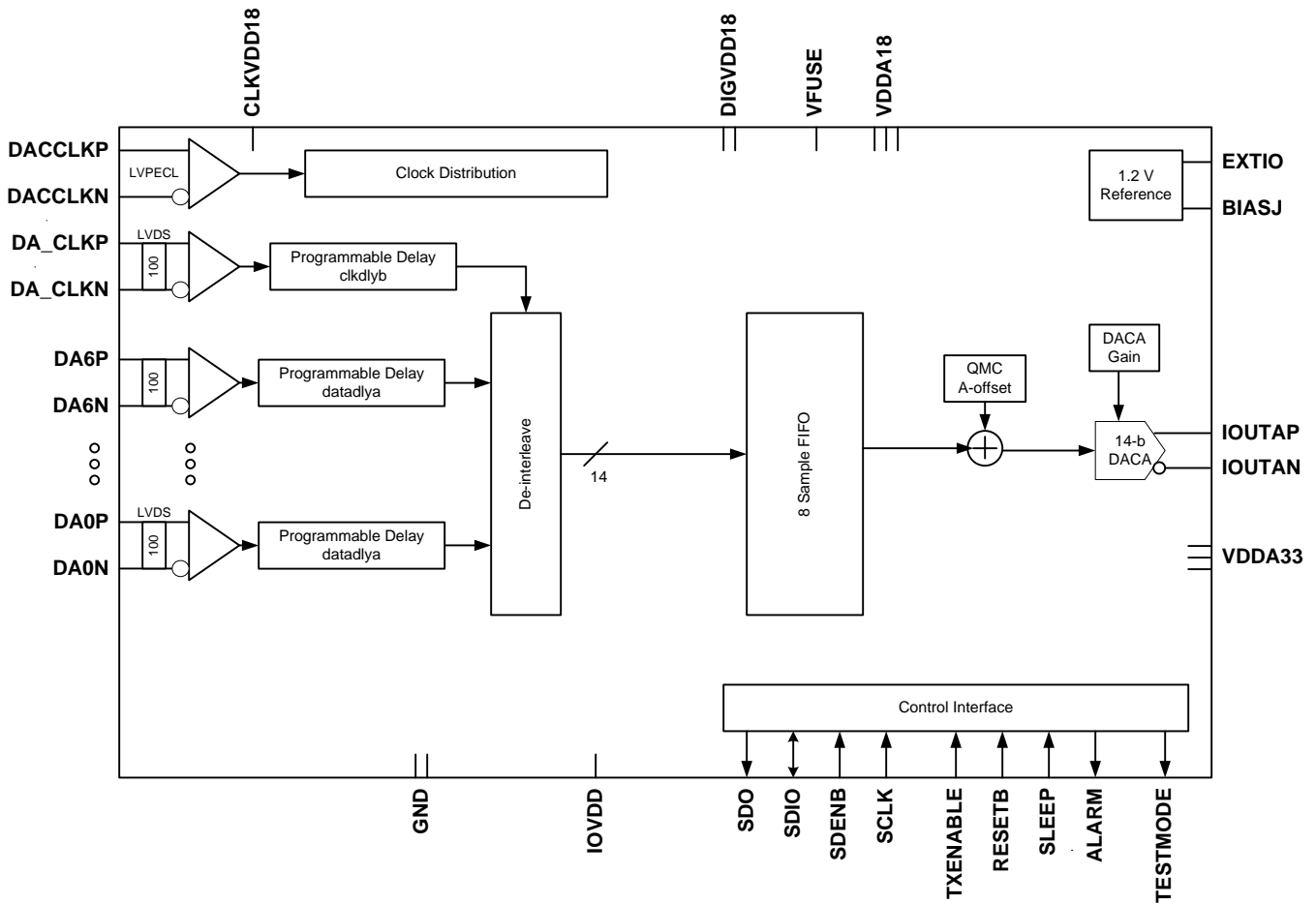


Figure 69. DAC3171 7-Bit Interface Mode

7.3 Feature Description

7.3.1 Data Input Formats

Table 1. DAC3151: 10-Bit Interface Mode

DIFFERENTIAL PAIR (P/N)	BITS	
	DATACLK RISING EDGE	DATACLK FALLING EDGE
D9	A9	–
D8	A8	–
D7	A7	–
D6	A6	–
D5	A5	–
D4	A4	–
D3	A3	–
D2	A2	–
D1	A1	–
D0	A0	–
SYNC	FIFO Write Reset	–

Table 2. DAC3161: 12-Bit Interface Mode

DIFFERENTIAL PAIR (P/N)	BITS	
	DATACLK RISING EDGE	DATACLK FALLING EDGE
D11	A11	–
D10	A10	–
D9	A9	–
D8	A8	–
D7	A7	–
D6	A6	–
D5	A5	–
D4	A4	–
D3	A3	–
D2	A2	–
SYNC	FIFO Write Reset	–

Table 3. DAC3171: 7-Bit Interface Mode

DIFFERENTIAL PAIR (P/N)	BITS	
	DA_CLK RISING EDGE	DA_CLK FALLING EDGE
DA6	A13	A6
DA5	A12	A5
DA4	A11	A4
DA3	A10	A3
DA2	A9	A2
DA1	A8	A1
DA0	A7	A0

Table 4. DAC3171: 14-Bit Interface Mode

DIFFERENTIAL PAIR (P/N)	BITS	
	DATACLK RISING EDGE	DATACLK FALLING EDGE
D13	A13	–
D12	A12	–
D11	A11	–
D10	A10	–
D9	A9	–
D8	A8	–
D7	A7	–
D6	A6	–
D5	A5	–
D4	A4	–
D3	A3	–
D2	A2	–
D1	A1	–
D0	A0	–
SYNC	FIFO Write Reset	–

7.3.2 Serial Interface

The serial port of the DAC31x1 is a flexible serial interface that communicates with industry-standard microprocessors and microcontrollers. The interface provides read and write access to all registers used to define the operating modes of DAC31x1. The interface is compatible with most synchronous transfer formats, and can be configured as a 3 or 4 pin interface by *sif4_ena* in register XYZ. In both configurations, SCLK is the serial interface input clock, and SDENB is serial interface enable. For 3-pin configuration, SDIO is a bidirectional pin for both data in and data out. For 4-pin configuration, SDIO is data in only, and SDO is data out only. Data are input into the device with the rising edge of SCLK. Data are output from the device on the falling edge of SCLK.

Each read and write operation is framed by the serial data enable bar signal (SDENB) asserted low. The first frame byte is the instruction cycle, which identifies the following data transfer cycle as read or write, as well as the 7-bit address to be accessed. Table 5 indicates the function of each bit in the instruction cycle, and is followed by a detailed description of each bit. The data transfer cycle consists of two bytes.

Table 5. Instruction Byte of the Serial interface

Bit	7 (MSB)	6	5	4	3	2	1	0 (LSB)
Description	Read or Write	A6	A5	A4	A3	A2	A1	A0

Read or Write Identifies the following data transfer cycle as a read or write operation. A high indicates a read operation from DAC31x1 and a low indicates a write operation to DAC31x1.

[A6:A0] Identifies the address of the register to be accessed during the read or write operation.

Figure 70 shows the serial interface timing diagram for a DAC31x1 write operation. SCLK is the serial interface clock input to DAC31x1. Serial data enable SDENB is an active low input to DAC31x1. SDIO is serial data in. Input data to DAC31x1 is clocked on the rising edges of SCLK.

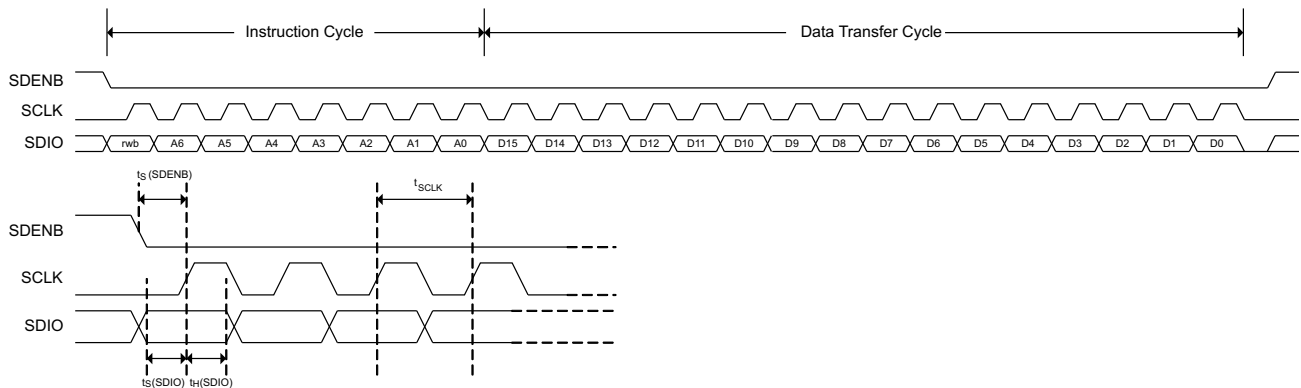


Figure 70. Serial Interface Write Timing Diagram

DAC3151, DAC3161, DAC3171

ZHCSBF0D –AUGUST 2013–REVISED FEBRUARY 2018

www.ti.com.cn

Figure 71 illustrates the serial interface timing diagram for a DAC31x1 read operation. SCLK is the serial interface clock input to DAC31x1. Serial data enable SDENB is an active low input to DAC31x1. SDIO is serial data in during the instruction cycle. In 3-pin configuration, SDIO is data out from the DAC31x1 during the data transfer cycle, while SDO is in a high-impedance state. In 4-pin configuration, both SDIO and SDO are data out from the DAC31x1 during the data transfer cycle. At the end of the data transfer, SDIO and SDO output low on the final falling edge of SCLK until the rising edge of SDENB when SDIO and SDO go to a high-impedance state.

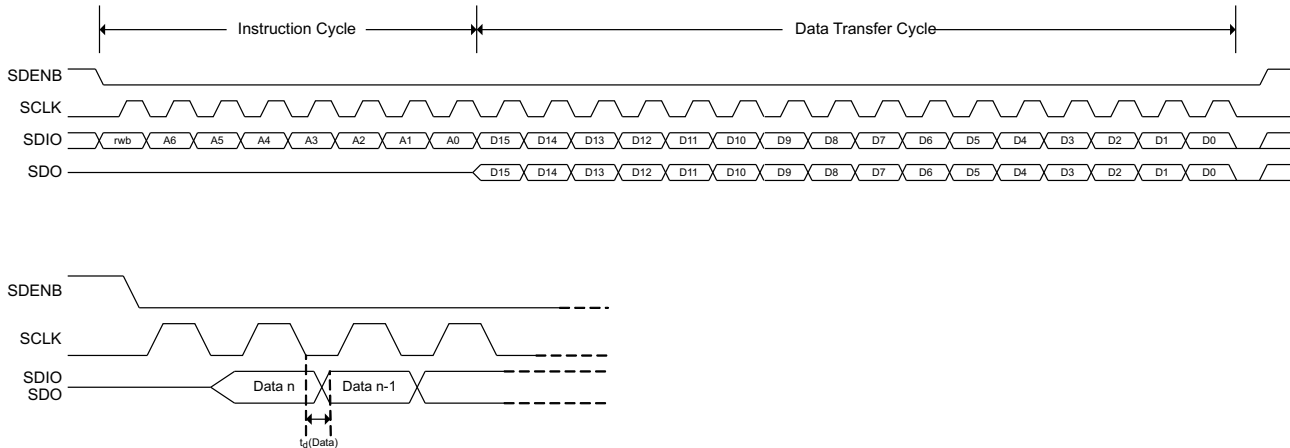


Figure 71. Serial Interface Read Timing Diagram

7.4 Device Functional Modes

7.4.1 Synchronization Modes

There are three modes of syncing included in the DAC31x1: NORMAL Dual Sync, SYNC ONLY, and SIF_SYNC.

- **NORMAL Dual Sync:** The SYNC pin is used to align the input side of the FIFO (write pointers) with the A(0) sample. The ALIGN pin is used to reset the output side of the FIFO (read pointers) to the offset value. Multiple chip alignment can be accomplished with this kind of syncing.
- **SYNC ONLY:** In this mode only the SYNC pin is used to sync both the read and write pointers of the FIFO. There is an asynchronized handoff between the DATACLK and DACCLK when using this mode therefore, it is impossible to accurately align multiple chips closer than 2 T or 3 T.
- **SIF_SYNC:** When neither SYNC nor ALIGN are used, a programmable SYNC pulse can be used to sync the design. However, the same issues as ISTROBE ONLY apply. There is an asynchronized handoff between the serial clock domain and the two sides of the FIFO. As a result of of the asynchronous nature of the SIF_SYNC, it is impossible to align the sync up with any sample at the input. SIF_SYNC mode is the only synchronisation mode supported in the 7-bit interface mode.

NOTE

When ALIGNP or ALIGNN is not used, TI recommends clearing the alignrx_ena register (config1, bit 4), and tie ALIGNP to DIGVDD18 and ALIGNN to GROUND. When SYNCP or SYNCN is not used, clear the register lvdssyncrx_ena (config0, bit3), and the unused SYNCP or SYNCN pins can be left open or tied to GROUND.

7.4.2 Alarm Monitoring

The DAC31x1 includes flexible alarm monitoring that can be used to alert a possible malfunction scenario. All alarm events can be accessed either through the SIP registers or through the ALARM pin. After an alarm is set, the corresponding alarm bit in register config5 must be reset through the serial interface to allow further testing. The set of alarms includes: zero check alarm, FIFO alarms, clock alarms, and pattern checker alarm.

Zero check alarm:

- **Alarm_from_zerock** occurs when the FIFO write pointer has an all zeros pattern. The write pointer is a shift register; therefore, all zeros cause the input point to be stuck until the next sync event. When this alarm triggers, a sync to the FIFO block is required.

FIFO alarms:

- **alarm_from_fifo** occurs when there is a collision in the FIFO pointers or a collision event is close.
- **alarm_fifo_2away** occurs when pointers are within two addresses of each other.
- **alarm_fifo_1away** occurs when pointers are within one address of each other.
- **alarm_fifo_collision** occurs when pointers are equal to each other.

Clock alarms:

- **clock_gone** occurs when either the DACCLK or DATALOCK have been stopped.
- **alarm_dacclk_gone** occurs when the DACCLK has been stopped.
- **alarm_dataclk_gone** occurs when the DATACLK has been stopped.

Pattern checker alarm:

- **alarm_from_iotest** occurs when the input data pattern does not match the pattern key.

To prevent unexpected DAC outputs from propagating into the transmit channel chain, the DAC31x1 includes a feature that disables the outputs when a catastrophic alarm occurs. The catastrophic alarms include FIFO pointer collision, the loss DACCLK, or the loss of DATACLK. When any of these alarms occur, the internal TXenable signal is driven low, causing a zeroing of the data going to the DAC in < 10 T. One caveat is if both clocks stop, the circuit cannot determine clock loss, so no alarms are generated; therefore, no zeroing of output data occurs.

7.5 Programming

7.5.1 Power-Up Sequence

The following startup sequence is recommended to power-up the DAC31x1:

1. Set TXENABLE low to prevent an unknown or undesirable output during the power-up sequence.
2. Supply all 1.8-V voltages (CLKVDD18, DIGVDD18, VDDA18, VFUSE, and possibly IOVDD) and all 3.3-V voltages (VDDA33 and possibly IOVDD). The 1.8-V and 3.3-V supplies can be powered up simultaneously or in any order. There are no specific requirements on the ramp rate for the supplies.
3. Provide all LVPECL inputs: DACCLKP, DACCLKN and the optional ALIGNP, ALIGNN. These inputs can also be provided after the SIF register programming.
4. Toggle the RESETB pin for a minimum of a 25-ns active low pulse duration.
5. Program the SIF registers.
6. Enable transmit of data by asserting the TXENABLE pin.

7.6 Register Map

In the SIF interface, there are three types of registers:

NORMAL: The NORMAL register type allows data to be written and read from. All 16-bits of the data are registered at the same time. There is no synchronizing with an internal clock thus all register writes are asynchronous with respect to internal clocks. There are three subtypes of NORMAL:

AUTOSYNC: A NORMAL register that causes a sync to be generated after the write is finished. These registers are most commonly used for settings such as offset and phase, where there is a word or block setup that extends across multiple registers, and all of the registers must be programmed before any take effect on the circuit. Therefore, the design allows all the registers to be written. When the last register for this block is finished, an autosync is generated telling the mixer to grab all the new SIF values. The autosync occurs on a mixer clock cycle so that there are no metastability errors.

No RESET Value: These are NORMAL registers, but for one reason or another reset value cannot be specified. The reason may be because the register has some read_only bits or some internal logic partially controls the bit values. An example is the SIF_CONFIG6 register, where the bits come from the temperature sensor and the fuses. Depending on which fuses are blown and the temperature of the die, the reset value will be different.

FUSE controlled: While not a type of register, FUSE_controlled may be seen in the default-value column for the register. Fuses will change the default value, and the value shown in the default-value column is for when no fuses are blown.

READ_ONLY: Registers that are internal wires ANDed with the address bus, and then connected to the SIF output data bus.

WRITE_TO_CLEAR: These registers are just like NORMAL registers with one exception. These registers can be written and read; however, when the internal logic asynchronously sets a bit high in one of these registers, that bit stays high until it is written to 0. In this way, interrupts are captured and stay constant until cleared by the user.

Table 6. Register Map

Name	Address	Default	Bit 15 (MSB)	Bit 14	Bit 13	Bit 12	Bit 11	Bit 10	Bit 9	Bit 8	Bit 7	Bit 6	Bit 5	Bit 4	Bit 3	Bit 2	Bit 1	Bit 0 (LSB)		
config0	0x00	0x44FC	qmc_offset_ena	dual_ena	chipwidth (1:0)		rev	twos	sif4_ena	reserved	fifo_ena	alarm_out_ena	alarm_out_pol	alignrx_ena	lvdsyncrx_ena	lvdsdataclk_ena	reserved	synconly_ena		
config1	0x01	0x600E	iotest_ena	reserved	fullword_interface_ena	64cnt_ena	dacclkgone_ena	dataclkgone_end	collision_ena	reserved	daca_compliment	reserved	sif_sync	sif_sync_ena	alarm_2away_ena	alarm_1away_ena	alarm_collision_ena	reserved		
config2	0x02	0x3FFF	reserved	reserved	lvdsdata_ena (13:0)															
config3	0x03	0x0000	datadlya (2:0)			clkdlya (2:0)			datadlyb(2:0)			ckdlyb(2:0)			extref_ena	reserved	dual_ena			
config4	0x04	0x0000	reserved			iotest_results (13:0)														
config5	0x05	0x0000	alarm_from_zerockka	reserved	alarms_from_fifo (2:0)			reserved				alarm_dacclk_gone	alarm_dataclk_gone	clock_gone	alarm_from_iotesta	reserved	reserved			
config6	0x06	0x0000	tempdata (7:0)							fuse_cntl (5:0)								reserved		
config7	0x07	0xFFFF	alarms_mask (15:0)																	
config8	0x08	0x6000	reserved				qmc_offseta (12:0)													
config9	0x09	0x8000	fifo_offset (2:0)				reserved													
config10	0x0A	0xF080	coarse_dac (3:0)				fuse_sleep	reserved	reserved	tsense_sleep	clkrcv_ena	sleepa	sleepb	reserved				reserved		
config11	0x0B	0x1111	reserved				reserved				reserved				reservedspares_west (3:0)					
config12	0x0C	0x3A7A	reserved				iotest_pattern0 (13:0)													
config13	0x0D	0x36B6	reserved				iotest_pattern1 (13:0)													
config14	0x0E	0x2AEA	reserved				iotest_pattern2 (13:0)													
config15	0x0F	0x0545	reserved				iotest_pattern3 (13:0)													
config16	0x10	0x0585	reserved				iotest_pattern4 (13:0)													
config17	0x11	0x0949	reserved				iotest_pattern5 (13:0)													
config18	0x12	0x1515	reserved				iotest_pattern6 (13:0)													
config19	0x13	0x3ABA	reserved				iotest_pattern7 (13:0)													
config20	0x14	0x0000	sifdac_ena	reserved	sifdac (13:0)															
config21	0x15	0xFFFF	sleepcntl (15:0)																	
config22	0x16	0x0000	fa002_data(15:0)																	
config23	0x17	0x0000	fa002_data(31:16)																	
config24	0x18	0x0000	fa002_data(47:32)																	
config25	0x19	0x0000	fa002_data(63:48)																	
config127	0x7F	0x0044	reserved	reserved	reserved	reserved	reserved	reserved	reserved	reserved	titest_voh	titest_vol	vendorid (1:0)		versionid (2:0)					

7.6.1 Register Name: config0 – Address: 0x00, Default: 0x4FC
Table 7. Register Name: config0 – Address: 0x00, Default: 0x4FC

Register Name	Addr (Hex)	Bit	Name	Function	Default Value
config0	0x00	15	qmc_offset_ena	Enable the offset function when asserted.	0
		14	dual_ena	Utilizes both DACs when asserted.	0 FUSE controlled
		13:12	chipwidth	Programmable bits for setting the input interface width. 00: all 14 bits are used 01: upper 12 bits are used 10: upper 10 bits are used 11: upper 10 bits are used	00
		11	rev	Reverses the input bits. When using the 7bit interface, this reverse each 7-bit input, however when using the 14-bit interface, all 14-bits are reversed as one word.	0
		10	twos	When asserted, this bit tells the chip to presume 2's complement data is arriving at the input. Otherwise offset binary is presumed.	1
		9	sif4_ena	When asserted the SIF interface becomes a 4 pin interface. This bit has a lower priority than the dieid_ena bit.	0
		8	reserved	reserved	0
		7	fifo_ena	When asserted, the FIFO is absorbing the difference between INPUT clock and DAC clock. If it is not asserted then the FIFO buffering is bypassed but the reversing of bits and handling of offset binary input is still available. NOTE: When the FIFO is bypassed, the DACCLK and DATACLK must be aligned or there may be timing errors; not recommended for actual application use.	1
		6	alarm_out_ena	When asserted the pin alarm becomes an output instead of a tri-stated pin.	1
		5	alarm_out_pol	This bit changes the polarity of the ALARM signal. (0=negative logic, 1=positive logic)	1
		4	alignrx_ena	When asserted the ALIGN pin receiver is powered up. NOTE: It is recommended to clear this bit when ALIGNP/N are not used (dual bus mode, and SYNC ONLY and SIF_SYNC modes in single bus mode).	1
		3	lvdsyncrx_ena	When asserted the SYNC pin receiver is powered up. NOTE: It is recommended to clear this bit when SYNC P/N are not used (dual bus mode, and SIF_SYNC mode in single bus mode.)	1
		2	lvdsdataclk_ena	When asserted the DATACLK pin receiver is powered up.	1
		1	reserved	reserved	0
0	synconly_ena	When asserted, the chip is put into the SYNC ONLY mode where the SYNC pin is used as the sync input for both the front and back of the FIFO.	0		

7.6.2 Register Name: config1 – Address: 0x01, Default: 0x600E
Table 8. Register Name: config1 – Address: 0x01, Default: 0x600E

Register Name	Addr (Hex)	Bit	Name	Function	Default Value
config1	0x01	15	iotest_ena	Turns on the io-testing circuitry when asserted. This is the circuitry that will compare an 8 sample input pattern to SIF programmed registers to make sure the data coming into the chip meets setup and hold requirements. If this bit is a 0, then the clock to this circuitry is turned off for power savings. NOTE: Sample 0 should be aligned with the rising edge of SYNC.	0
		14	reserved	reserved	1
		13	fullwordinterface_ena	When asserted, the input interface is changed to use the full 14-bits for each word, instead of dual 8-bit buses for two half words. Note: fixed to 1 for the DAC3151 and DAC3161.	1
		12	64cnt_ena	This bit enables the resetting of the alarms after 64 good samples with the goal of removing unnecessary errors. For instance on a lab board, when checking the setup/hold through IO TEST, there may initially be errors, but once the test is up and running everything works. Setting this bit removes the need for a SIF write to clear the alarm register.	0
		11	dacclkgone_ena	This bit allows the DACCLK gone signal from the clock monitor to be used to shut the output off.	0
		10	dataclkgone_ena	This bit allows the DATACLK gone signal from the clock monitor to be used to shut the output off.	0
		9	collision_ena	This bit allows the collision alarm from the FIFO to shut the output off	0
		8	reserved	reserved.	0
		7	daca_compliment	When asserted, the output to the DACA is complimented. This setting allows the user of the chip to effectively change the + and – designations of the DAC output pins.	0
		6	reserved	reserved	0
		5	sif_sync	This bit is the SIF_SYNC signal. Whatever is programmed into this bit is used as the chip sync when SIF_SYNC mode is enabled. Design is sensitive to rising edges, so programming from 0 → 1 is when the sync pulse is generated. 1 → 0 has no effect.	0
		4	sif_sync_ena	When asserted, enable SIF_SYNC mode.	0
		3	alarm_2away_ena	When asserted, alarms from the FIFO that represent the pointers being 2 away are enabled	1
		2	alarm_1away_ena	When asserted, alarms from the FIFO that represent the pointers being 1 away are enabled	1
		1	alarm_collision_ena	When asserted, the collision of FIFO pointers causes an alarm to be generated	1
		0	reserved	reserved	0

7.6.3 Register Name: config2 – Address: 0x02, Default: 0x3FFF
Table 9. Register Name: config2 – Address: 0x02, Default: 0x3FFF

Register Name	Addr (Hex)	Bit	Name	Function	Default Value
config2	0x02	15	reserved	reserved.	0
		14	reserved	reserved.	0
		13:0	lvdsdata_ena	These 14 bits are individual enables for the 14 input pin receivers. Note: for the DAC3171 7-bit input interface mode, turn off bits(6:0).	0x3FFF

DAC3151, DAC3161, DAC3171

ZHCSBF0D –AUGUST 2013–REVISED FEBRUARY 2018

www.ti.com.cn
7.6.4 Register Name: config3 – Address: 0x03, Default: 0x0000
Table 10. Register Name: config3 – Address: 0x03, Default: 0x0000

Register Name	Addr (Hex)	Bit	Name	Function	Default Value
config3	0x03	15:13	datadlya	Controls the delay of the D[13:7]P/N inputs through the LVDS receivers for single bus mode; controls the delay of the DA[6:0]P/N inputs through the LVDS receivers for dual bus mode (only applicable to DAC3171). 0= no additional delay and each LSB adds a nominal 80ps.	000
		12:10	clkdlya	Controls the delay of the SYNCP/N inputs through the LVDS receivers for single bus mode; controls the delay of the DA_CLKP/N inputs through the LVDS receivers for dual bus mode (only applicable to DAC3171). 0= no additional delay and each LSB adds a nominal 80ps.	000
		9:7	datadlyb	Controls the delay of the D[6:0]P/N inputs through the LVDS receivers for single bus mode; controls the delay of the DB[6:0]P/N inputs through the LVDS receivers for dual bus mode (only applicable to DAC3171).	000
		6:4	clkdlyb	Controls the delay of the DATACLKP/N inputs through the LVDS receivers for single bus mode; controls the delay of the DB_CLKP/N inputs through the LVDS receivers for dual bus mode (only applicable to DAC3171). 0= no additional delay and each LSB adds a nominal 80ps.	000
		3	extref_ena	Enable external reference for the DAC when set.	0
		2:1	reserved	reserved	00
		0	dual_ena	When this bit is set, pins 6,7 become the DATACLK for the data into the FIFO while in 7-bit DDR mode for DAC3171. When this bit is not set, pins 24,25 become the DATACLK for the data into the FIFO. While in full-word interface mode, leave this bit at 0.	0

7.6.5 Register Name: config4 – Address: 0x04, Default: 0x0000
Table 11. Register Name: config4 – Address: 0x04, Default: 0x0000

Register Name	Addr (Hex)	Bit	Name	Function	Default Value
config4 WRITE TO CLEAR/ No RESET value	0x04	15:14	reserved	reserved	00
		13:0	iotest_results	The values of these bits tell which bit in the input word failed during the io-test pattern comparison.	0x0000

7.6.6 Register Name: config5 – Address: 0x05, Default: 0x0000
Table 12. Register Name: config5 – Address: 0x05, Default: 0x0000

Register Name	Addr (Hex)	Bit	Name	Function	Default Value
config5 WRITE TO CLEAR	0x05	15	alarm_from_ zerochka	When this bit is asserted the FIFOA write pointer has an all zeros pattern in it. Since this pointer is a shift register, all zeros will cause the input point to be stuck until the next sync. The result could be a repeated 8T pattern at the output if the mixer is off and no syncs occur. Check for this error will tell the user that another sync is necessary to restart the FIFO write pointer.	0
		14	reserved	reserved.	0
		13:11	alarms_from_ fifoa	These bits report the FIFO A pointer status. 000: All fine 001: Pointers are 2 away 01X: Pointers are 1 away 1XX: FIFO Pointer collision	000
		10:8	reserved	reserved	0
		7	alarm_dacclk_ gone	Bit gets asserted when the DACCLK has been stopped long for enough cycles to be caught. The number of cycles varies with interpolation.	0
		6	alarm_dataclk_ gone	Bit gets asserted when the DATACLK has been stopped long for enough cycles to be caught. The number of cycles varies with interpolation.	0
		5	clock_gone	This bit gets set when either alarm_dacclk_gone or alarm_dataclk_gone are asserted. It controls the output of the CDRV_SER block. When high, the CDRV_SER block will output 0x8000 for each output connected to a DAC. The bit must be written to '0' for CDRV_SER outputs to resume normal operation.	0
		4	alarm_from_ iotesta	This is asserted when the input data pattern does not match the pattern in the iotest_pattern registers.	0
		3	reserved	reserved.	0
		2	reserved	reserved	0
		1	reserved	reserved	0
0	reserved	reserved	0		

DAC3151, DAC3161, DAC3171

ZHCSBF0D –AUGUST 2013–REVISED FEBRUARY 2018

www.ti.com.cn
7.6.7 Register Name: config6 – Address: 0x06, Default: 0x0010(DAC3171); 0x0094(DAC3161); 0x0098(DAC3151)
Table 13. Register Name: config6 – Address: 0x06, Default: 0x0010(DAC3171); 0x0094(DAC3161); 0x0098(DAC3151)

Register Name	Addr (Hex)	Bit	Name	Function	Default Value
config6 No RESET Value	0x06	15:8	tempdata	This the output from the chip temperature sensor. NOTE: when reading these bits the SIF interface must be extremely slow, 1MHz range.	0x00
		7:2	fuse_cntl	These are the values of the blown fuses and are used to determine the available functionality in the chip. These bits are READ_ONLY, and allow the user to check what features have been disabled in the device. bit5 = 1: Forces Full Word interface bit4 = 0: reserved bit3 = 0: reserved bit2 = 1: Forces Single DAC mode. Note: This does not force the channel B in sleep mode. In order to do so, user needs to program the sleepb SPI bit (config10, bit 5) to 1. bit1:0 : Forces a different bits size: 00: 14 bit 01: 12 bit 10: 10 bit 11: 10 bit	0x10 for DAC3171; 0x94 for DAC3161; 0x98 for DAC3151; FUSE controlled
		1	reserved	reserved	0
		0	reserved	reserved	0

7.6.8 Register Name: config7 – Address: 0x07, Default: 0xFFFF
Table 14. Register Name: config7 – Address: 0x07, Default: 0xFFFF

Register Name	Addr (Hex)	Bit	Name	Function	Default Value
config7	0x07	15:0	alarms_mask	Each bit is used to mask an alarm. Assertion masks the alarm: bit15 = alarm_mask_zerocka bit14 = alarm_mask_zerockb bit13 = alarm_mask_fifo_a_collision bit12 = alarm_mask_fifo_a_1away bit11 = alarm_mask_fifo_a_2away bit10 = alarm_mask_fifo_b_collision bit9 = alarm_mask_fifo_b_1away bit8 = alarm_mask_fifo_b_2away bit7 = alarm_mask_dacclk_gone bit6 = alarm_mask_dataclk_gone bit5 = Masks the signal which turns off the DAC output when a clock or collision occurs. This bit has no effect on the PAD_ALARM output. bit4 = alarm_mask_iotesta bit3 = alarm_mask_iotestb bit2 = bit1 = bit0 =	0xFFFF

7.6.9 Register Name: config8 – Address: 0x08, Default: 0x6000
Table 15. Register Name: config8 – Address: 0x08, Default: 0x6000

Register Name	Addr (Hex)	Bit	Name	Function	Default Value
config8	0x08	15:13	reserved	reserved	011
		12:0	qmc_offseta	The DAC A offset correction. The offset is measured in DAC LSBs.	0x0000

7.6.10 Register Name: config9 – Address: 0x09, Default: 0x8000
Table 16. Register Name: config9 – Address: 0x09, Default: 0x8000

Register Name	Addr (Hex)	Bit	Name	Function	Default Value
config9 AUTO SYNC	0x09	15:13	fifo_offset	This is the starting point for the READ_POINTER in the FIFO block. The READ_POINTER is set to this location when a sync occurs on the DACCLK side of the FIFO.	100
		12:0	reserved	reserved	0x0000

7.6.11 Register name: config10 – Address: 0x0A, Default: 0xF080
Table 17. Register Name: config10 – Address: 0x0A, Default: 0xF080

Register Name	Addr (Hex)	Bit	Name	Function	Default Value
Config10	0x0A	15:12	coarse_dac	Scales the output current is 16 equal steps. $\frac{V_{refO}}{R_{bias}} \times (\text{mem_coarse_daca} + 1)$	1111
		11	fuse_sleep	Put the fuses to sleep when set high.	0
		10	reserved	reserved	0
		9	reserved	reserved	0
		8	tsense_sleep	When asserted the temperature sensor is put to sleep.	0
		7	clkrecv_ena	Turn on the DAC CLOCK receiver block when asserted.	1
		6	sleepa	When asserted DACA is put to sleep.	0
		5	sleepb	When asserted DACB is put to sleep. Note: This bit needs to be programmed to 1 to save additional power.	0
4:0	reserved	reserved	00000		

7.6.12 Register Name: config11 – Address: 0x0B, Default: 0x1111
Table 18. Register Name: config11 – Address: 0x0B, Default: 0x1111

Register Name	Addr (Hex)	Bit	Name	Function	Default Value
config11	0x0B	15:12	reserved	reserved	0001
		11:8	reserved	reserved	0001
		7:4	reserved	reserved	0001
		3:0	reserved	reserved	0001

7.6.13 Register Name: config12 – Address: 0x0C, Default: 0x3A7A
Table 19. Register Name: config12 – Address: 0x0C, Default: 0x3A7A

Register Name	Addr (Hex)	Bit	Name	Function	Default Value
config12	0x0C	15:14	reserved	reserved	00
		13:0	iotest_pattern0	This is dataword0 in the IO test pattern. It is used with the seven other words to test the input data. (** NOTE **) This word should be aligned with the rising edge of SYNC when testing the IO interface.	0x3A7A

7.6.14 Register Name: config13 – Address: 0x0D, Default: 0x36B6
Table 20. Register Name: config13 – Address: 0x0D, Default: 0x36B6

Register Name	Addr (Hex)	Bit	Name	Function	Default Value
config13	0x0D	15:14	reserved	reserved	00
		13:0	iotest_pattern1	This is dataword1 in the IO test pattern. It is used with the seven other words to test the input data.	0x36B6

7.6.15 Register Name: config14 – Address: 0x0E, Default: 0x2AEA
Table 21. Register name: config14 – Address: 0x0E, Default: 0x2AEA

Register Name	Addr (Hex)	Bit	Name	Function	Default Value
config14	0x0E	15:14	reserved	reserved	00
		13:0	iotest_pattern2	This is dataword2 in the IO test pattern. It is used with the seven other words to test the input data.	0x2AEA

7.6.16 Register name: config15 – Address: 0x0F, Default: 0x0545
Table 22. Register Name: config15 – Address: 0x0F, Default: 0x0545

Register Name	Addr (Hex)	Bit	Name	Function	Default Value
config15	0x0F	15:14	reserved	reserved	00
		13:0	iotest_pattern3	This is dataword3 in the IO test pattern. It is used with the seven other words to test the input data.	0x0545

7.6.17 Register Name: config16 – Address: 0x10, Default: 0x0585
Table 23. Register Name: config16 – Address: 0x10, Default: 0x0585

Register Name	Addr (Hex)	Bit	Name	Function	Default Value
config16	0x10	15:14	reserved	reserved	00
		13:0	iotest_pattern4	This is dataword4 in the IO test pattern. It is used with the seven other words to test the input data.	0x0585

7.6.18 Register Name: config17 – Address: 0x11, Default: 0x0949
Table 24. Register Name: config17 – Address: 0x11, Default: 0x0949

Register Name	Addr (Hex)	Bit	Name	Function	Default Value
config17	0x11	15:14	reserved	reserved	00
		13:0	iotest_pattern5	This is dataword5 in the IO test pattern. It is used with the seven other words to test the input data.	0x0949

7.6.19 Register Name: config18 – Address: 0x12, Default: 0x1515
Table 25. Register Name: config18 – Address: 0x12, Default: 0x1515

Register Name	Addr (Hex)	Bit	Name	Function	Default Value
config18	0x12	15:14	reserved	reserved	00
		13:0	iotest_pattern5	This is dataword6 in the IO test pattern. It is used with the seven other words to test the input data.	0x1515

7.6.20 Register Name: config19 – Address: 0x13, Default: 0x3ABA
Table 26. Register Name: config19 – Address: 0x13, Default: 0x3ABA

Register Name	Addr (Hex)	Bit	Name	Function	Default Value
config19	0x13	15:14	reserved	reserved	00
		13:0	iotest_pattern7	This is dataword7 in the IO test pattern. It is used with the seven other words to test the input data.	0x3ABA

7.6.21 Register Name: config20– Address: 0x14, Default: 0x0000
Table 27. Register Name: config20– Address: 0x14, Default: 0x0000

Register Name	Addr (Hex)	Bit	Name	Function	Default Value
config20	0x14	15	sifdac_ena	When asserted the DAC output is set to the value in sifdac. This can be used for trim setting and other static tests.	0
		14	reserved	reserved	0
		13:0	sifdac	This is the value that is sent to the DACs when sifdac_ena is asserted.	0x0000

7.6.22 Register Name: config21– Address: 0x15, Default: 0xFFFF
Table 28. Register Name: config21– Address: 0x15, Default: 0xFFFF

Register Name	Addr (Hex)	Bit	Name	Function	Default Value
config21	0x15	15:0	sleepcntl	<p>This controls what blocks get sent a SLEEP signal when the PAD_SLEEP pin is asserted. Programming a '1' in a bit will pass the SLEEP signal to the appropriate block.</p> <p>bit15 = DAC A bit14 = DAC B bit13 = FUSE Sleep bit12 = Temperature Sensor bit11 = Clock Receiver bit10 = LVDS DATA Receivers bit9 = LVDS SYNC Receiver bit8 = PECL ALIGN Receiver bit7 = LVDS DATACLK Receiver bit6 = reserved bit5 = reserved bit4 = reserved bit3 = reserved bit2 = reserved bit1 = reserved bit0 = reserved</p>	0xFFFF

7.6.23 Register Name: config22– Address: 0x16, Default: 0x0000
Table 29. Register Name: config22– Address: 0x16, Default: 0x0000

Register Name	Addr (Hex)	Bit	Name	Function	Default Value
config22 READ ONLY	0x16	15:0	fa002_data(15:0)	Lower 16 bits of the DIE ID word	

DAC3151, DAC3161, DAC3171

ZHCSBF0D –AUGUST 2013–REVISED FEBRUARY 2018

www.ti.com.cn
7.6.24 Register Name: config23– Address: 0x17, Default: 0x0000
Table 30. Register Name: config23– Address: 0x17, Default: 0x0000

Register Name	Addr (Hex)	Bit	Name	Function	Default Value
config23 READ ONLY	0x17	15:0	fa002_ data(31:16)	Lower middle 16 bits of the DIE ID word	

7.6.25 Register Name: config24– Address: 0x18, Default: 0x0000
Table 31. Register Name: config24– Address: 0x18, Default: 0x0000

Register Name	Addr (Hex)	Bit	Name	Function	Default Value
config24 READ ONLY	0x18	15:0	fa002_ data(47:32)	Upper middle 16 bits of the DIE ID word	

7.6.26 Register Name: config25– Address: 0x19, Default: 0x0000
Table 32. Register Name: config25– Address: 0x19, Default: 0x0000

Register Name	Addr (Hex)	Bit	Name	Function	Default Value
config25 READ ONLY	0x19	15:0	fa002_ data(63:48)	Upper 16 bits of the DIE ID word	

7.6.27 Register Name: config127– Address: 0x7F, Default: 0x0045
Table 33. Register Name: config127– Address: 0x7F, Default: 0x0045

Register Name	Addr (Hex)	Bit	Name	Function	Default Value
config127 READ ONLY/No RESET Value	0x7F	15:14	reserved	reserved	00
		13:12	reserved	reserved	00
		11:10	reserved	reserved	00
		9:8	reserved	reserved	00
		7	reserved	reserved	0
		6	titest_voh	A fixed 1 that can be used to test the V _{OH} at the SIF output.	1
		5	titest_vol	A fixed 0 that can be used to test the V _{OL} at the SIF output.	0
		4:3	vendorid	Fixed at 01.	01
2:0	versionid	Chip version	001		

8 Application and Implementation

NOTE

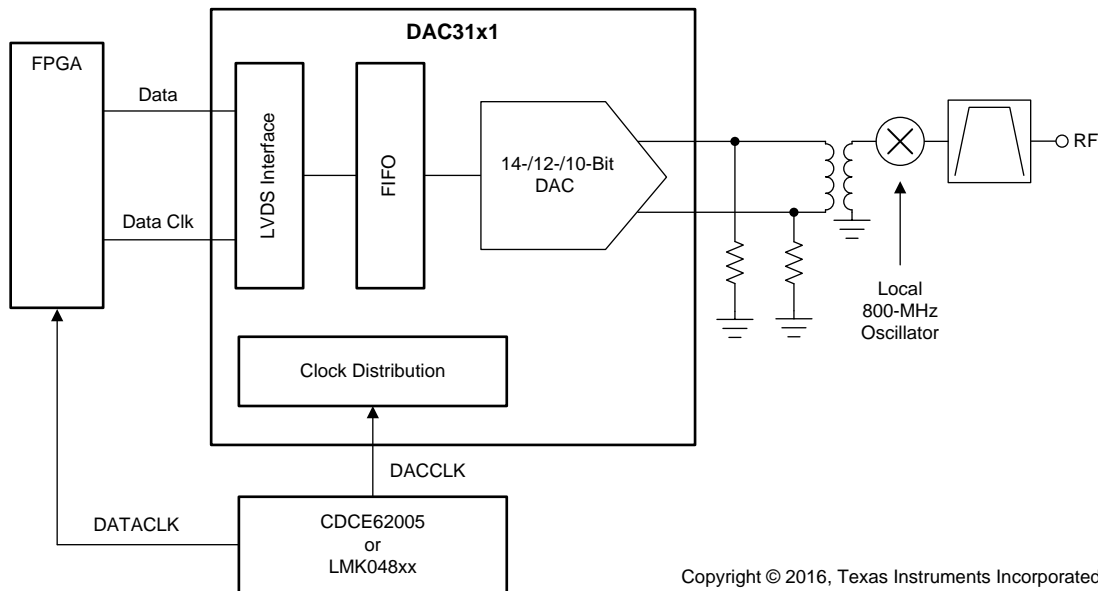
Information in the following applications sections is not part of the TI component specification, and TI does not warrant its accuracy or completeness. TI's customers are responsible for determining suitability of components for their purposes. Customers should validate and test their design implementation to confirm system functionality.

8.1 Application Information

The DAC3171 is a single-channel, 14-bit, 500-MSPS DAC with a flexible input interface (full SDR 14-bit interface or DDR 7-bit interface). This device supports an independent input data clock and output DAC clock, and the FIFO can be used to absorb the timing difference of two clock domains. The DAC3171 has a wide use in many applications, such as real-IF transmitters for wireless infrastructure, arbitrary waveform generators, radar, cable head-end equipment, and more.

8.2 Typical Application

Figure 72 shows an example block diagram of the DAC31x1 used as a real IF transmitter to generate a modulated communication signal.



Copyright © 2016, Texas Instruments Incorporated

Figure 72. Real IF Transmitter

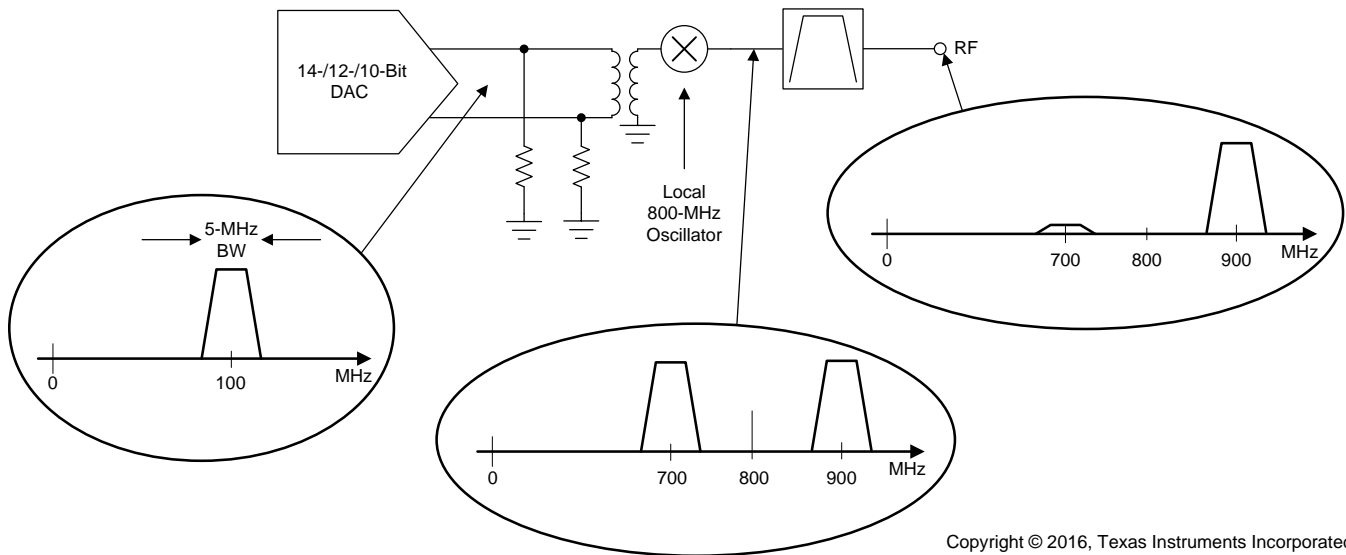
8.2.1 Design Requirements

A single-carrier WCDMA modulated waveform with a bandwidth of 5 MHz is to be created. The WCDMA signal is to be modulated up to a 900-MHz carrier. A real mixer will create two images of the signal about the carrier frequency and some bleedthrough of the local oscillator; therefore, a band-pass filter will be used to filter out the undesired image of the signal and the local oscillator.

Typical Application (continued)

8.2.2 Detailed Design Procedure

The data pattern file that represents the desired 5-MHz, single-carrier WCDMA signal is created with a pattern generation is clocked into the DAC31x1 by an FPGA as shown in the [Figure 72](#). We choose to generate the data pattern file with the 5-MHz WCDMA signal centered at an intermediate frequency of 100 MHz and use a local oscillator of 800 MHz to upconvert the modulated signal to 900 MHz. The real mixer will create an image of the desired signal centered about 700 MHz, and there will also be local oscillator (LO) feedthrough observed at 800 MHz. A band-pass filter that follows the mixer is needed to remove the lower image of the signal and the local oscillator feedthrough, as shown in [Figure 73](#).



Copyright © 2016, Texas Instruments Incorporated

Figure 73. Signal Spectrum in a Real IF Transmitter

The choice of the intermediate frequency has an impact on the design of the 900-MHz band-pass filter. The band-pass filter is to pass the WCDMA signal image that is centered at 900 MHz, but provide significant attenuation of the local oscillator feedthrough and the signal image. The distance between the signal and the image is equal to twice the intermediate frequency. If the intermediate frequency is too low, the image gets too close to the signal, then a higher order band pass filter with steep roll-off is required. If the intermediate frequency is too high, the image would be further away from the signal, but the signal would be too far out towards the end of the Nyquist zone, and the SinX/X distortion would become an issue. Centering the DAC output signal at an intermediate frequency of 100 MHz is a good and balanced choice in this example, making the design of the band-pass filter reasonably easy.

The DAC31x1 does not have an interpolation option, so the data rate for the sample data will be the same rate as the sample rate to the DAC31x1. In this case, we choose a sample rate of 500 MSPS, the maximum sample rate for this device.

Typical Application (continued)

8.2.3 Application Curve

The DAC output ACPR of a single-carrier, WCDMA modulated signal centered at an intermediate frequency of 100 MHz is shown in Figure 74.

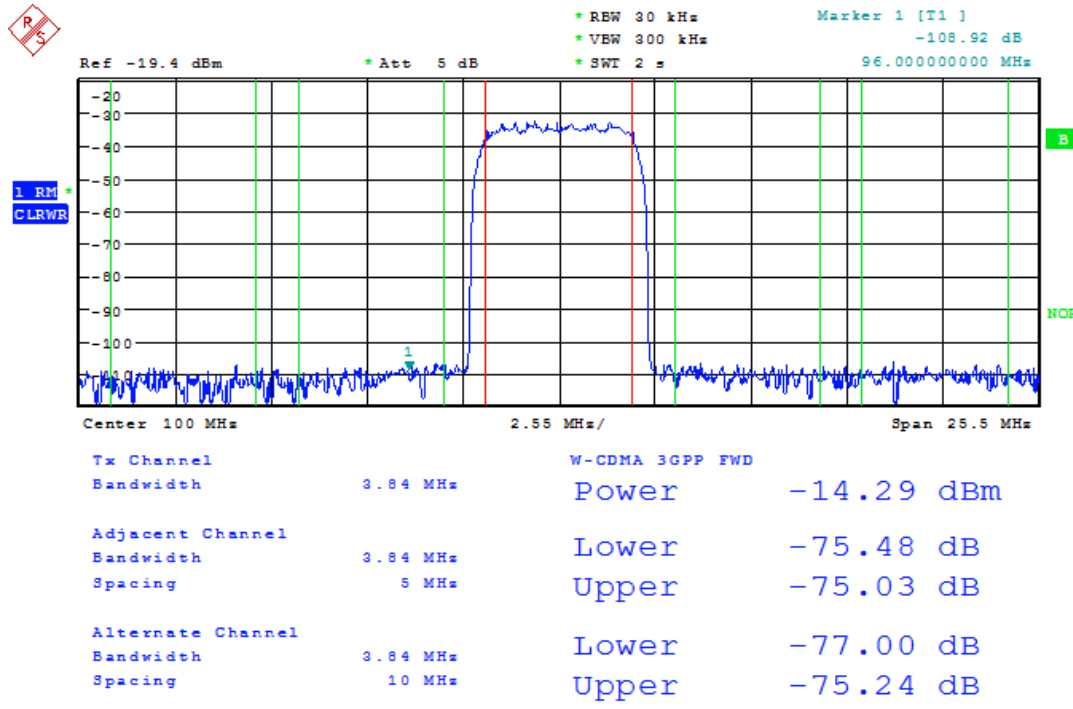


Figure 74. One Carrier WCDMA Signal ACPR at 100 MHz

9 Power Supply Recommendations

The DAC31x1 uses three different power supply voltages. Some of the DAC power supplies are noise sensitive. The table below is a summary of the various power supply of the DAC. See the evaluation module schematics for an example power supply implementation. Make certain to keep clean power-supply routing away from noisy digital supplies. Avoid placing digital supplies and clean supplies on adjacent board layers and use a ground layer between noisy and clean supplies if possible. All supplies pins should be decoupled as close to the pins as possible using small-value capacitors, with larger bulk capacitors placed further away.

Table 34. Power Supply Recommendations

POWER SUPPLY	VOLTAGE	NOISE SENSITIVE	RECOMMENDATION
IOVDD	1.8 V to 3.3 V	No	Digital supply, keep separated from noise sensitive supplies.
CLKVDD18	1.8 V ($f_{DAC} \leq 500$ MSPS) 2.1 V	Yes	Provide clean voltage, avoid spurious noise
DIGVDD18	1.8 V ($f_{DAC} \leq 500$ MSPS) 2.1 V	No	Digital supply, keep separated from noise sensitive supplies.
VDDA18	1.8 V ($f_{DAC} \leq 500$ MSPS) 2.1 V	Yes	Provide clean voltage, avoid spurious noise
VDDA33	3.3 V	Yes	Provide clean voltage, avoid spurious noise
VFUSE	1.8 V ($f_{DAC} \leq 500$ MSPS) 2.1 V	No	Digital supply, connect to DIGVDD18

10 Layout

10.1 Layout Guidelines

- Place DAC output termination resistors as close to the output pins as possible in order to provide a dc path to ground and set the source impedance.
- Route the LVDS data signals as impedance-controlled, tightly-coupled, matched-length differential traces.
- Maintain a solid ground plane under the LVDS signals without any ground plane splits.
- Place a thermal ground pad under the device with adequate number of vias to the ground planes of the board.

10.2 Layout Example

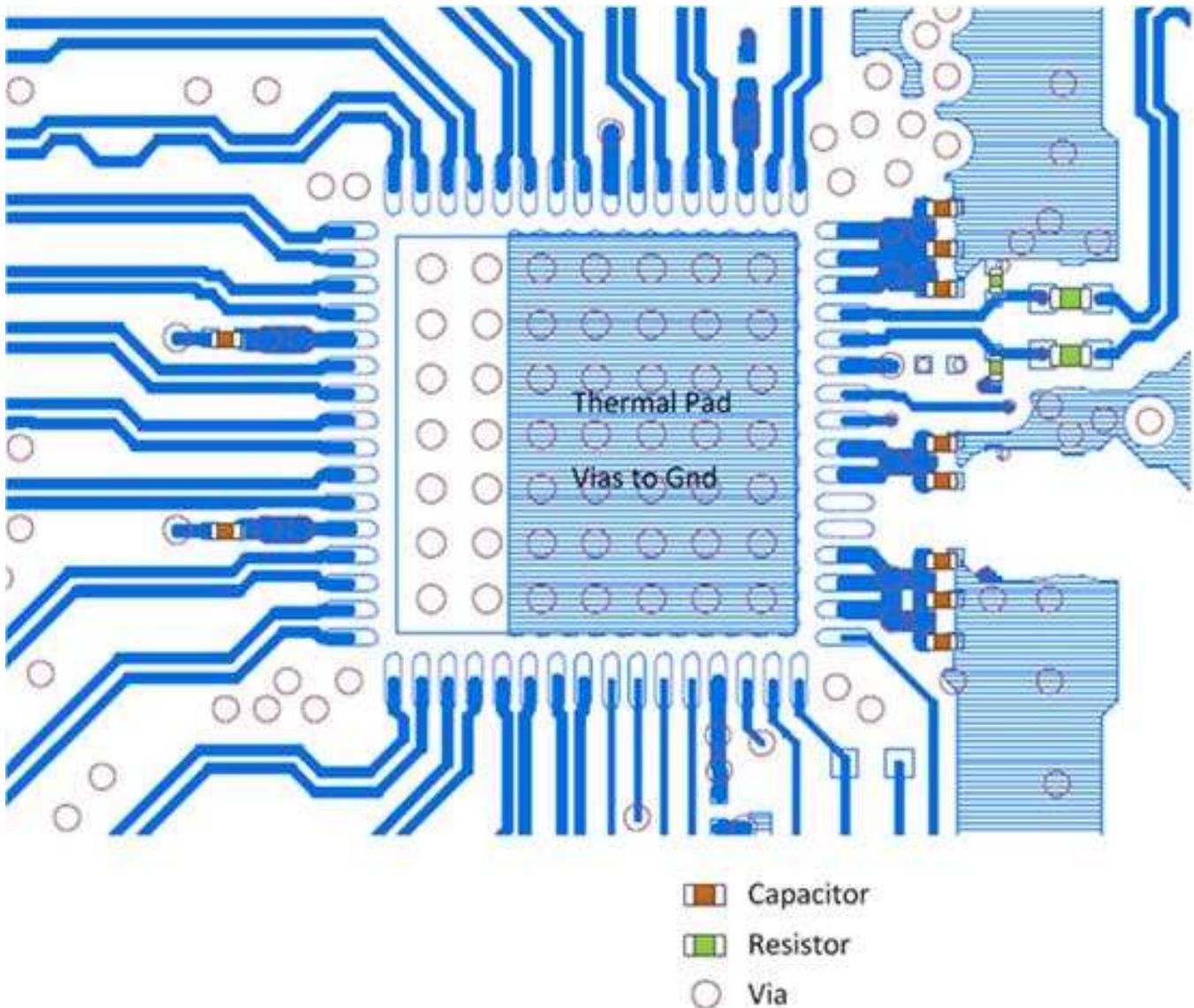


Figure 75. DAC31x1 Layout Example

11 器件和文档支持

11.1 器件支持

11.1.1 技术参数定义

邻载波泄漏比 (ACLR): 定义为相邻两通道的测量功率之比 (以相对于载波的分贝数 (dBc) 为单位)。

模拟和数字电源抑制比 (APSSR 和 DPSSR): 定义为 IOOUT 变化量与相对于 IOOUT 电流理想值标准化的电源电压变化量之比的百分比误差。

差分非线性 (DNL): 定义为数字输入编码变化 1 LSB (理想值) 时对应的模拟输出变化。

增益漂移: 定义为环境温度 (25°C) 下的增益值与整个工作温度范围内的增益值之间的最大变化量 (以 ppm/°C 为单位, 相对于满量程范围 (FSR))。

增益误差: 定义为测得的满量程输出电流与理想的满量程输出电流之比的百分比误差 (FSR%)。

积分非线性 (INL): 定义为实际模拟输出与理想输出的最大偏差, 取决于在零与满量程刻度之间绘制的直线。

互调失真 (IMD3): 双频 IMD3 定义为三阶互调失真与任一基频输出之比 (以 dBc 为单位)。

偏移漂移: 定义为环境温度 (25°C) 下的直流偏移值与整个工作温度范围内的直流偏移值之间的最大变化量 (以 ppm/°C 为单位, 相对于满量程范围 (FSR))。

偏移误差: 定义为测得的中档输出电流与理想的中档输出电流之比的百分比误差 (FSR%)。

输出合规范围: 定义为电流输出 DAC 的输出端允许的最低电压和最高电压。超出此限制范围可能导致器件可靠性降低, 或者对失真性能产生不利影响。

基准电压漂移: 定义为环境温度 (25°C) 下的基准电压值与整个工作温度环境范围内的基准电压值之间的最大变化量 (以 ppm/°C 为单位)。

无杂散动态范围 (SFDR): 定义为输出信号的峰值与峰值杂散信号之差 (以 dBc 为单位)。

信噪比 (SNR): 定义为基频输出信号的 RMS 值与奈奎斯特频率下其他所有频谱分量 (包括噪声, 但不包括前六个谐波和直流分量) 总和的 RMS 值之比。

11.2 相关链接

表 35 列出了快速访问链接。类别包括技术文档、支持和社区资源、工具和软件以及申请样片或购买产品的快速访问链接。

表 35. 相关链接

器件	产品文件夹	样片与购买	技术文档	工具和软件	支持和社区
DAC3151	请单击此处	请单击此处	请单击此处	请单击此处	请单击此处
DAC3161	请单击此处	请单击此处	请单击此处	请单击此处	请单击此处
DAC3171	请单击此处	请单击此处	请单击此处	请单击此处	请单击此处

11.3 接收文档更新通知

要接收文档更新通知, 请导航至 TI.com 上的器件产品文件夹。请单击右上角的 **提醒我** 进行注册, 即可每周接收产品信息更改摘要。有关更改的详细信息, 请查看任何已修订文档中包含的修订历史记录。

11.4 社区资源

下列链接提供到 TI 社区资源的连接。链接的内容由各个分销商“按照原样”提供。这些内容并不构成 TI 技术规范, 并且不一定反映 TI 的观点; 请参阅 TI 的 [《使用条款》](#)。

TI E2E™ 在线社区 **TI 的工程师对工程师 (E2E) 社区。** 此社区的创建目的在于促进工程师之间的协作。在 e2e.ti.com 中, 您可以咨询问题、分享知识、拓展思路并与同行工程师一道帮助解决问题。

设计支持 **TI 参考设计支持** 可帮助您快速查找有帮助的 E2E 论坛、设计支持工具以及技术支持的联系信息。

11.5 商标

E2E is a trademark of Texas Instruments.

11.5 商标 (接下页)

All other trademarks are the property of their respective owners.

11.6 静电放电警告



ESD 可能会损坏该集成电路。德州仪器 (TI) 建议通过适当的预防措施处理所有集成电路。如果不遵守正确的处理措施和安装程序，可能会损坏集成电路。

ESD 的损坏小至导致微小的性能降级，大至整个器件故障。精密的集成电路可能更容易受到损坏，这是因为非常细微的参数更改都可能会导致器件与其发布的规格不相符。

11.7 Glossary

[SLYZ022](#) — *TI Glossary*.

This glossary lists and explains terms, acronyms, and definitions.

12 机械、封装和可订购信息

以下页面包含机械、封装和可订购信息。这些信息是指定器件的最新可用数据。数据如有变更，恕不另行通知和修订此文档。如欲获取此数据表的浏览器版本，请参阅左侧的导航。

PACKAGING INFORMATION

Orderable Device	Status (1)	Package Type	Package Drawing	Pins	Package Qty	Eco Plan (2)	Lead finish/ Ball material (6)	MSL Peak Temp (3)	Op Temp (°C)	Device Marking (4/5)	Samples
DAC3151IRGCR	ACTIVE	VQFN	RGC	64	2000	RoHS & Green	NIPDAU	Level-3-260C-168 HR	-40 to 85	DAC3151I	Samples
DAC3151IRGCT	ACTIVE	VQFN	RGC	64	250	RoHS & Green	NIPDAU	Level-3-260C-168 HR	-40 to 85	DAC3151I	Samples
DAC3161IRGCR	ACTIVE	VQFN	RGC	64	2000	RoHS & Green	NIPDAU	Level-3-260C-168 HR	-40 to 85	DAC3161I	Samples
DAC3161IRGCT	ACTIVE	VQFN	RGC	64	250	RoHS & Green	NIPDAU	Level-3-260C-168 HR	-40 to 85	DAC3161I	Samples
DAC3171IRGCR	ACTIVE	VQFN	RGC	64	2000	RoHS & Green	NIPDAU	Level-3-260C-168 HR	-40 to 85	DAC3171I	Samples
DAC3171IRGCT	ACTIVE	VQFN	RGC	64	250	RoHS & Green	NIPDAU	Level-3-260C-168 HR	-40 to 85	DAC3171I	Samples

(1) The marketing status values are defined as follows:

ACTIVE: Product device recommended for new designs.

LIFEBUY: TI has announced that the device will be discontinued, and a lifetime-buy period is in effect.

NRND: Not recommended for new designs. Device is in production to support existing customers, but TI does not recommend using this part in a new design.

PREVIEW: Device has been announced but is not in production. Samples may or may not be available.

OBSOLETE: TI has discontinued the production of the device.

(2) **RoHS:** TI defines "RoHS" to mean semiconductor products that are compliant with the current EU RoHS requirements for all 10 RoHS substances, including the requirement that RoHS substance do not exceed 0.1% by weight in homogeneous materials. Where designed to be soldered at high temperatures, "RoHS" products are suitable for use in specified lead-free processes. TI may reference these types of products as "Pb-Free".

RoHS Exempt: TI defines "RoHS Exempt" to mean products that contain lead but are compliant with EU RoHS pursuant to a specific EU RoHS exemption.

Green: TI defines "Green" to mean the content of Chlorine (Cl) and Bromine (Br) based flame retardants meet JS709B low halogen requirements of <=1000ppm threshold. Antimony trioxide based flame retardants must also meet the <=1000ppm threshold requirement.

(3) MSL, Peak Temp. - The Moisture Sensitivity Level rating according to the JEDEC industry standard classifications, and peak solder temperature.

(4) There may be additional marking, which relates to the logo, the lot trace code information, or the environmental category on the device.

(5) Multiple Device Markings will be inside parentheses. Only one Device Marking contained in parentheses and separated by a "~" will appear on a device. If a line is indented then it is a continuation of the previous line and the two combined represent the entire Device Marking for that device.

(6) Lead finish/Ball material - Orderable Devices may have multiple material finish options. Finish options are separated by a vertical ruled line. Lead finish/Ball material values may wrap to two lines if the finish value exceeds the maximum column width.

Important Information and Disclaimer: The information provided on this page represents TI's knowledge and belief as of the date that it is provided. TI bases its knowledge and belief on information provided by third parties, and makes no representation or warranty as to the accuracy of such information. Efforts are underway to better integrate information from third parties. TI has taken and continues to take reasonable steps to provide representative and accurate information but may not have conducted destructive testing or chemical analysis on incoming materials and chemicals. TI and TI suppliers consider certain information to be proprietary, and thus CAS numbers and other limited information may not be available for release.

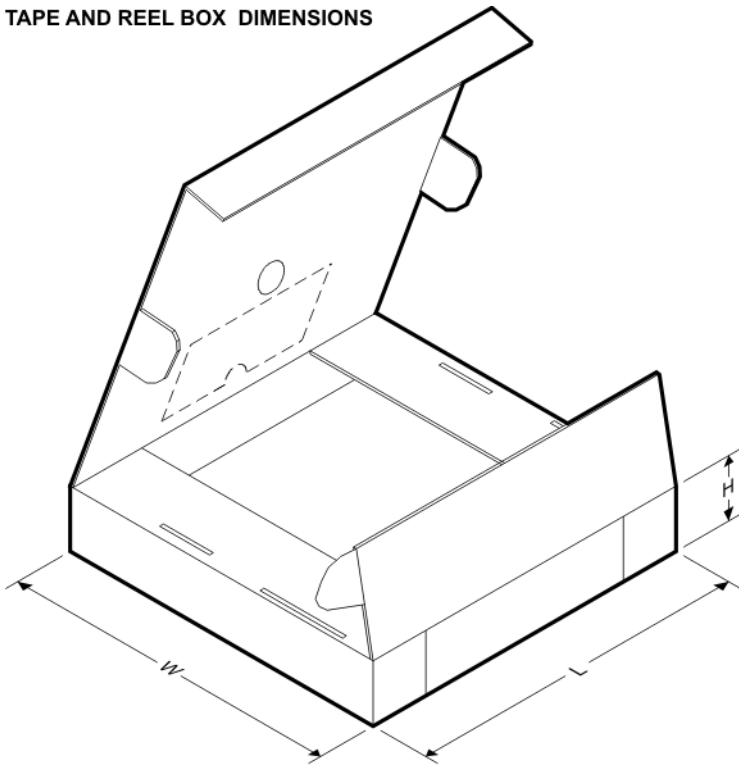
In no event shall TI's liability arising out of such information exceed the total purchase price of the TI part(s) at issue in this document sold by TI to Customer on an annual basis.

TAPE AND REEL INFORMATION

QUADRANT ASSIGNMENTS FOR PIN 1 ORIENTATION IN TAPE


*All dimensions are nominal

Device	Package Type	Package Drawing	Pins	SPQ	Reel Diameter (mm)	Reel Width W1 (mm)	A0 (mm)	B0 (mm)	K0 (mm)	P1 (mm)	W (mm)	Pin1 Quadrant
DAC3151IRGCR	VQFN	RGC	64	2000	330.0	16.4	9.3	9.3	1.5	12.0	16.0	Q2
DAC3151IRGCT	VQFN	RGC	64	250	330.0	16.4	9.3	9.3	1.5	12.0	16.0	Q2
DAC3161IRGCR	VQFN	RGC	64	2000	330.0	16.4	9.3	9.3	1.5	12.0	16.0	Q2
DAC3161IRGCT	VQFN	RGC	64	250	330.0	16.4	9.3	9.3	1.5	12.0	16.0	Q2
DAC3171IRGCR	VQFN	RGC	64	2000	330.0	16.4	9.3	9.3	1.5	12.0	16.0	Q2
DAC3171IRGCT	VQFN	RGC	64	250	330.0	16.4	9.3	9.3	1.5	12.0	16.0	Q2

TAPE AND REEL BOX DIMENSIONS


*All dimensions are nominal

Device	Package Type	Package Drawing	Pins	SPQ	Length (mm)	Width (mm)	Height (mm)
DAC3151IRGCR	VQFN	RGC	64	2000	336.6	336.6	28.6
DAC3151IRGCT	VQFN	RGC	64	250	367.0	367.0	38.0
DAC3161IRGCR	VQFN	RGC	64	2000	367.0	367.0	38.0
DAC3161IRGCT	VQFN	RGC	64	250	367.0	367.0	38.0
DAC3171IRGCR	VQFN	RGC	64	2000	336.6	336.6	28.6
DAC3171IRGCT	VQFN	RGC	64	250	367.0	367.0	38.0

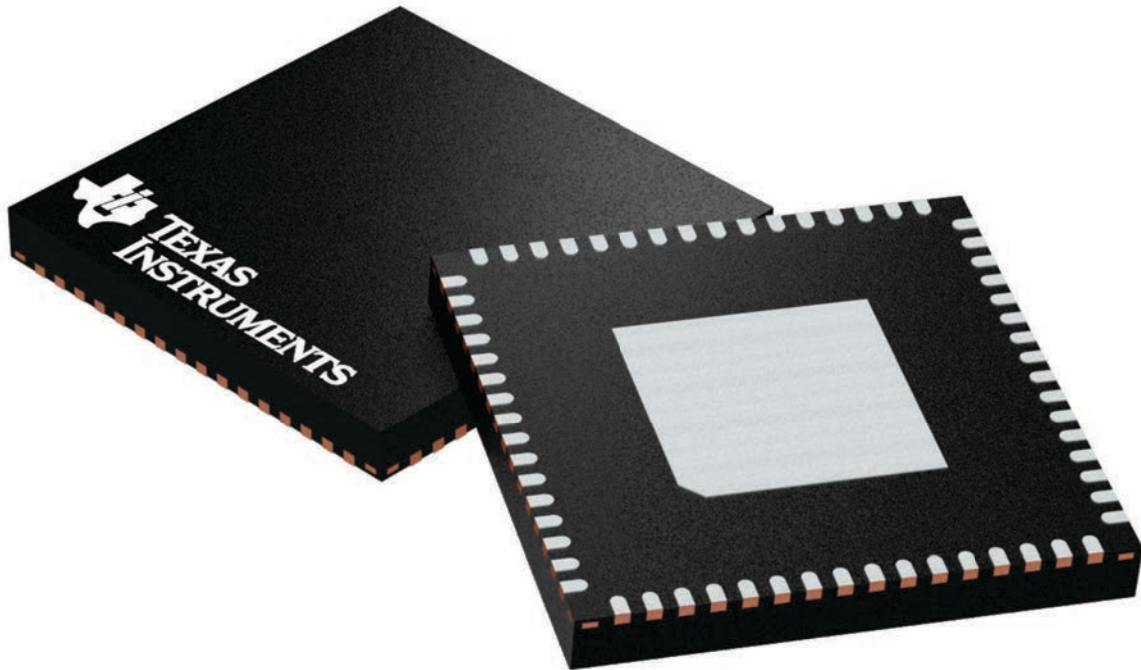
GENERIC PACKAGE VIEW

RGC 64

VQFN - 1 mm max height

9 x 9, 0.5 mm pitch

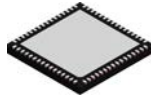
PLASTIC QUAD FLATPACK - NO LEAD



Images above are just a representation of the package family, actual package may vary.
Refer to the product data sheet for package details.

4224597/A

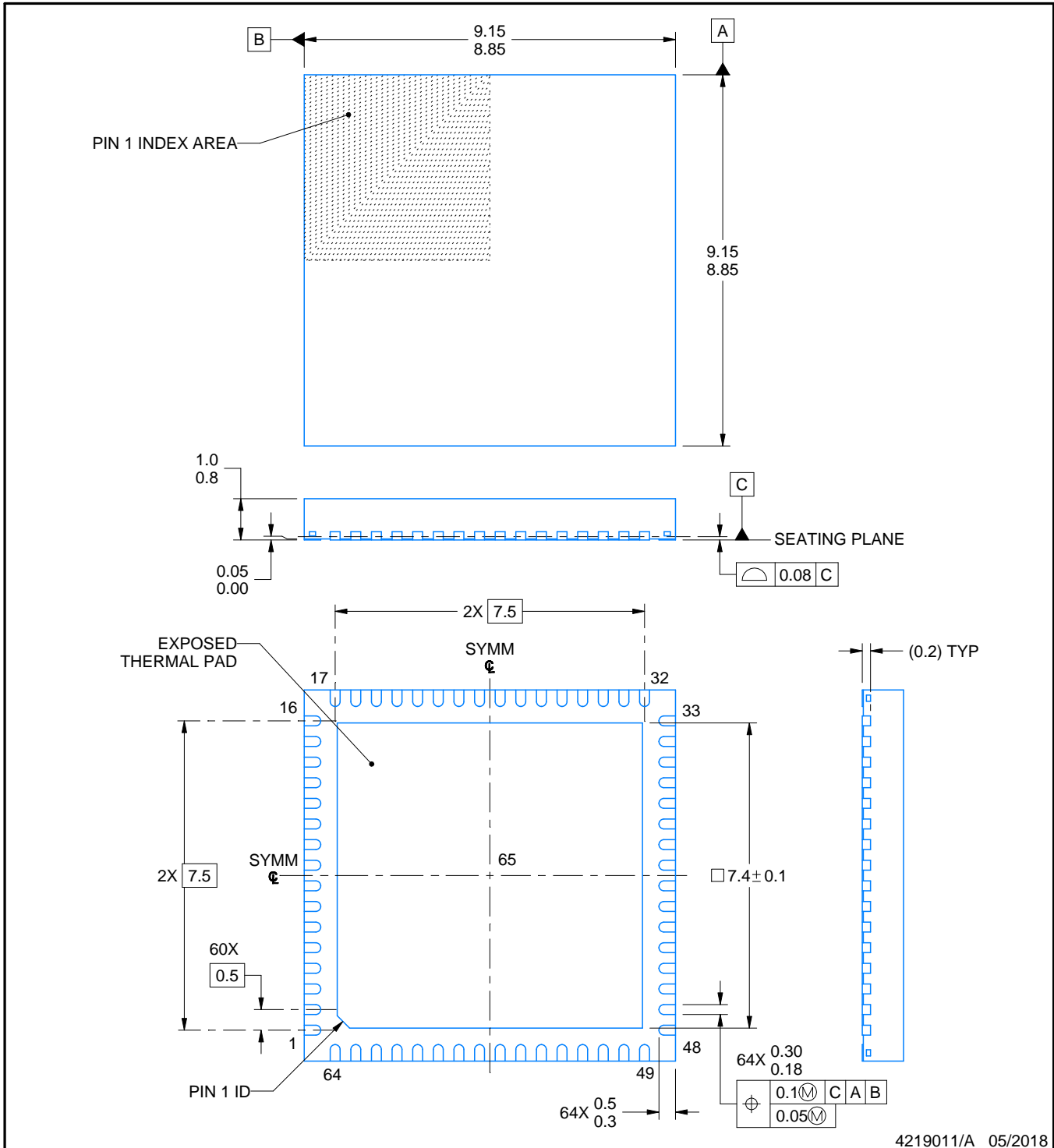
RGC0064H



PACKAGE OUTLINE

VQFN - 1 mm max height

PLASTIC QUAD FLATPACK - NO LEAD



NOTES:

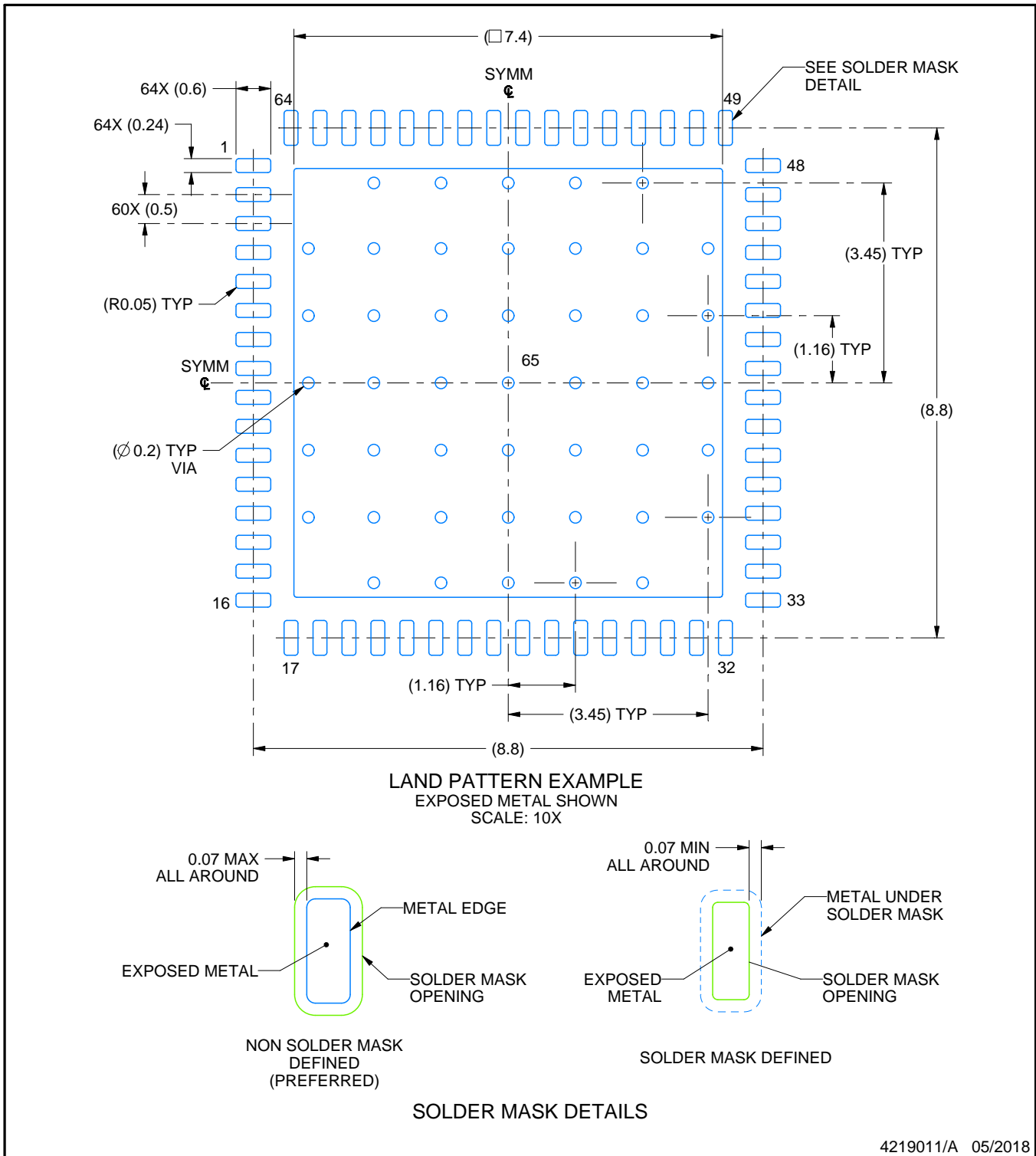
1. All linear dimensions are in millimeters. Any dimensions in parenthesis are for reference only. Dimensioning and tolerancing per ASME Y14.5M.
2. This drawing is subject to change without notice.
3. The package thermal pad must be soldered to the printed circuit board for thermal and mechanical performance.

EXAMPLE BOARD LAYOUT

RGC0064H

VQFN - 1 mm max height

PLASTIC QUAD FLATPACK - NO LEAD



NOTES: (continued)

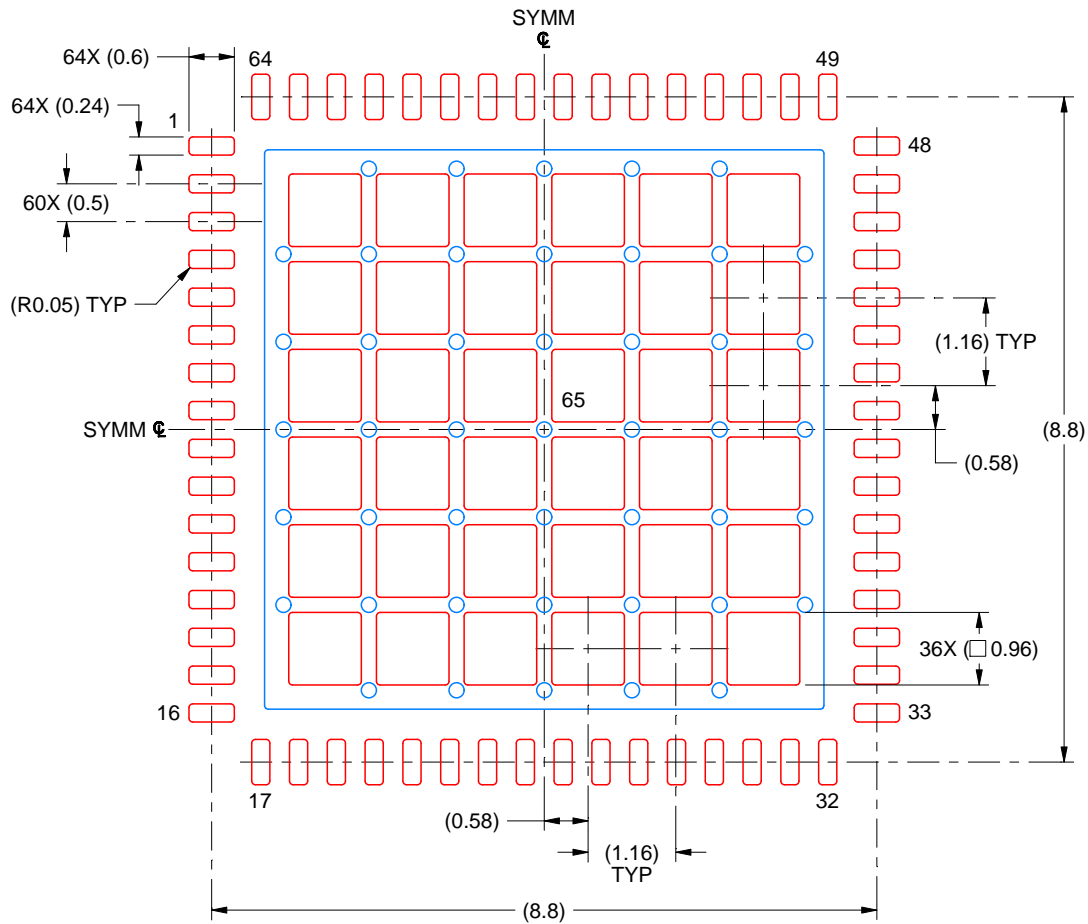
4. This package is designed to be soldered to a thermal pad on the board. For more information, see Texas Instruments literature number SLUA271 (www.ti.com/lit/sluea271).
5. Vias are optional depending on application, refer to device data sheet. If any vias are implemented, refer to their locations shown on this view. It is recommended that vias under paste be filled, plugged or tented.

EXAMPLE STENCIL DESIGN

RGC0064H

VQFN - 1 mm max height

PLASTIC QUAD FLATPACK - NO LEAD



SOLDER PASTE EXAMPLE
 BASED ON 0.125 MM THICK STENCIL
 SCALE: 10X

EXPOSED PAD 65
 61% PRINTED SOLDER COVERAGE BY AREA UNDER PACKAGE

4219011/A 05/2018

NOTES: (continued)

6. Laser cutting apertures with trapezoidal walls and rounded corners may offer better paste release. IPC-7525 may have alternate design recommendations.

重要声明和免责声明

TI 均以“原样”提供技术性 & 可靠性数据（包括数据表）、设计资源（包括参考设计）、应用或其他设计建议、网络工具、安全信息和其他资源，不保证其中不含任何瑕疵，且不做任何明示或暗示的担保，包括但不限于对适销性、适合某特定用途或不侵犯任何第三方知识产权的暗示担保。

所述资源可供专业开发人员应用 TI 产品进行设计使用。您将对以下行为独自承担全部责任：(1) 针对您的应用选择合适的 TI 产品；(2) 设计、验证并测试您的应用；(3) 确保您的应用满足相应标准以及任何其他安全、安保或其他要求。所述资源如有变更，恕不另行通知。TI 对您使用所述资源的授权仅限于开发资源所涉及 TI 产品的相关应用。除此之外不得复制或展示所述资源，也不提供其它 TI 或任何第三方的知识产权授权许可。如因使用所述资源而产生任何索赔、赔偿、成本、损失及债务等，TI 对此概不负责，并且您须赔偿由此对 TI 及其代表造成的损害。

TI 所提供产品均受 TI 的销售条款 (<http://www.ti.com.cn/zh-cn/legal/termsofsale.html>) 以及 [ti.com.cn](http://www.ti.com.cn) 上或随附 TI 产品提供的其他可适用条款的约束。TI 提供所述资源并不扩展或以其他方式更改 TI 针对 TI 产品所发布的可适用的担保范围或担保免责声明。

邮寄地址：上海市浦东新区世纪大道 1568 号中建大厦 32 楼，邮政编码：200122

Copyright © 2020 德州仪器半导体技术（上海）有限公司